

FOR SALE

NINGALOO OCEANFRONT | CORAL BAY'S BEST HOME AND LOCATION | TWO HOMES ON ONE BLOCK!

THE LOCATION

An absolute ocean front home (with no road between), and tranquil bay views over the Ningaloo Reef.

Coral Bay is the only place you can own property on The Ningaloo Reef and on the Western side (sunset coast) of the North-West Cape! With the townsite only recently converted to freehold titles, Coral Bay now offers an exciting

A unique holiday property in a blue-chip rural coastal location fronted by the Ningaloo Reef Marine Park and backed by the great Western Australian red-earth outback, this destination has much to attract visitors. The Coral Bay property offers expansive ocean views, a short walk to the beach and the tranquil waters of the bay, easy access to ocean fishing, plus a host of activities and facilities associated with a small coastal resort situated within metres of the coral waters of the Ningaloo Reef Marine Park.

<https://www.dropbox.com/s/5d2pr7dt4edu83z/22%20Video.mp4?dl=0>

THE HOME

An absolute ocean front home (with no road between)
Tranquil bay views over the Ningaloo Reef
Two rentable homes
Cul de sac location
Huge undercroft garaging for all of the toys!
Positive cash flow opportunity*
A holiday home but more like a business!

This unique property comprises two independent houses on a single 675m2 block, one of the largest blocks in the 26 block settlement. Both houses include living rooms, kitchens, bathrooms,

5 BED | 2 BATH | 0 CAR

PRICE:

Shore | By Negotiation UNDER OFFER

OPEN FOR INSPECTION:

N/A

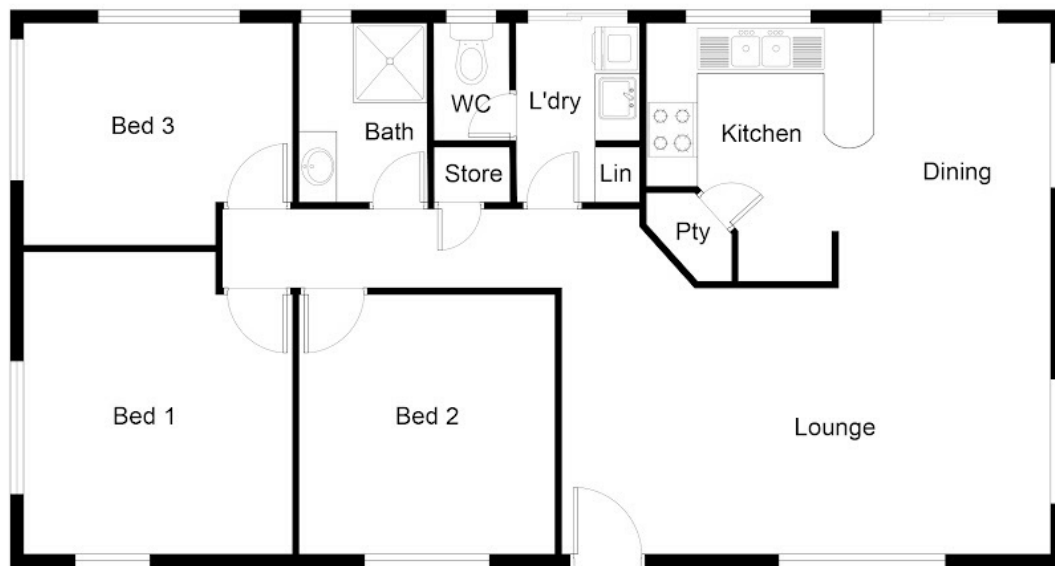


Scott Swingler

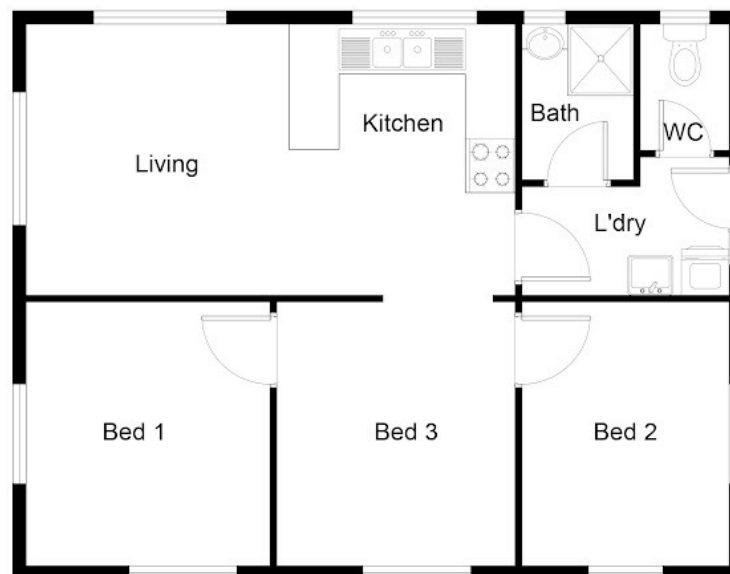
0403344649

scott@shore-property.com.au

Shore Property



UPPER HOUSE



LOWER HOUSE

Disclaimer: Please note this floor plan is for marketing purposes and is to be used as a guide only. All dimensions are estimates only and may not be exact measurements.

All enquiries must be directed to the agent, vendor or party representing this floor plan.

22 Wahoo Court, Coral Bay

Scott Swingler
0403344649

scott@shore-property.com.au
Shore Property