



SOLD

UNDER CONTRACT!

This magnificent property in Logan Reserve is the perfect combination of privacy and open space, with quality and comfort in mind, this home is positioned on a corner block and offers a great outdoor space and privacy.

Set on 450 sqmm² corner block this four-bedroom, two-bathroom residence is well appointed. The fresh interior is modern and bright with quality fixtures and attention to detail throughout. All four bedrooms have built-in robes and the main bathroom has a separate bathtub, plenty of vanity storage and a separate toilet. You'll love the spacious master bedroom with an additional walk-in robe and ensuite with a double vanity that makes getting ready a breeze.

Enjoyment:

This is not another ordinary house. As soon as you enter via the front security door the open plan living area greets you. Open plan living maximizes the use of available space making this layout perfect for entertaining

Three more bedrooms share the main bathroom in a separate wing of the home, and laundry facilities are conveniently located in the double lock-up garage with an internal shopper's entry.

Located in a family-friendly street you'll be conveniently close to child care, parks, sporting facilities and walking distance to schools

Future:

- * solar panel system
- * Tidy home and
- * Expansive open-plan living flowing onto a lovely covered alfresco patio
- * Quality modern kitchen with breakfast bar and double pantry
- * Master bedroom with walk-in robe and immaculate private ensuite
- * Built-in robes to good-sized second, third and fourth bedrooms
- * Family-sized main bathroom with bath, shower and separate toilet
- * Split-system air conditioning and ceiling fans throughout ensure your comfort

For inspection please contact Ashraf Payman on 0469385846

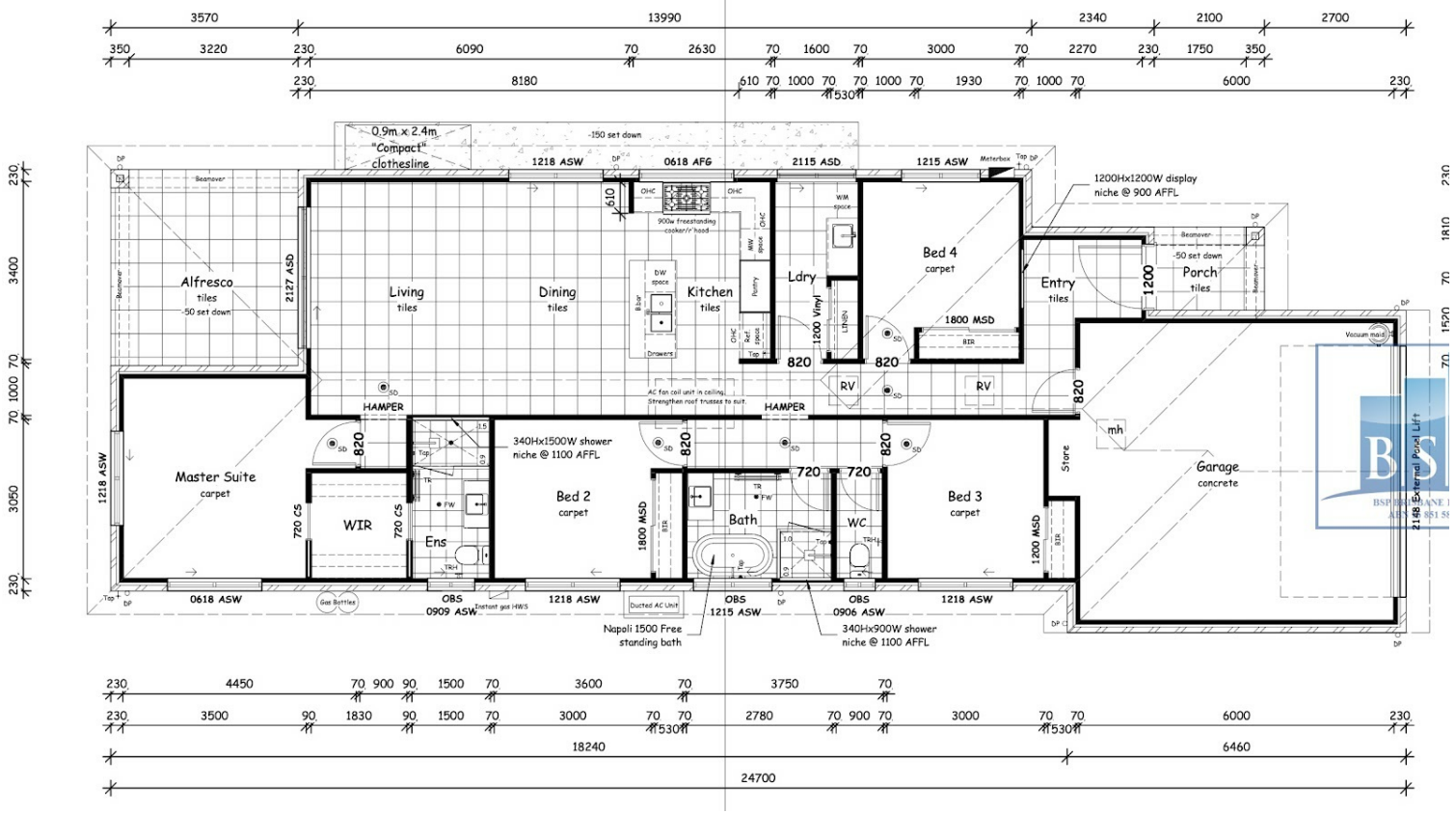
4 BED | 2 BATH | 2 CAR

PRICE:
\$580,000

OPEN FOR INSPECTION:
N/A



Ash Payman
0469385846
ash@atrealty.com.au
www.atrealty.com.au



Disclaimer: Please note this floor plan is for marketing purposes and is to be used as a guide only. All dimensions are estimates only and may not be exact measurements.

Ash Payman
 0469385846
 ash@atrealty.com.au
 www.atrealty.com.au

