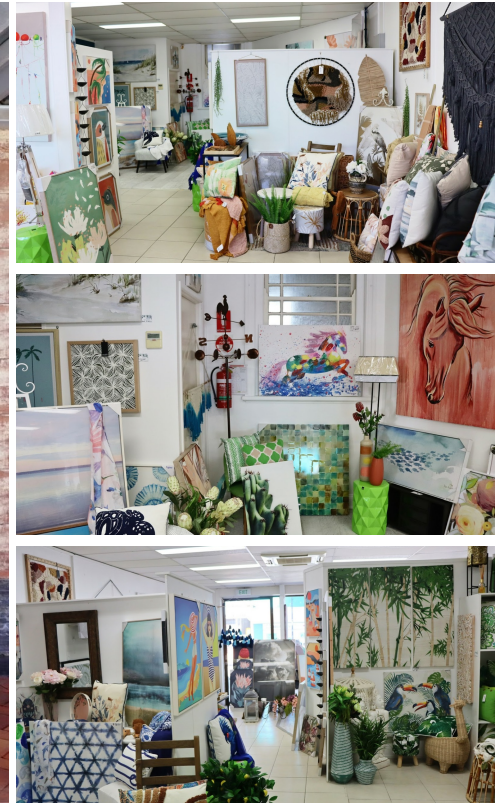


ADDRESS UPON REQUEST



FOR LEASE

PRIME RETAIL POSITION

Establish or move your business to this prime Mary Street location. Flood free and surrounded by thriving retail and allied health businesses and opposite Australia Post.

Approximately 100m² in area with Mary Street frontage and disabled access. Large retail showroom which could be converted to professional offices, medical or allied health rooms or whatever suits your needs.

Toilet and sink plus a covered outdoor area, a private place to escape to. There is also an elevated deck shared with a neighbouring business. One carpark at the rear.

This rare opportunity is being offered at an affordable price. Contact me today to explore this opportunity.

0 BED | 0 BATH | 0 CAR

PRICE:

Price on Application

OPEN FOR INSPECTION:

N/A



Wayne and Christine Fewtrell

0408450856

christine@atrealty.com.au

www.fewtrellrealty.com