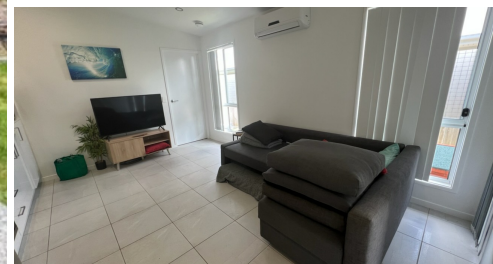


2/19 PRUDENCE PLACE, MERIDAN PLAINS, QLD, 4551



FOR LEASE

APPLICATION FORM TO BE SUBMITTED BEFORE
VIEWING APPROVED - MODERN LIFESTYLE
PERFECT LOCATION

GRAY Property Services would like to present this modern 2 bedroom, 1 bathroom Single garage home close to Meridan Plains and Talara schools. Break of Lease

WE DO NOT ACCEPT 1FORM APPLICATION

Features include:

- Open plan design
- Master bedroom built in robe and air conditioning
- 2nd bedroom with built ins and fans
- Modern kitchen open plan living
- Semi enclosed entertainment area
- Ceiling fans throughout
- Single lock-up garage with remote access
- Water efficient

Contact us today to arrange a viewing on 0407 411 644.

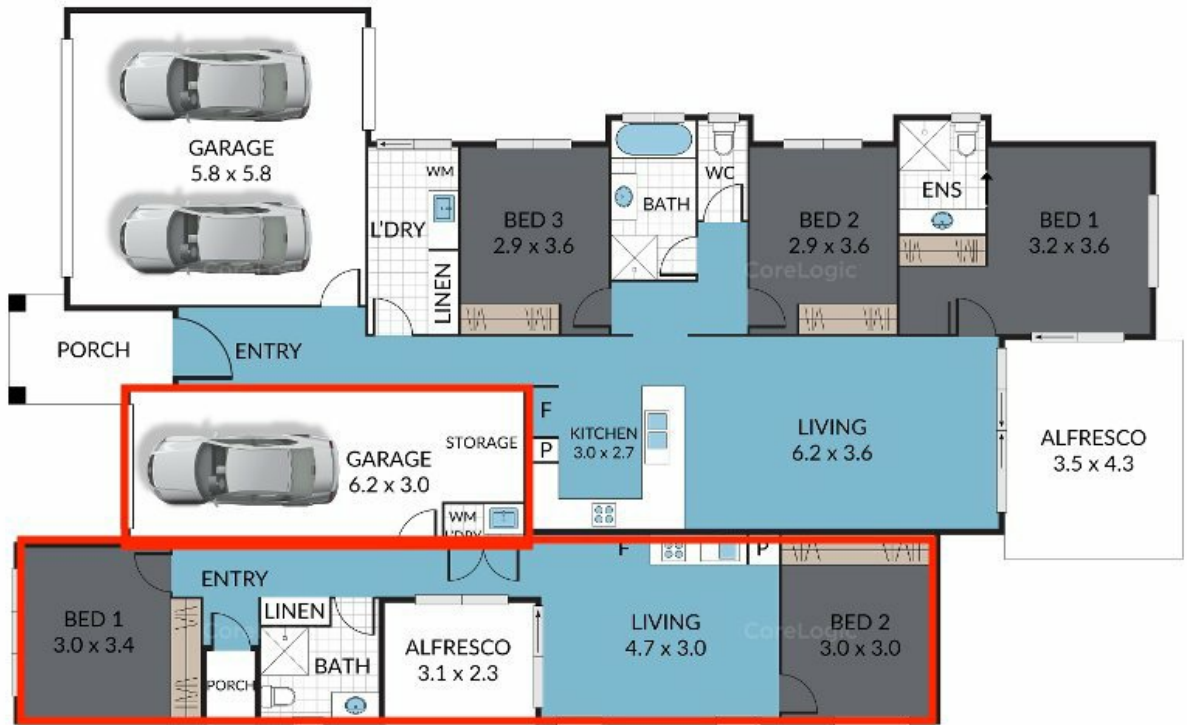
2 BED | 1 BATH | 1 CAR

PRICE:
\$525 per week

OPEN FOR INSPECTION:
N/A



Cassandra and Cameron Gray
0431316679
cgray@atrealty.com.au
www.atrealty.com.au



Disclaimer: Please note this floor plan is for marketing purposes and is to be used as a guide only. All dimensions are estimates only and may not be exact measurements.