



SOLD

STRIKING LUXE PRESENTATION IN COVETED FAMILY LOCATION

You're invited into a striking luxe living/dining with impressive raked ceilings, attractive 60cm tiles and seamless living zones. An eye-catching kitchen with island bench, porcelain tile splashback, 5 burner Fisher & Paykel gas stove, 900mm Elba oven, stainless steel Bosch dishwasher, and plumbed fridge space.

Ultimate tropical indoor-outdoor flow with bi-fold doors to the alfresco.

Generous master bedroom with garden aspects, very large walk-in wardrobe and double vanity ensuite. Additional three bedrooms, and large media room with storage cupboard.

Other features include split system air conditioning/fans/security screens throughout, double remote-control lock up garage plus additional storage area and Fronius Inverter 6.6kiloWatt solar system.

Double side access for a caravan/boat, space for a pool, established vege and flower planter boxes, passionfruit vines and lemon trees.

Located in a quiet family circuit, steps away from a welcoming park-bridge/walking/cycling track, reserve and Oakville Parade children's park. A short drive to Smithfield State High School, James Cook University and Smithfield Shopping Centre.

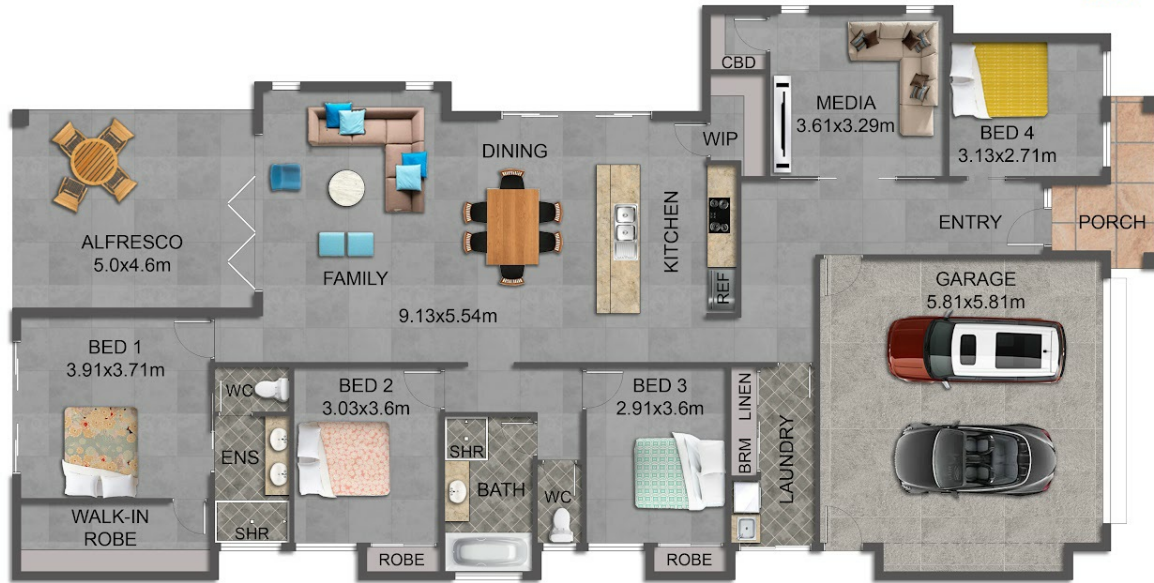
4 BED | 2 BATH | 2 CAR

PRICE:
\$670,000

OPEN FOR INSPECTION:
N/A



Zoe Wicks
0477114778
zoewicks@atrealty.com.au
www.atrealty.com.au



FLOOR PLAN

This floor plan including furniture, fixture measurements and dimensions are approximate and for illustrative purposes only. Zoe Wicks Real Estate guarantee, warranty or representation as to the accuracy and layout. All enquiries must be directed to the agent, vendor or party representing this floor plan.

9 Byerstown Link, Trinity Park

Disclaimer: Please note this floor plan is for marketing purposes and is to be used as a guide only. All dimensions are estimates only and may not be exact measurements.