

SOLD

STUNNING MODERN HOME WITH EXQUISITE FINISHES AND EXTRA FEATURES

HIGH QUALITY BUILD WITH THE FINEST MATERIALS

Only three years young, this luxurious family home is awaiting its new owners. Offering open plan living, this low maintenance home is flawless inside and out. Spacious and stylish, the home has a whole host of extra features and fittings, including: large butler's pantry, plumbed BBQ area, ducted Zoned Air Con, plantation shutters and CCTV security system and alarm.

The property's design and layout ensures peace and privacy and you can Relax in comfort and style in a home you can be proud of. Enjoy cooking in the gourmet kitchen, entertain friends with a BBQ in the large undercover terraced area or simply admire the beautiful chandelier!

Located not far from the Coast yet close to the amenities, the property is centrally located from Brisbane city and The Sunshine Coast. You can immerse yourself in the friendly community and there are plenty of Recreational spaces perfect for family picnics.

Fishing enthusiasts can collect the day's freshest catch at land-based fishing spots throughout the suburb and boaties can take advantage of the nearby North Pine River which extends into the vast Moreton Bay.

Features include:

- *Designer kitchen with 5 burner gas cook-top/oven, island with breakfast bench double sink & dishwasher.
- *Massive combined lounge, dining & kitchen tiled throughout with A/C, fans & triple panelled sliding & security screen doors
- *Multiple area, undercover outdoor terrace with built-in BBQ & easy maintenance gardens with premium synthetic turf.
- *King-size master bedroom with walk-in robe, en-suite with double shower & vanity & ducted A/C with fans
- *Bedrooms 2, 3 & 4 are all Queen-size with built-in robes, ducted A/C & fans
- *Full master bathroom with separate toilet & en-suite in main
- *Double automatic lock-up garage with access to side courtyard
- *solar panels for reduced power bills

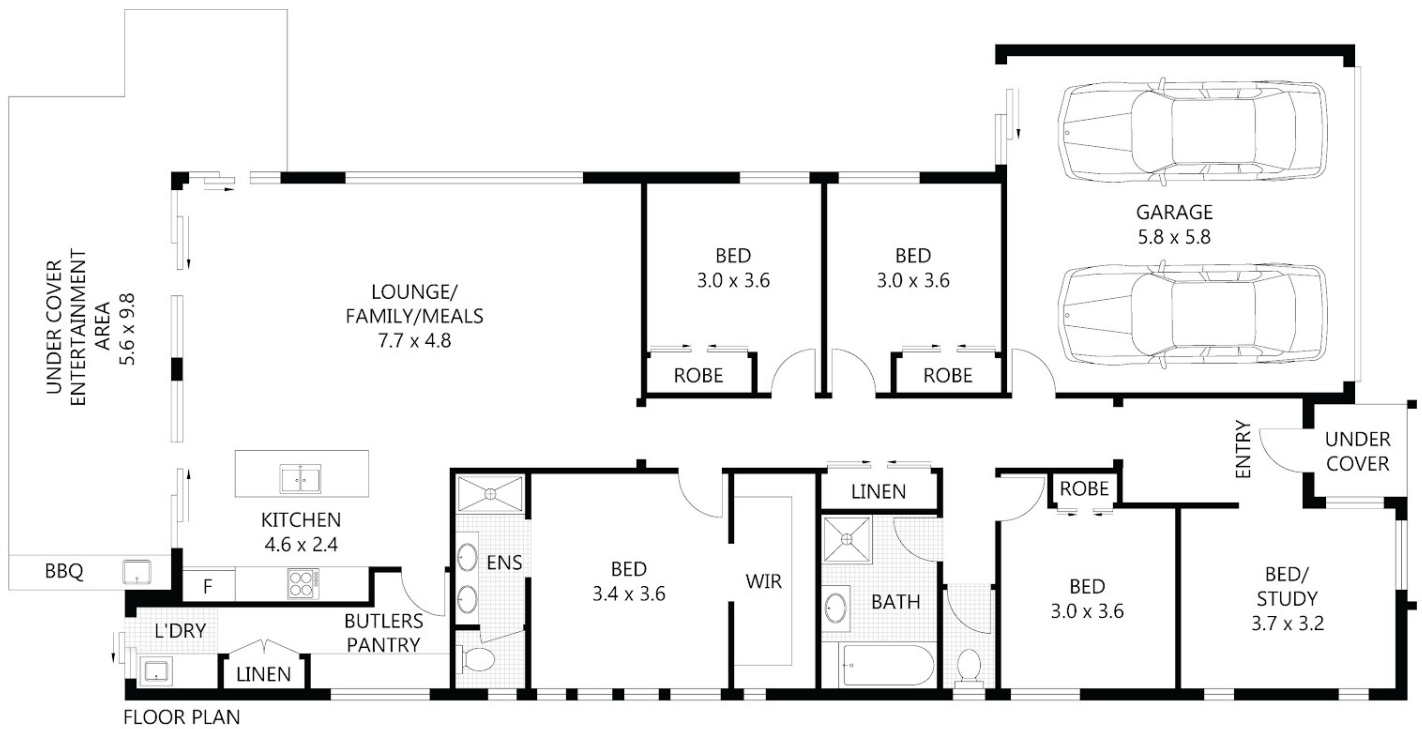
5 BED | 2 BATH | 2 CAR

PRICE:
\$840,000

OPEN FOR INSPECTION:
N/A



Gok Siva
0435654672
gok@atrealty.com.au
www.atrealty.com.au



Scale in metres. Indicative only. Dimensions are approximate. All information contained herein is gathered from sources we believe to be reliable. However we cannot guarantee its accuracy and interested parties should rely on their own enquiries.

RESIDENCE	-	155m ²
GARAGE	-	34m ²
UNDER COVER	-	31m ²
TOTAL AREA	-	220m ²



361 Brays Road, Griffin

Disclaimer: Please note this floor plan is for marketing purposes and is to be used as a guide only. All dimensions are estimates only and may not be exact measurements.