



SOLD

LOCATION, VALUE, HAPPINESS! WALK TO EVERYTHING!

THIS IS A REAL VIDEO - NOT A SLIDESHOW!

Central Redcliffe, East of Oxley! All the desirable traits you have been looking for. This well located 2 bedroom apartment, is looking for a new owner. It is within 2 blocks of the Waterfront Pier and beaches, Bee Gees Way, the Library, Redcliffe State High School, TAFE, the Cultural Centre, the Showgrounds, Mousetrap Theatre, Settlement Cove, the RSL, and all the shops, restaurants, entertainment plus 2 Sunday Markets. Fountains play in the pools and park at the end of your street – you've got to see the coloured light show in the evening! Cafes, culture, fishing and restfulness surround you. The new Redcliffe Railway station is a short 5 minute drive away. Talk about location! Easy, relaxed living or hugely popular location to rent. Perfect for retirees, first home buyers, couples, investors.....everyone! Get in, have a look now, because it won't last long. Call me for an inspection anytime.

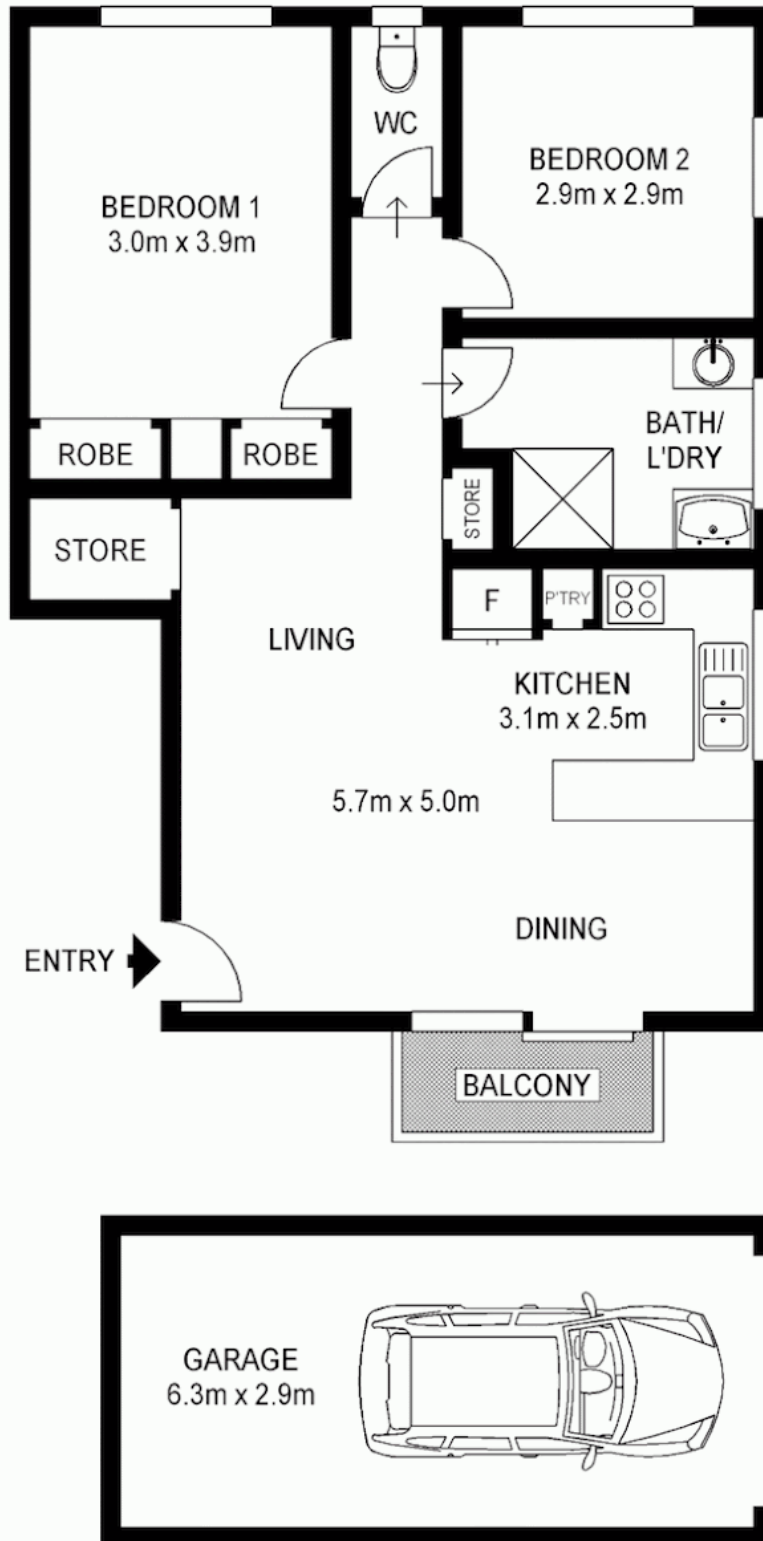
2 BED | 1 BATH | 1 CAR

PRICE:
\$272,500

OPEN FOR INSPECTION:
N/A



Bob Christie
bobchristie@atrealty.com.au
www.atrealty.com.au



@realty

Disclaimer: Please note this floor plan is for marketing purposes and is to be used as a guide only. All dimensions are estimates only and may not be exact measurements.

5/10 Meredith Street, REDCLIFFE

Bob Christie • All measurements are approximate • Drawn for marketing purposes only • Floorplan by © Industrie Media
 bobchristie@atrealty.com.au
www.atrealty.com.au

@realty