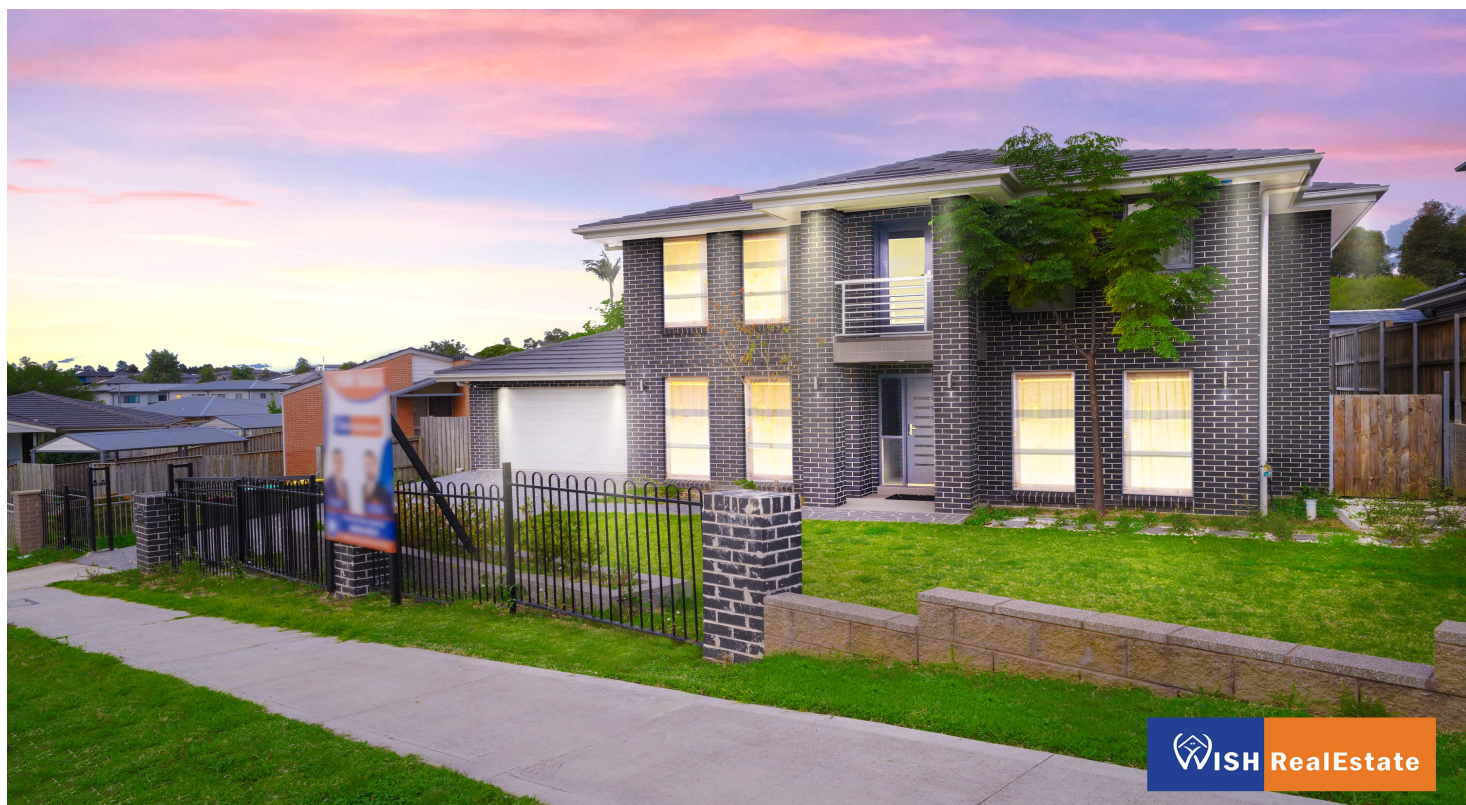


4 ELIZABETH MCRAE AVENUE
MINTO



SOLD

NEAR NEW MODERN FAMILY HOME - BUILD IN 504.8SQM BLOCK.

4 | 2 | 2

This hill set modern beauty offers everything a family could dream for. The property is very well-kept and it is in a low maintenance house on a perfect location. Don't miss out the great opportunity to purchase this fantastic property.

Features include:

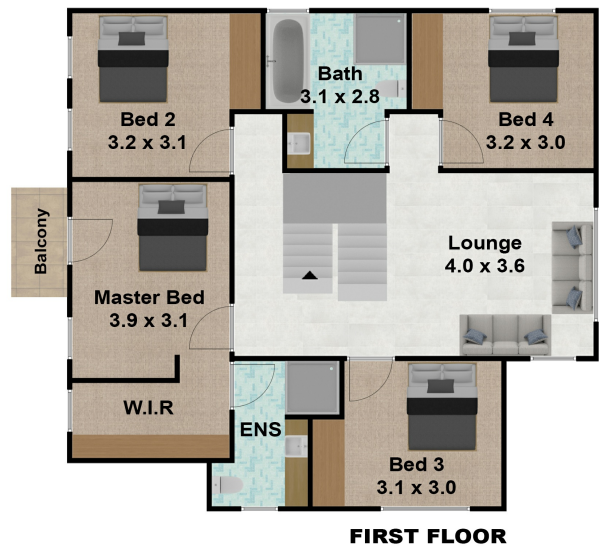
- 4 Bedroom family home with a study.
- Main bedroom with modern en-suite & walk-in wardrobe
- Open Living, Kitchen & Dining
- Nearly new new polyurethane kitchen with Caesar stone benchtops
- Tiles in the kitchen, living areas.
- Theatre/ Entertainment Room
- Ducted air conditioning
- Fully fenced yard
- Landscaped gardens
- Double lock-up garage

PRICE: \$0

OPEN FOR INSPECTION: N/A .

Prajwal Bhattarai | 0423743157 | prajwal@propticonnect.com.au | propticonnect.com.au

4 ELIZABETH MCRAE AVENUE,
MINTO



4 Elizabeth McRae Avenue, Minto NSW 2566

DISCLAIMER: THIS IS FOR ILLUSTRATIVE PURPOSES ONLY. ALL DIMENSIONS ARE APPROXIMATE AND IT DO NOT CONSTITUTE PART OF ANY LEGAL DOCUMENT.
All dimensions are approximate. Actual dimensions may vary. Floor plan prepared by realestatephotographs.com.au 0401957996