

100 CUMBERLAND ROAD
INGLEBURN



SOLD

LIVE - INVEST - DEVELOPMENT OPPORTUNITY !!

3 | 1 | 0

LOCATION and POTENTIAL to all the investor or to the first home buyers.

Start or add to your investment portfolio or make the dream of first home ownership a reality, with this four-bedroom house in Ingleburn.

Located close to Ingleburn city centre, which could be your Possible duplex site "2 title, subject to council approval (STCA)

Block is approximately 380 sqm. (lot 44 - 183.4 sqm approx and lot 45 - 196.2 sqm Approx)

It is located just opposite Ingleburn primary school and just 600 m away from the train station, shopping centre and major amenities.

* 3 bedroom home.

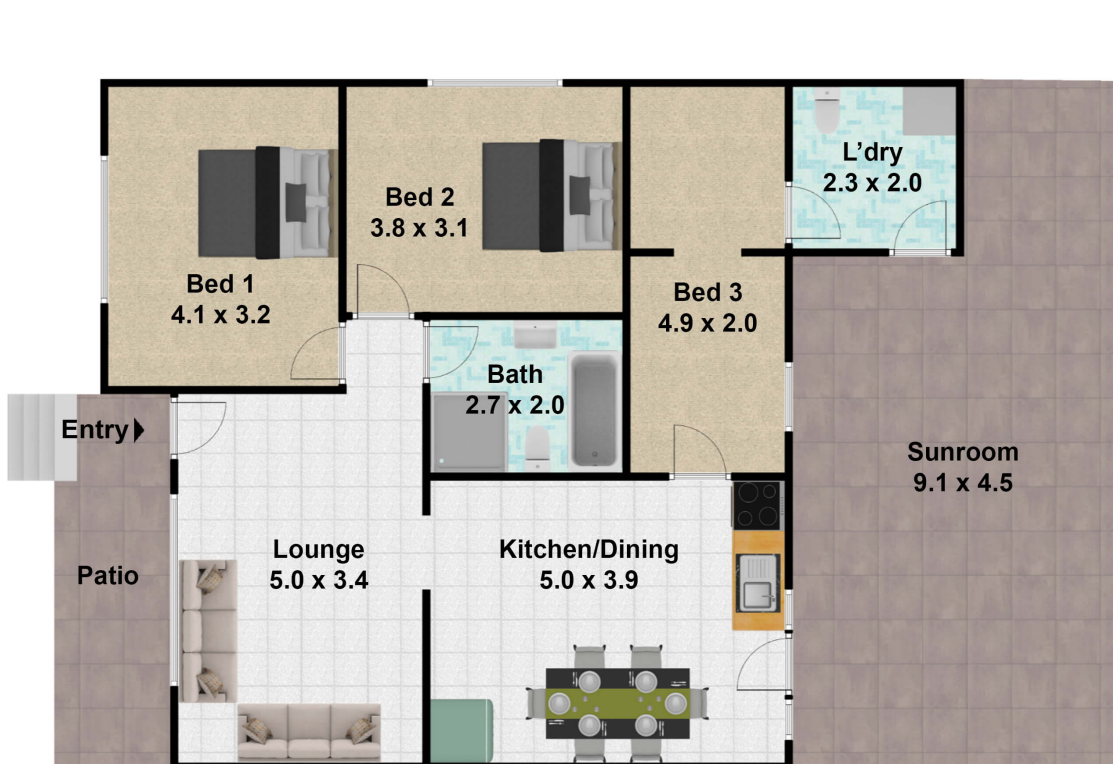
* Good size lounge room completely tiled.

PRICE: \$0

OPEN FOR INSPECTION: N/A .

Prajwal Bhattarai | 0423743157 | prajwal@propticonnect.com.au | propticonnect.com.au

100 CUMBERLAND ROAD,
INGLEBURN



100 Cumberland Road, Ingleburn NSW 2565

DISCLAIMER: THIS IS FOR ILLUSTRATIVE PURPOSES ONLY. ALL DIMENSIONS ARE APPROXIMATE AND IT DO NOT CONSTITUTE PART OF ANY LEGAL DOCUMENT.
All dimensions are approximate. Actual dimensions may vary. Floor plan prepared by realestatephotographs.com.au 0401957996



Disclaimer: Whilst every effort has been made to ensure the accuracy of these particulars, no warranty is given by the vendor or the agent as to their accuracy. Interested parties should not rely on these particulars as representations of fact but must instead satisfy themselves by inspection or otherwise.
(Rev AU#1)

Prajwal Bhattarai | 0423743157 | prajwal@propticonnect.com.au | propticonnect.com.au