



SOLD

TOP FLOOR TROPICAL, BREEZY APARTMENT

Located on the top floor of the Billara complex is this fantastic 1 bedroom, 1 bathroom apartment, set in the popular suburb of Parap, which is famous for its Saturday Market and associated shops and restaurants in the area.

The open plan living area of the apartment extends out to the generous balcony where you get peace and privacy. The modern kitchen offers plenty of storage and bench space.

Walking distance to Parap school and markets, minutes drive to the Sailing Club, Fannie Bay foreshore and the CBD is right at your fingertips!

Features include :

- * Modern 1 bedroom, 1 bathroom apartment on the top floor
- * Envidable location within walking distance to all of Parap's famous attractions
- * Kitchen located near entry in the apartment so you can cook and entertain with dining nearby
- * Spacious tiled open plan living and dining that opens out to the verandah
- * Bedroom is carpeted and includes split system A/C and built in robe
- * Modern spacious bathroom and laundry
- * Lift and stair access up to the apartment on the top floor
- Separate lockable storeroom up on level 2
- * Complex is secure with electric gate and pedestrian intercom system
- * Undercover parking for one car

Now is the right time to make a move while prices are low. This is a low entry point into the market provides scope for future capital growth. Get in quick and to secure this convenient and enviable lifestyle that awaits you.

Year Built: 1999
Area on Title: 80 square metres
Darwin Council Rates: \$1,520 per annum (approx.)
Body Corp Fees: \$1,100 per quarter (approx.)
Property Status: Vacant Possession

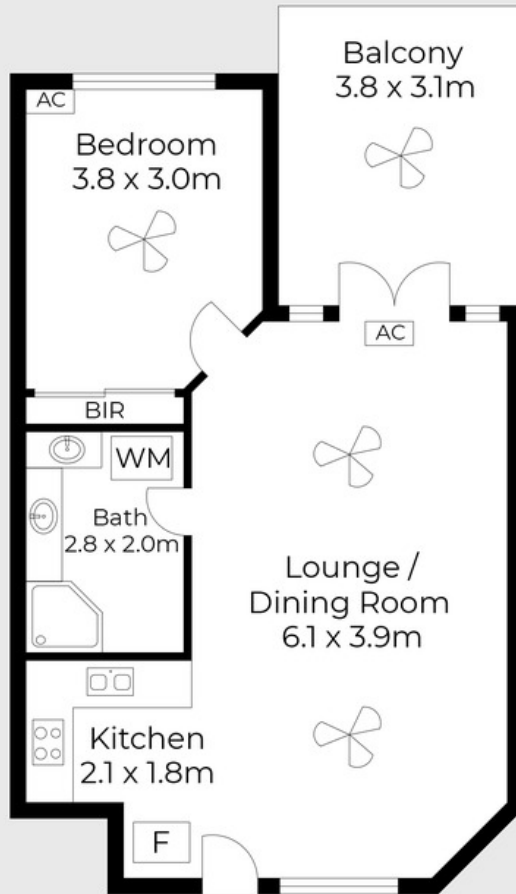
1 BED | 1 BATH | 1 CAR

PRICE:
\$270,000

OPEN FOR INSPECTION:
N/A



Nicole Wheeler
0417508800
nicolewheeler@atrealty.com.au
www.atrealty.com.au



Floor plans and site plans are for illustrative purposes only. They are not part of any legal document or title and are subject to errors, omission, and inaccuracies. Whilst every attempt has been made to ensure the accuracy of this plan, measurements of doors, windows, rooms, cupboards etc are approximate only.

APPROXIMATE AREA
LIVING AREA : 50 m²
TOTAL AREA : 62 m²

Disclaimer: Please note this floor plan is for marketing purposes and is to be used as a guide only. All dimensions are estimates only and may not be exact measurements.