



SOLD

MASSIVE PRICE REDUCTION - A MUST TO VIEW

This well presented low set brick home owned by the same owner for 15 years is ready for the astute purchaser to buy as there is nothing to do here. With a modern kitchen and modern bathroom the work has been completed for the buyer to just move in and enjoy, and on top of this the home is situated in a very quiet cul-de-sac street, so it is a must for viewing

Features:

- . 3 Bedrooms Main with built-ins
- . Open plan living
- . Modern Kitchen with ample cupboard space
- . Stylish bathroom
- . Second toilet
- . Air conditioned dining/lounge
- . Solar hot water
- . Tiled living areas
- . Inground pool
- . Covered entertainment area
- . Side access
- . New colorbond fencing
- . Lock up Garage

Location wise this home in Kippa-Ring on a 600sm2 block with great neighbours is close to day care centre's and an array of schools, including Southern Cross, Mueller College, Grace Lutheran, Hercules State and Redcliffe High, also parks close by and just minutes to the Kippa Ring Rail Station.

On top of this the major shopping centre at Kippa Ring is also only a few minutes drive so you could not wish for a better location and with the new NRL team coming next year the Moreton Daily Stadium is just down the road.

Now is the time to see for yourself what a home, what a location.

Call Errol for a private inspection or visit one of our open homes.

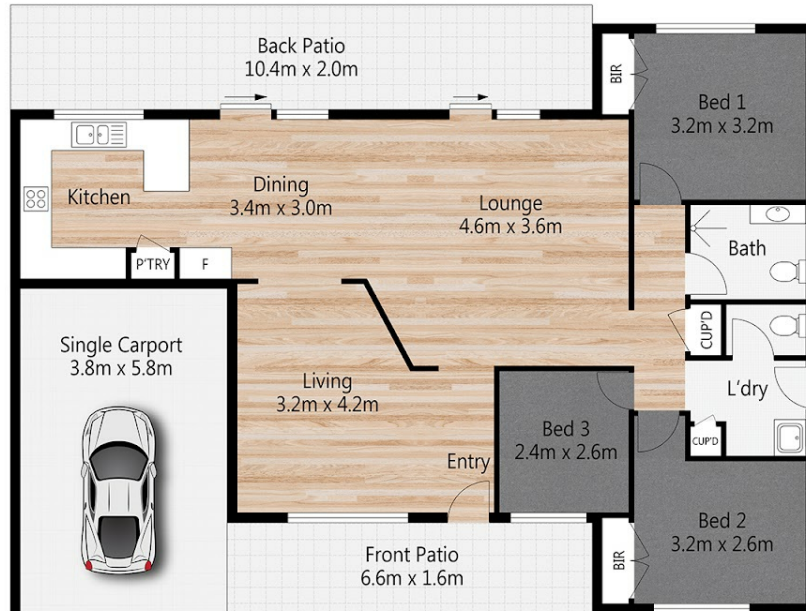
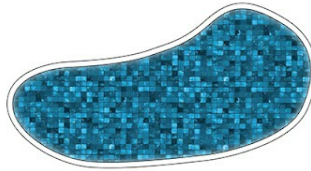
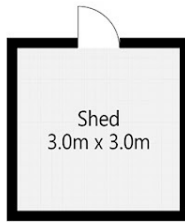
3 BED | 1 BATH | 1 CAR

PRICE:
\$650,000

OPEN FOR INSPECTION:
N/A



Errol Reibelt
0415812557
errol.reibelt@atrealty.com.au
www.atrealty.com.au



10 Sovereign Court KIPPA-RING

3 | 1 | 2 | 156m² | 600m²

All dimensions are approximate; they are subject to errors and inaccuracies and no liability will be accepted. Plans are shown for marketing purposes only.

Disclaimer: Please note this floor plan is for marketing purposes and is to be used as a guide only. All dimensions are estimates only and may not be exact measurements.