



# SOLD

## HOBBY FARM POSITIONED FOR PRIVACY & SERENITY, YET SO CLOSE...

Spacious is a word that comes to mind in every area of this wonderful lifestyle property that would accommodate a variety of needs with multiple living options on offer. This immaculate and welcoming family home set on over 52 acres is surrounded by serene spell binding views. If you've been searching for clean fresh air, privacy, a flexible floor plan, room to move, a colossal workshop and a lifestyle property for the family within an hour from Hobart CBD, then your search stops here.

Enjoying glorious views from every angle this 5-bedroom quality home has a warm and inviting feel the moment you arrive. Leading from the dining area is a well-crafted deck contributing to the special lifestyle on offer where magnificent views and sunsets are enjoyed, along with breath taking, uninterrupted panorama. Enjoy the abundance of birdlife and local native wildlife which frequently come to say hello. Beginnings of many happy memories are awaiting you.

Here are just some of the property features:

- Large spring fed dam with plenty of water
- Solar powered remote entrance gate
- Expansive open plan kitchen, dining & living
- Gas & electric cooking in the well-equipped kitchen
- Wood heating & reverse cycle heat pump
- Huge master with walk in robe and ensuite
- Second living/media room
- Full sun, warm light & bright
- Workshop big enough to fit all the toys
- Full fenced pasture paddocks
- Ideal for horses, cattle or sheep
- Stables, stock yard, ramp & chicken coop
- Often see wombats, echidnas, deer, wedge tailed eagles ...
- School bus pickup at the end of Bluff Road

This property truly has everything covered from a comfortable home to peaceful serenity, wonderful community focused neighbourhood, and living off the land opportunities all while being so close to shops, schools and services. Approx 25 mins from the well serviced centre of New Norfolk.

5 BED | 2 BATH | 10 CAR

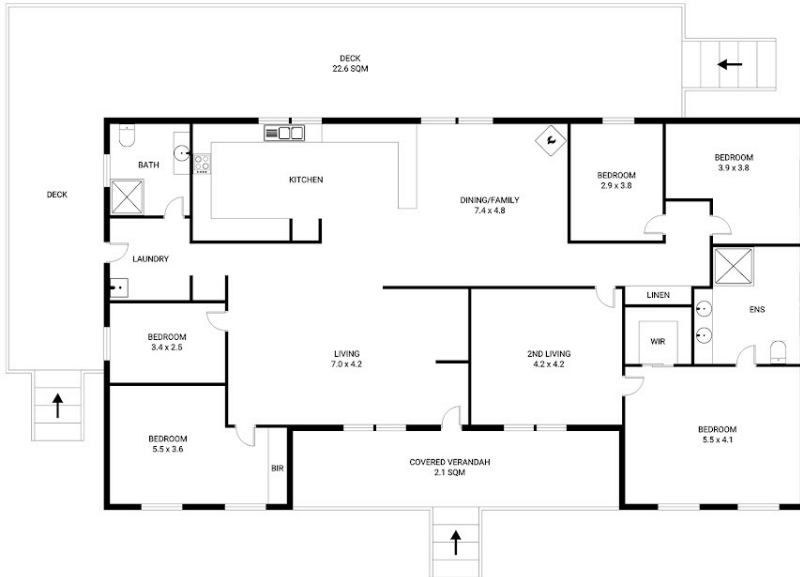
PRICE:  
\$920,000

OPEN FOR INSPECTION:  
N/A



**Racquel Cleaver**  
0497864680

racquel@atrealty.com.au  
[www.atrealty.com.au](http://www.atrealty.com.au)



599 Bluff Road, Gretna  
Total approx. floor area: 222m<sup>2</sup>

Areas and dimensions are approximate and therefore this floor plan should only be used for illustrative purposes.

Real Estate Marketing by [nextcreative.com.au](http://nextcreative.com.au)



Disclaimer: Please note this floor plan is for marketing purposes and is to be used as a guide only. All dimensions are estimates only and may not be exact measurements.