



SOLD

MAGNIFICENT COUNTRY FAMILY LIVING

18 Sequoia Drive, Moore Creek Tamworth NSW

A premier home located in the most sought-after pocket of Northwest New South Wales, situated on a 1 acre block, meticulously maintained; this property will certainly appeal to a wide range of buyers.

Featuring a generous floor plan incorporating a neutral palate throughout, this home caters for all lifestyle needs. 5 bedrooms with built in robes, the master suite features a large ensuite with double sink and walk in robe and a generous sized rumpus room adjoins two of the bedrooms. Ducted reverse cycle airconditioning throughout.

A large open plan kitchen with prestige fittings and an abundance of storage space joins the huge light and airy dining and living facilities with double doors leading onto a large covered alfresco dining area, which is complete with outdoor kitchen, fireplace and television to sit, relax and enjoy. The outdoor area is complemented with a glistening magnesium pool and spa paved with silver travertine tiling and firepit.

This state-of-the-art home includes electronic lighting, smart lights, cameras, back to base security, keypad entry and solar panels.

A huge, sealed driveway leads to the double garage and extends to the rear of the property to a 4-bay shed and storage facility. The grounds are fully fenced, hedged and landscaped to a high standard to enhance the overall sumptuous allure of this property.

Moore Creek is situated 5 minutes from Tamworth Base Hospital, Private Hospital and great schools.

Town services connected – water, sewerage, underground power, natural gas and NBN

Please book an inspection NOW as this magnificent multipurpose lifestyle property will impress.

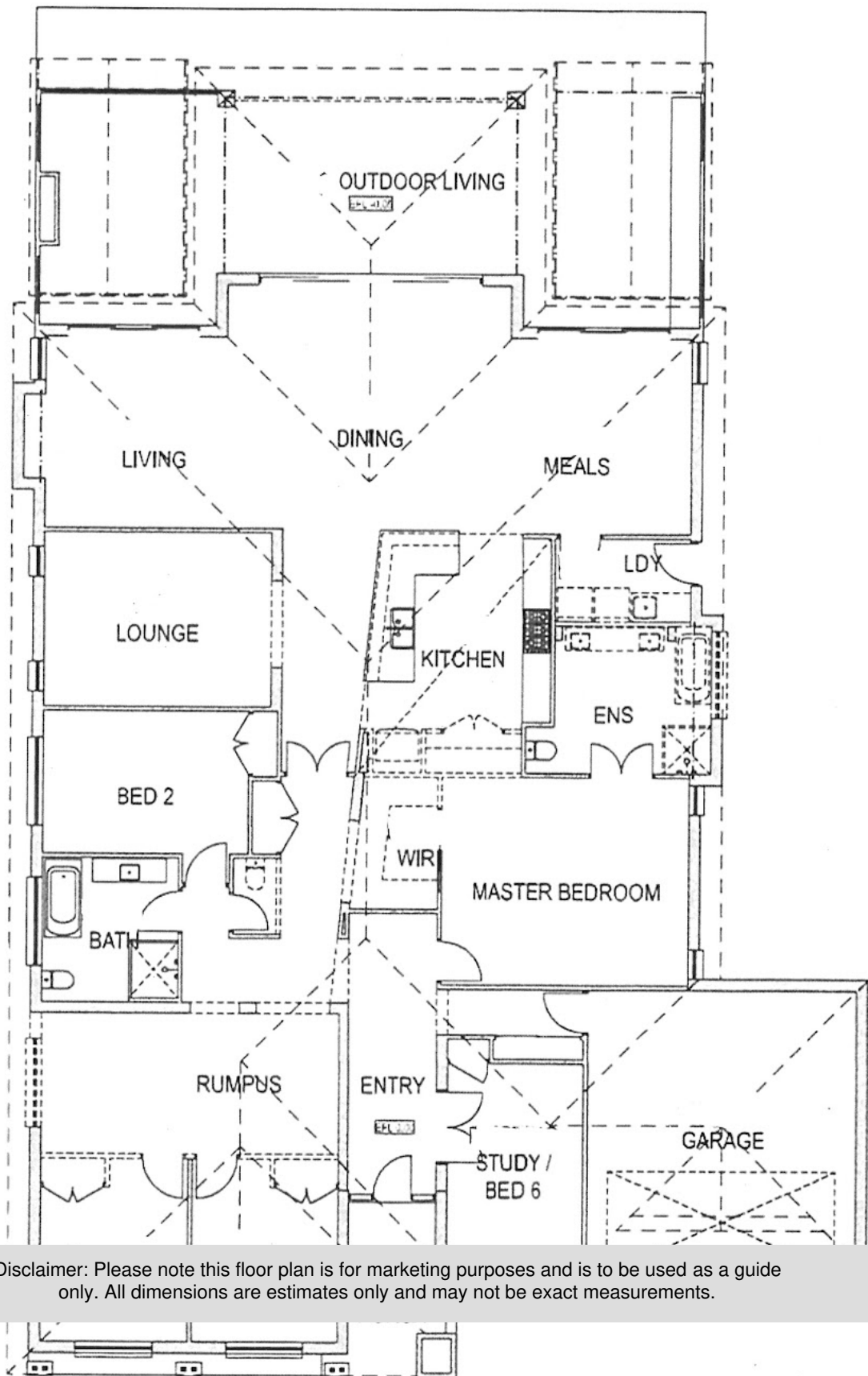
5 BED | 2 BATH | 8 CAR

PRICE:
\$1,250,000

OPEN FOR INSPECTION:
N/A



Stuart Watts
0455031619
stuart@atrealty.com.au
www.atrealty.com.au



Disclaimer: Please note this floor plan is for marketing purposes and is to be used as a guide only. All dimensions are estimates only and may not be exact measurements.