



SOLD

RENOVATIONS ARE UNDER WAY THE INTERNAL WALLS ARE IN AND NEW ELECTRICAL WIRING IS COMPLETE

This solid home in South Lismore has been stripped out and cleaned, making for a great opportunity to get your foot in the market, investors take note with such a short supply of rental properties and the location of the home you can not go wrong.

Although the home is flood-affected the home is not in a one-in-100 flood. Consisting of 3 great-sized bedrooms with a spacious usable front enclosed verandah and a large formal entry hallway all the plumbing is still intact, with a spacious area to create a dream kitchen. The bathroom has been stripped out and is ready to be fitted out to meet your needs, the internal laundry is complete with a separate toilet with space to accommodate a 2nd shower.

The original high ornate ceilings are in great condition and represent the art deco era with hardwood floors and frames. Opening onto the 2nd living area is the large covered entertaining deck complete with a 2nd handy toilet and a ramp for disability access. Painting is underway and ready to give your personal touch.

The 814sm block is flat and comes complete with a chook house and raised garden beds a single lock-up garage with drive-through access and a single carport with 2 off-street car spaces.

Features:
High ornate ceilings
Hardwood floors
A/C
Wood heater
Solar hot water
Call to secure your inspection or for further information on this property.

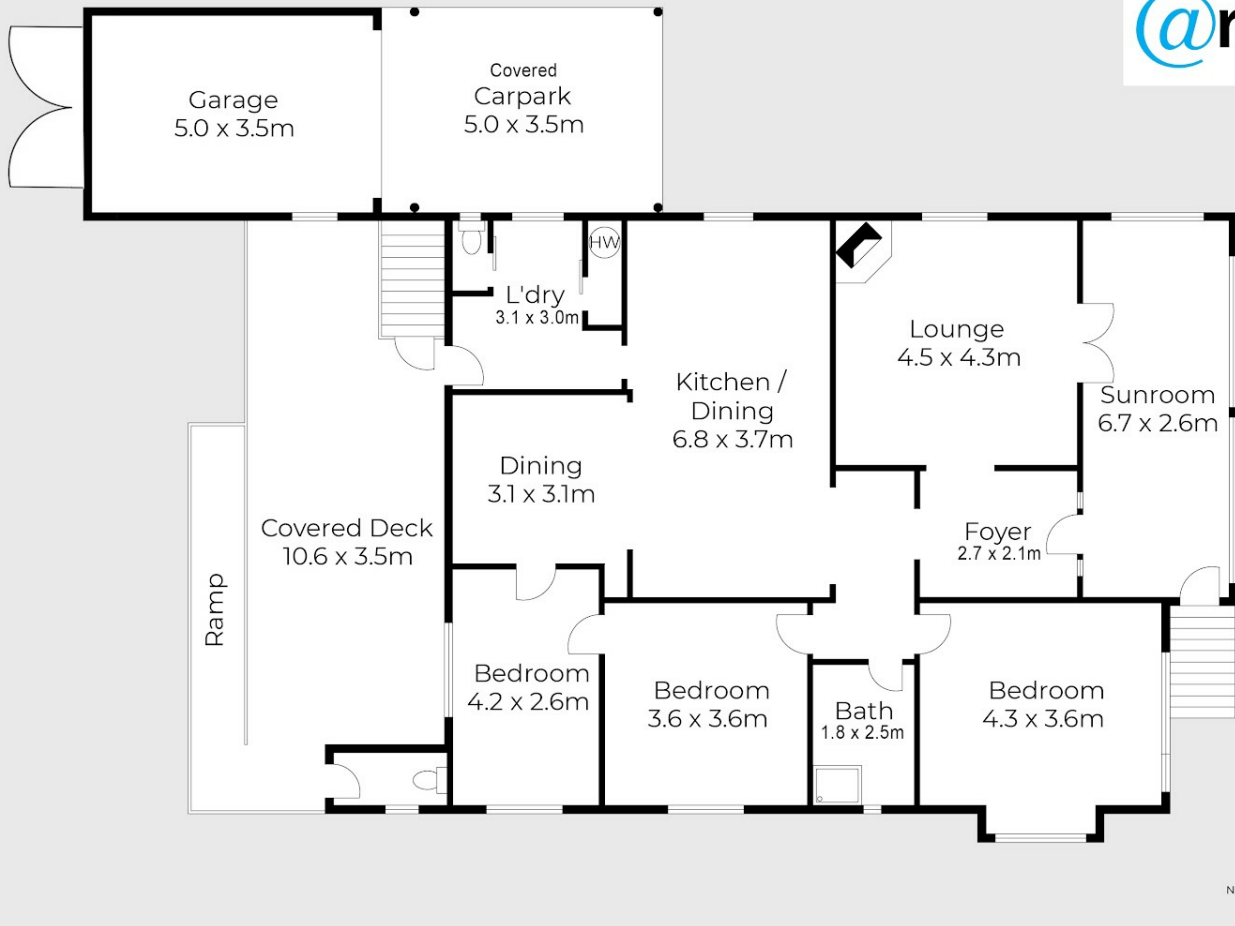
3 BED | 1 BATH | 2 CAR

PRICE:
\$250,000

OPEN FOR INSPECTION:
N/A



Peta Thompson
0403123115
petathompson@atrealty.com.au
www.atrealty.com.au



Floor plans and site plans are for illustrative purposes only. They are not part of any legal document or title and are subject to errors, omission, and inaccuracies. Whilst every attempt has been made to ensure the accuracy of this plan, measurements of doors, windows, rooms, cupboards etc are approximate only.

Disclaimer: Please note this floor plan is for marketing purposes and is to be used as a guide only. All dimensions are estimates only and may not be exact measurements.