



SOLD

MOTIVATED SELLERS - INCREDIBLE WATERFRONT ENTERTAINER !

POSITION, PRIVACY, PERFECTION

What an opportunity, This inviting single level home boasts more than most, Its an entertainers paradise

Enrich your lifestyle by acquiring this perfectly positioned 800m2 parcel of prime Bongaree canal land with an impressive home, multiple entertaining areas and only one neighbour.

From the moment you enter, the views welcome you and guide you to the rear of the home to what can only be described as an entertainer's paradise. Not only is there a newly updated contemporary kitchen, that incorporates high quality and durable bench tops that allow you to feel the difference, quality appliances, corner pantry, island and loads of bench space, ready to cook up a storm for the whole family. For those who love to entertain there is unlimited indoor/outdoor dining options via the sliding doors between the lounge/dining area and the extensive undercover outdoor living zones.

The home features soaring high ceilings, 4 bedrooms including a large master suite with newly fitted out walk-in-robe, ensuite and sliding access to outdoor alfresco area, two bathrooms one with separate toilet, two internal living areas, large garage with benchtops, freshly painted inside and out, new carpets, new curtains, new blinds and a updated laundry to make washing a dream!

Outdoors, the home cries out to be enjoyed! with an heated, in-ground sparkling salt chlorinated pool, undercover side access, a garden shed and veggie planters, a pontoon with power, water and an electric winch and then there is the undercover bar area, fire pit, alfresco dining area. The list just goes on!

Add all life's essentials like touchpad ducted aircon, 5kw of solar, spear pump and you are ready to enjoy the Bribie Island lifestyle.

The many features of this delightful home include.

800m2 block.

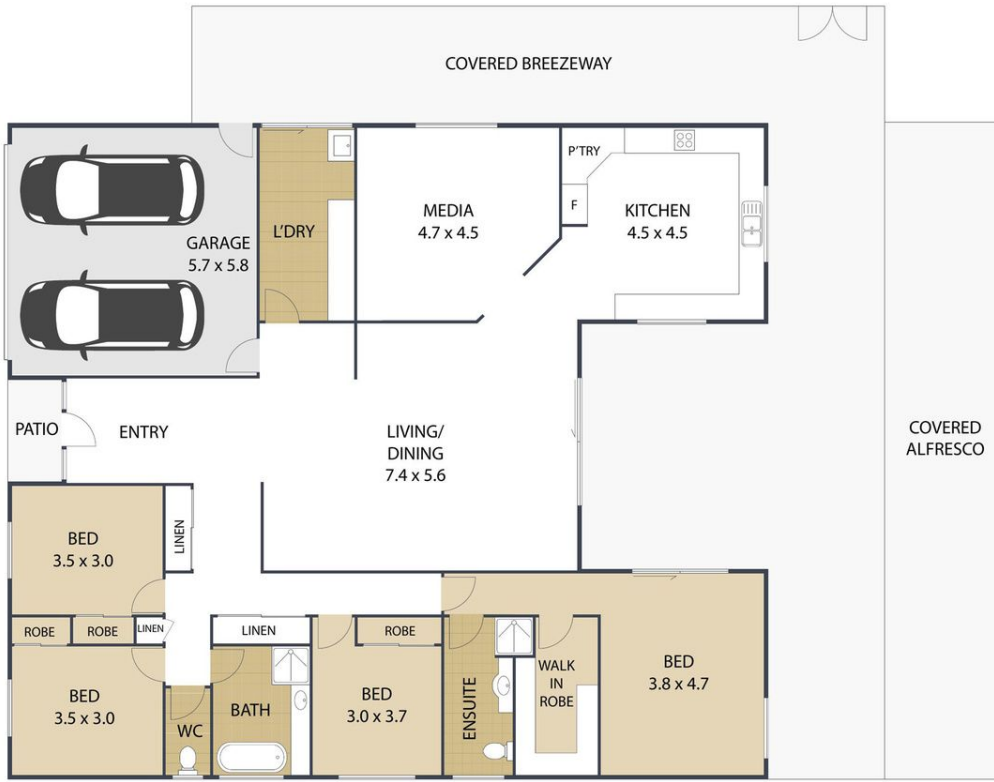
4 BED | 2 BATH | 2 CAR

PRICE:
\$1,250,000




OPEN FOR INSPECTION:
N/A



Claire Uttley
0413469993
claire.uttley@claireuttley.com.au



POOL

	4
	2
	2
TOTAL: 398m²	

41 Protea Drive, **BONGAREE**

ARTIST'S IMPRESSION ONLY: While every attempt has been made to ensure the accuracy of this floor plan's areas and measurements of doors, windows, rooms and all other items are approximate and no responsibility is taken for any error, omission, or mis-statement. This plan is for illustrative purposes only and should only be used as such by any prospective purchaser. Floor plan by: www.open2view.com.au



Disclaimer: Please note this floor plan is for marketing purposes and is to be used as a guide only. All dimensions are estimates only and may not be exact measurements.