

2 EARLS COURT, ALEXANDRA HILLS, QLD, 4161



SOLD

SOLD! HIGH-SET HOME IN QUIET CUL-DE-SAC!

SOLD!

Ladies and gentlemen, we have a fantastic lifestyle and investment opportunity for you here! Situated on a level, fenced 610m2 block in a quiet & elevated cul-de-sac is this high-set home. The spacious lounge and dining areas feature timber flooring and split-system air-conditioning. The kitchen has ample storage and opens out to the private, shaded deck/entertainment area. Out front is a verandah from which to enjoy great breezes and views of the surrounding suburb. There is also an additional room downstairs, ideal as a rumpus or workshop or storage space. And the 2-car garage and dual side access are ideal for all trucks, boats, caravans and trailers. There is a covered outdoor space below the deck and a grassy backyard for the kids and pets. This home has scope to add your own touches and it could be renovated or updated if desired. It is close to local shops and schools and is only a quick 5 minute drive to 3 shopping centres. Only 35 mins to Brisbane, 50 mins to the Gold Coast and 10 mins to Bayside's best beaches! Folks, you will really love living here, or your tenants certainly will, if you are looking to invest. But you will need to be fast, as homes in this price range are very popular and selling quickly. So don't miss out! Call now, buy today and enjoy your future! Contact Ben for a price guide.

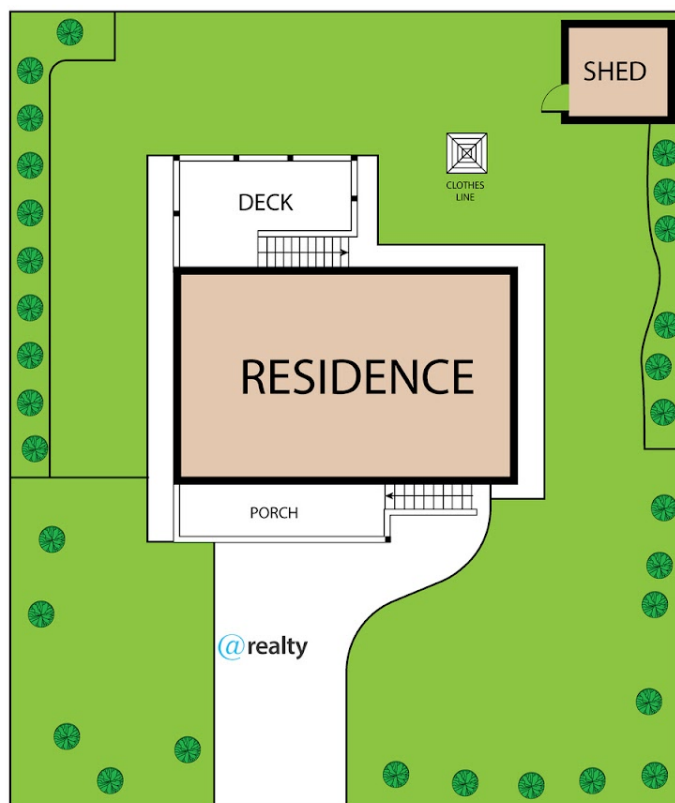
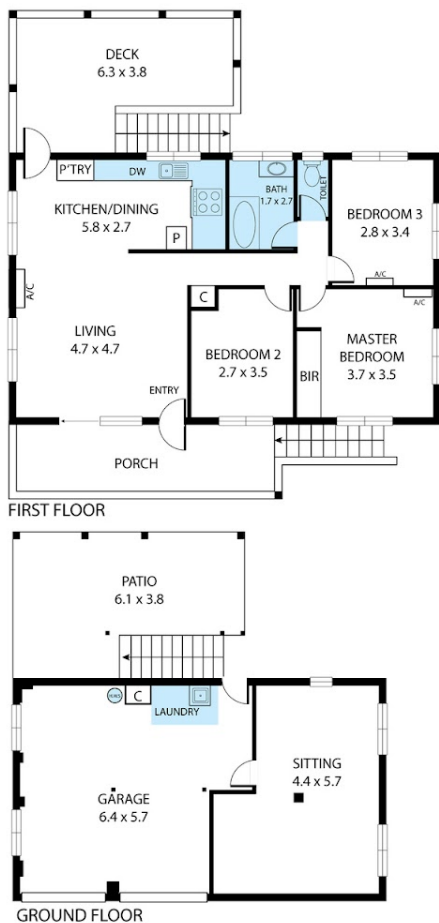
3 BED | 1 BATH | 2 CAR

PRICE:
\$610,000

OPEN FOR INSPECTION:
N/A



Ben Tafolo
0419260719
tafolo@atrealty.com.au
tafolorealty.com.au



2 Earls Court, Alexandra Hills 4161

Whilst every attempt has been made to ensure the accuracy of the floor plan contained here, measurements of doors, windows, rooms and any other items are approximate and no responsibility is taken for any error, omission, or misstatement. This plan is for illustrative purposes only and should be used as such by any prospective purchaser.

Disclaimer: Please note this floor plan is for marketing purposes and is to be used as a guide only. All dimensions are estimates only and may not be exact measurements.