



SOLD

SOLD -BY NADA JOVANOVIC

Take advantage of this amazing opportunity to secure a delightful townhouse in one of Graceville's most popular streets. This well-appointed home includes quality fittings throughout and boasts a practical design.

Located in a quiet, leafy, gated complex and spread over two levels, this spacious property has everything the growing family needs.

Polished timber stairs lead to an open plan living, kitchen and dining area seamlessly flowing onto a sizeable balcony overlooking the surrounding parkland.

The low maintenance courtyard is fully fenced, landscaped and provides a relaxing and private place to unwind.

With the luxury of living in a secure and beautifully landscaped complex surrounded by greenery, an exceptional BBQ/entertaining area and relaxing pool, you won't want to leave.

Ideally situated in a highly sought-after position of Graceville, within walking distance to Graceville State School, Sherwood State School, St Aidan's Anglican Girls school, Goodlife gym, Fraiche, Miette's and many other quality cafés and eateries. It is conveniently positioned approximately 7km from the Brisbane CBD (8 train stops).

Features Include:

- * 3 Bedrooms with built-ins*
- * Well-appointed bathrooms
- * Multipurpose/Rumpus Room
- * Pet friendly
- * Private courtyard and balcony
- * Large garage
- * Close to public transport
- * Pool and BBQ area

*****Please note that the lower level of this property has been flood affected, contact me for more information*****

3 BED | 3 BATH | 4 CAR

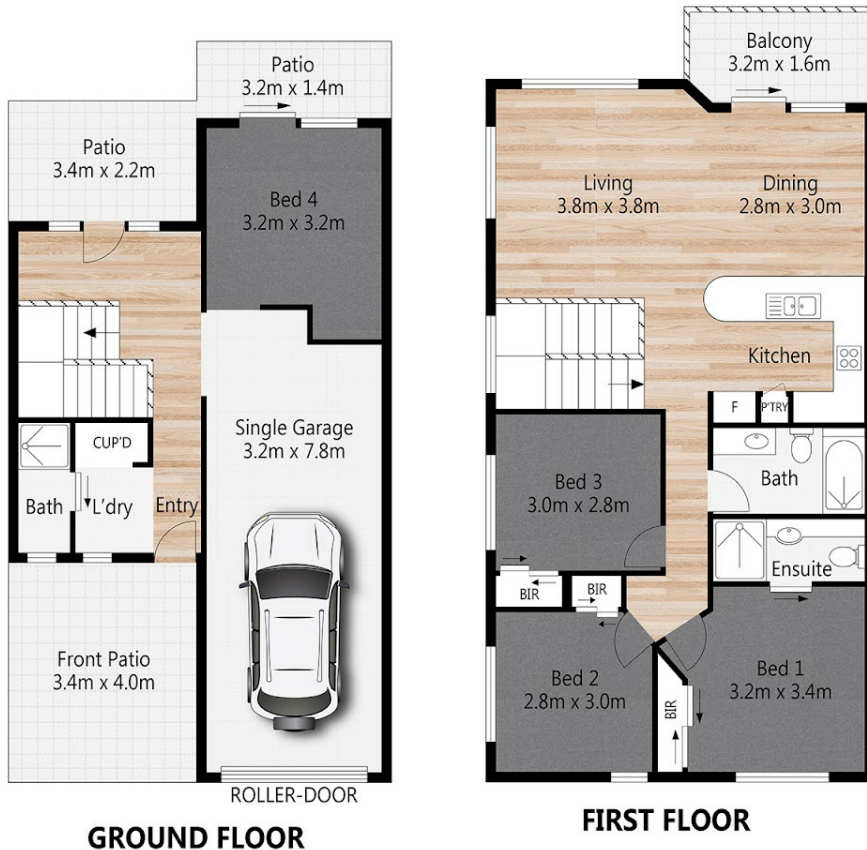
PRICE:
\$530,000

OPEN FOR INSPECTION:
N/A



Helana Kuhl
0447522643

helana@atrealty.com.au
www.atrealty.com.au



30/316 Long Street East GRACEVILLE

4 | 3 | 1 | 167m² | 251m²

All dimensions are approximate; they are subject to errors and inaccuracies and no liability will be accepted. Plans are shown for marketing purposes only.

Disclaimer: Please note this floor plan is for marketing purposes and is to be used as a guide only. All dimensions are estimates only and may not be exact measurements.