

231 WILTON ROAD, WILTON, NSW, 2571



**SOLD**

## DEPOSIT TAKEN

This home's superb setting sits impressively on an expansive 980sqm block of land. The location encompasses a semi rural lifestyle surrounded by nature's beauty and is accompanied by the calming sounds of birds and trees that can be enjoyed from any part of the home.

This exquisite abode's clever use of space has been maximised with comfort & practicality in mind, the modern vibrant interiors flow effortlessly throughout with the help of the natural light that fills each room and can be adorned at every turn. The back deck offers the perfect spot to entertain family & friends or just to relax & unwind with a cuppa while taking in the serenity.

### Features Include:

- Enclosed front yard with gated entrance
- Timber front porch deck overlooks the expansive front yard that includes established & manicured gardens
- Three generously proportioned bedrooms with built in robes, two are located upstairs
- Master suite includes access to the front porch
- Spacious living room equipped with high sloping ceiling
- Built in fireplace with brick encasing
- Family / meals area
- Well appointed kitchen with ample cupboard & bench space
- Stainless steel oven
- Dishwasher
- Pantry
- Bright & airy modern bathroom equipped with a bathtub, frameless shower screen & a floating vanity
- Plantation shutters throughout
- Polished timber floorboards to the lounge & kitchen
- Air conditioning units
- Large timber decking entertaining alfresco
- Laundry has ample space
- Single garage with laundry & backyard access
- Garden shed
- Side access with double gates
- 980sqm block

This ideal home is located away from the hustle and bustle of city life but still within close

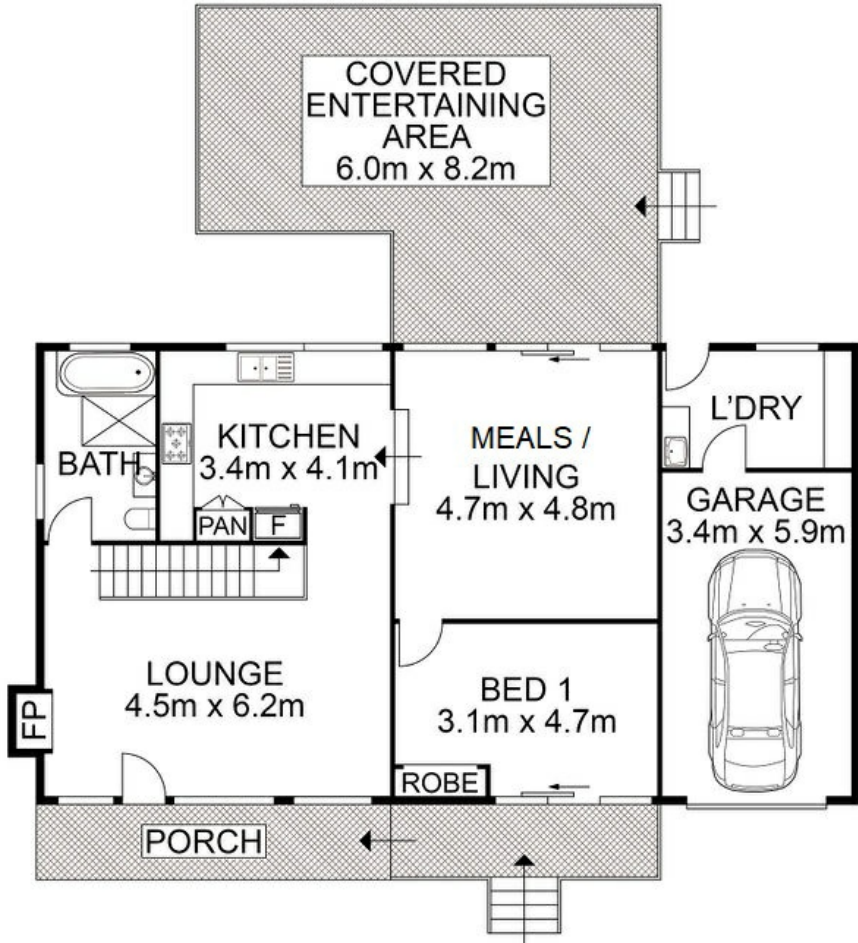
**3 BED | 1 BATH | 1 CAR**

**PRICE:**  
**\$860,000**

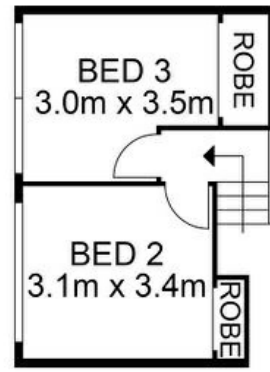
**OPEN FOR INSPECTION:**  
**N/A**



**Adam Bryant**  
**0455672323**  
adam@atrealty.com.au  
[www.atrealty.com.au](http://www.atrealty.com.au)



ENTRY LEVEL



UPPER LEVEL



Disclaimer: Please note this floor plan is for marketing purposes and is to be used as a guide only. All dimensions are estimates only and may not be exact measurements.

231 Wilton Road, Wilton

Adam Bryant • All measurements are approximate • Drawn for marketing purposes only  
 0455672323  
 adam@atrealty.com.au  
 www.atrealty.com.au

