



SOLD

LOCATION LOCATION LOCATION

Buyers, what an opportunity to secure a prime piece of unique real estate in the ever popular Dalyellup. Located within 300 m from the beach it's hard to imagine a better lifestyle/location which is close to Dalyellup shopping centre, gym, schools and transport.

This double brick home offers plenty of natural light and enough space for the whole family. The living areas are oversized with a formal lounge room, theatre room, and open plan living, dining and kitchen with fire place. All have access to entertainment area and heated pool/spa. Generously proportioned four bedrooms with BIC, Master bedroom with ensuite and walk-in-robe plus study/office. And Walk in linen/storage room. Kitchen with pantry, enough cupboard space and dishwasher. Laundry that walk into double automatic lock-up garage. 6x3 powered shed at back of home. Huge undercover entertaining area with down lights and pizza oven. Plus Side access.

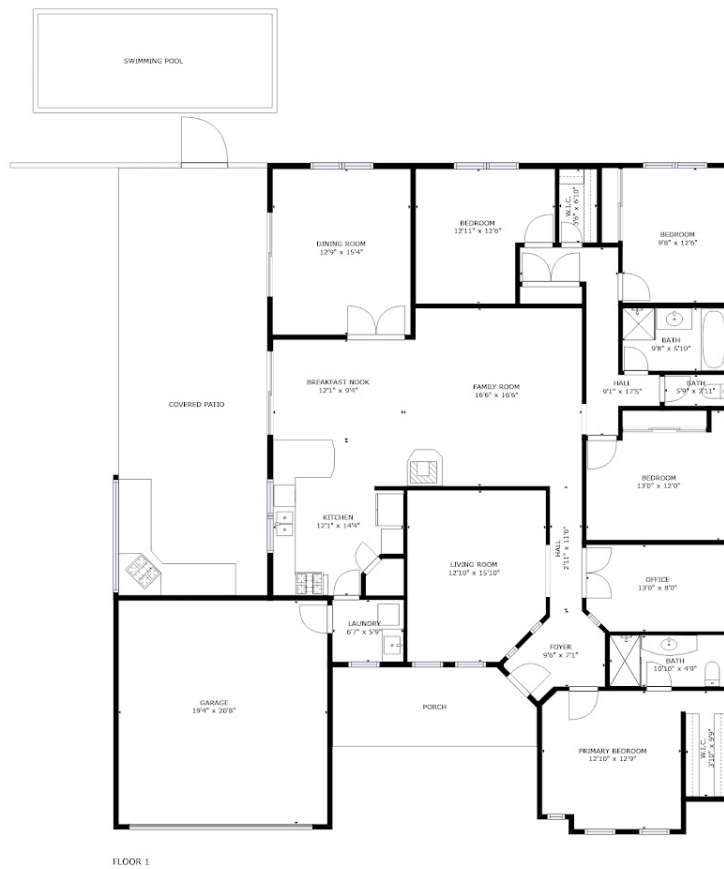
4 BED | 2 BATH | 2 CAR

PRICE:
\$620,000

OPEN FOR INSPECTION:
N/A



Anna-Marie Van Deventer
0499999067
anna-marie@atrealty.com.au
www.atrealty.com.au



FLOOR 1

GROSS INTERNAL AREA
 FLOOR 1: 2144 sq. ft, EXCLUDED AREAS:
 GARAGE: 400 sq. ft, PATIO: 546 sq. ft
 PORCH: 132 sq. ft
 TOTAL: 2144 sq. ft
 SIZES AND DIMENSIONS ARE APPROXIMATE, ACTUAL MAY VARY.



Disclaimer: Please note this floor plan is for marketing purposes and is to be used as a guide only. All dimensions are estimates only and may not be exact measurements.