



SOLD

IDEAL LOCATION

Tidy 2 bedroom unit just minutes from Salisbury's shopping precinct.
Close to public transport the property offers-
Open plan living and meals area
Built in robes to bedroom 1
Kitchen with Gas cooktop
Heating and cooling
Separate Laundry
Private rear yard
Under cover parking
Currently tenanted at \$250 per week

269823 RLA 269823

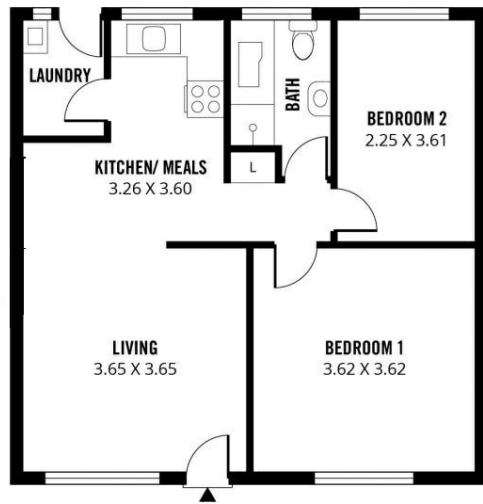
2 BED | 1 BATH | 1 CAR

PRICE:
\$230,000

OPEN FOR INSPECTION:
N/A



Darren Bayford
0403776577
dbayford@atrealty.com.au
www.atrealty.com.au
RLA: 269823



14/120 Commercial Rd Salisbury

Scale in metres. This drawing is for illustration purposes only. All measurements are approximate and details intended to be relied upon should be independently verified.

Disclaimer: Please note this floor plan is for marketing purposes and is to be used as a guide only. All dimensions are estimates only and may not be exact measurements.