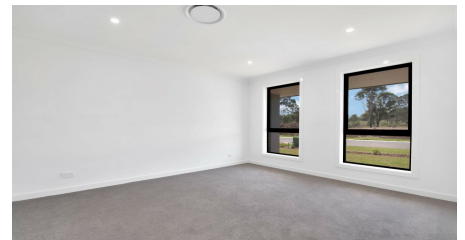
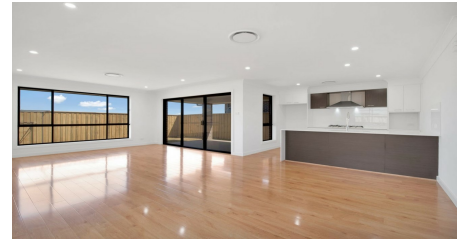


3 ASHBROOK DRIVE,
CATHERINE FIELD



FOR LEASE

BEAUTIFUL FAMILY HOME.

Beautiful 3 bedroom home in the heart of Catherine Field. Approximately 6 minutes (Approx. 4.9KM) drive to Oran Park Town Centre, various public/private schools and Gregory Hills shopings.

The property features:

- 3 Bedrooms – Main with ensuite and WIR, 2 others with built-in wardrobes.
- Kitchen with gas cooking.
- Open living and dining area
- Other features include: Ducted air conditioning, Single-lock up garage.

ONLINE enquiry policy -

All email & online enquiries received from this website will not be attended to if contact number & email address are not provided.

To be able to view the property we require you to register. We also encourage you to complete a T-app application prior to viewing.

APPLY NOW BY ENTERING THIS LINK INTO YOUR BROWSER:

<https://t-app.com.au/propticonnect>

Disclaimer:

The information has been furnished to Propti Connect from sources we deem to be reliable. We have not verified whether or not the information is accurate and do not accept any responsibility to any person and do no more than pass it on. All interested parties should rely on their own enquiries in order to determine the accuracy of this information.

3  | 2  | 1 

PRICE:
open home canceled



Rentals Propti Connect

0280752525

rentals@propticonnect.com.au