



# FOR SALE

## PRICE SLASHED! SELLERS READY TO MOVE ON!! OFFERS WANTED!

Ideally located in the iconic Southport Central Tower in the heart of the CBD, this stunning 2 bedroom apartment is a must to inspect. Situated on the 19th floor this large like new apartment is perfectly positioned with fabulous views of the Pacific Ocean, Surfers Paradise and Hinterland. The apartment has high quality fittings and finishes throughout, fully equipped gas kitchen with stone bench tops and quality appliances, internal laundry, bright and big living area with good size balcony. Ideal for first home owners or astute investors.

- \* Arguably the best of the Three Southport Central Towers
- \* 19th floor south east aspect, 105sqm big size apartment
- \* Spacious 2 bedrooms, 2 bathrooms
- \* His n Hers ensuite and massive walk in robe to master
- \* Modern kitchen with stainless steel appliances
- \* Fully ducted air-conditioning system
- \* Seperate laundry and storage cupboards
- \* Secure underground parking
- \* 24 hours security

\* Only moments walk to Broadwater, Light Rail, Australia Fair Shopping Centre, Chinatown, Business Precinct, Tafe and Griffith University

\* 5 Star facilities include 3 swimming pools (indoor and outdoor), spa, sauna, gym, steam room, BBQ facilities plus separate Entertaining terrace and chill out lounge.

\*Currently tenanted at \$470 p/w until July 2016

2 BED | 2 BATH | 0 CAR

### PRICE:

Offers Over \$379,000

### OPEN FOR INSPECTION:

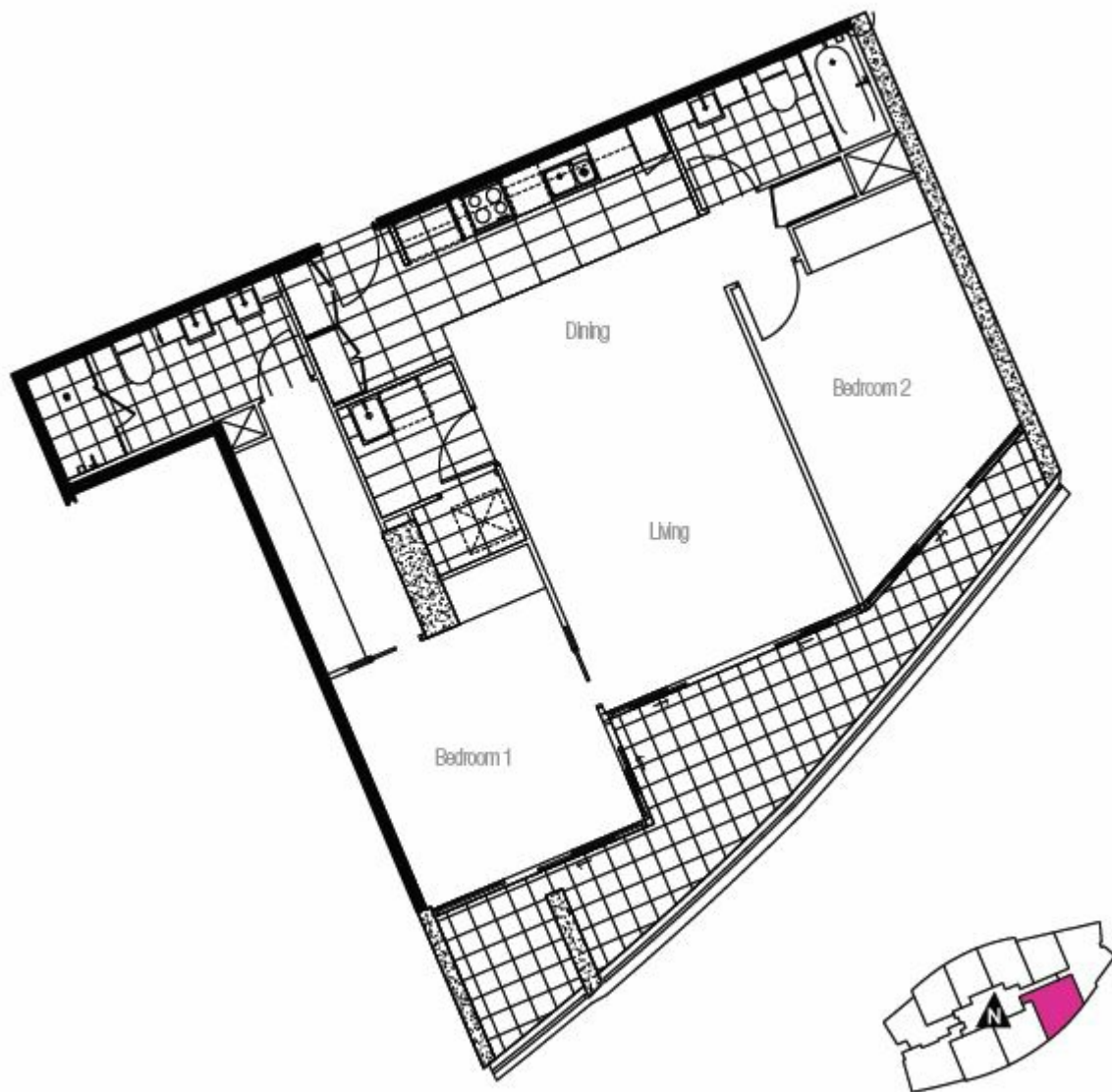
N/A



**Min Luo**

minluo@atrealty.com.au

[www.atrealty.com.au](http://www.atrealty.com.au)



Disclaimer: Please note this floor plan is for marketing purposes and is to be used as a guide only. All dimensions are estimates only and may not be exact measurements.