

SOLD

WOW ! BEAUTIFUL PRESENTATION ! TRENDY NEW KITCHEN !

- * Opportunity to purchase lovely unit in Fantastic Location. Easy walking distance to Tea Tree Plaza, Modbury Hospital, Schools & O'Bahn.
- Unit Comprises of,
 - * Lounge / Dine area with new reverse cycle split system air conditioner.
 - * Trendy new kitchen with new aluminium kitchen window looking out to rear garden.
 - * Two spacious bedrooms with built in robe to main bedroom
 - * Light & Bright bathroom with toilet & bath and large separate laundry.
 - * Extra features include new painting, new floating floors and new blinds.
 - * Garage with roller door and private access door into unit.
 - * Large & spacious rear garden with tons of potential for shed, patio, pergola and plenty of room for kids to play.
 - * This unit would make a great 1st home, investment or retirement retreat !

RLA 269823

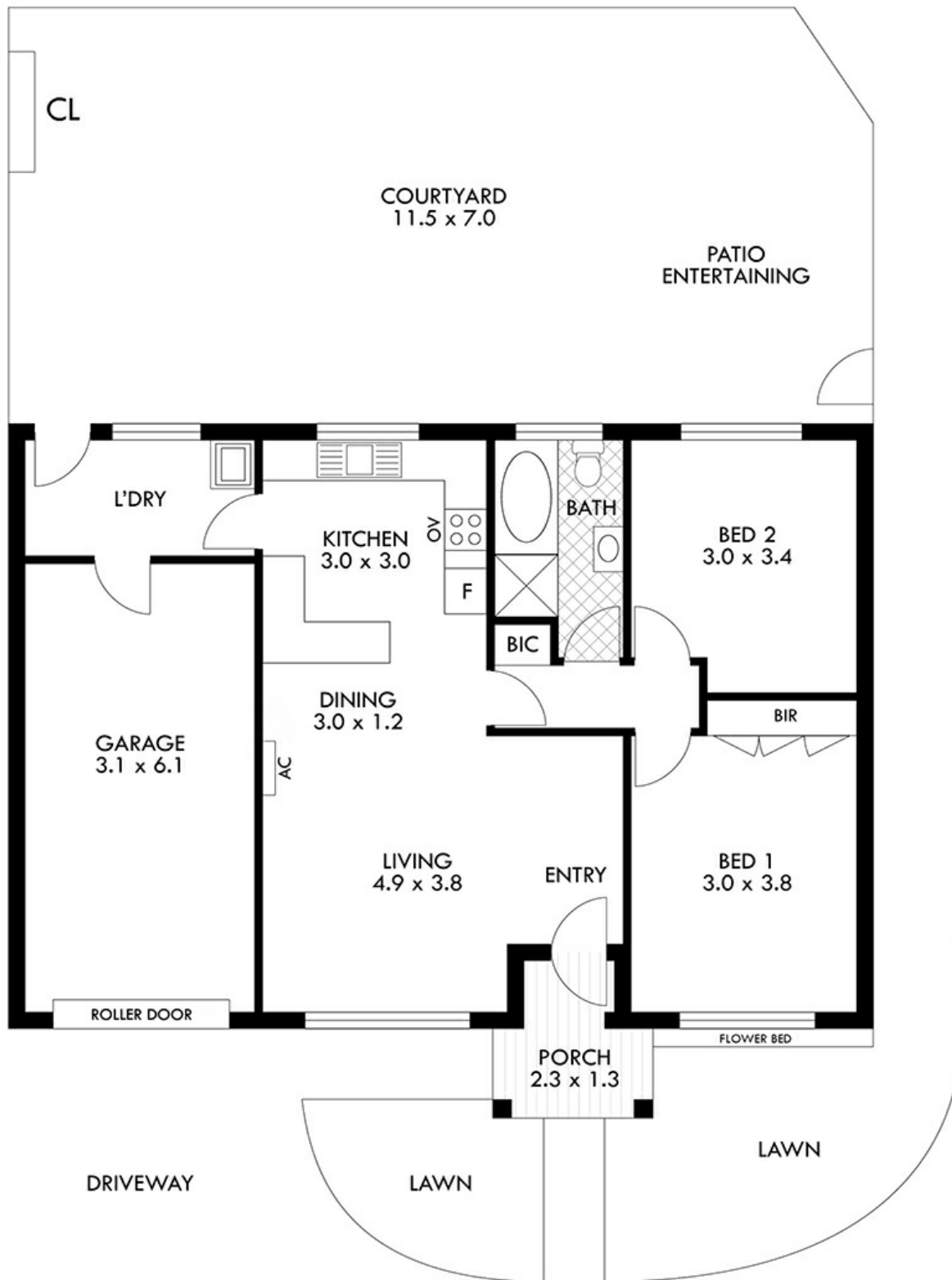
2 BED | 1 BATH | 1 CAR

PRICE:
\$360,000

OPEN FOR INSPECTION:
N/A



Terry Webster
0419993357
terrywebster@atrealty.com.au
www.atrealty.com.au
RLA: 269823



AREA (Approx.)	m ²
Ground Floor	102.8

Disclaimer: Please note this floor plan is for marketing purposes and is to be used as a guide only. All dimensions are estimates only and may not be exact measurements.

TOTAL	184.4 approx sqm	approximate and details intended to be relied upon should be independently verified.
-------	------------------	--

N

4/61 Reservoir Road, Hope Valley

Terry Webster
 0419993357
 terrywebster@atrealty.com.au
www.atrealty.com.au