



SOLD

NORTH-FACING AND A HUGE ENTERTAINING BALCONY WITH VIEWS

Calling home buyers and investors seeking an entry-level property in a prime city-fringe location.

Just 5km from the CBD and moments to the Stones Corner lifestyle precinct and busway, this smart modern apartment sits on level one of a boutique brick building of only five.

Making the most of a perfect northern aspect and views across to the city skyline, glass doors and windows span width of the home's living spaces. Meanwhile to the rear, both great sized built-in bedrooms bask in private treetop outlooks.

Enhanced by contemporary timber-style flooring, the spacious open-plan design features a spotless kitchen with dishwasher and European SMEG oven.

Large enough for a BBQ, outdoor setting and array of potted plants, veggies or herbs, the covered balcony offers the ideal spot to enjoy sunshine and cooling breezes.

Complete with reverse-cycle air-conditioning, ceiling fans throughout, insect screening and a quality Ariston washer-dryer combo, the beautifully maintained property also boasts secure intercom entry and a wide private lock-up garage with power and storage space.

Just metres from bus transport, minutes to Buranda train station or the South-East Freeway, this coveted and convenient address is an easy walk to great local cafes, restaurants, pubs and shops, with access in moments to Greenslopes Mall and Hospital, schools, parkland, Coorparoo Square bars and cinemas plus the specialty stores at Camp Hill Marketplace.

Currently leased to excellent tenants until April 2023, the property offers investors a proven high-performance portfolio inclusion or home buyers flexible terms.

Meet me (Adrian) this Saturday. We have committed sellers - this won't last...

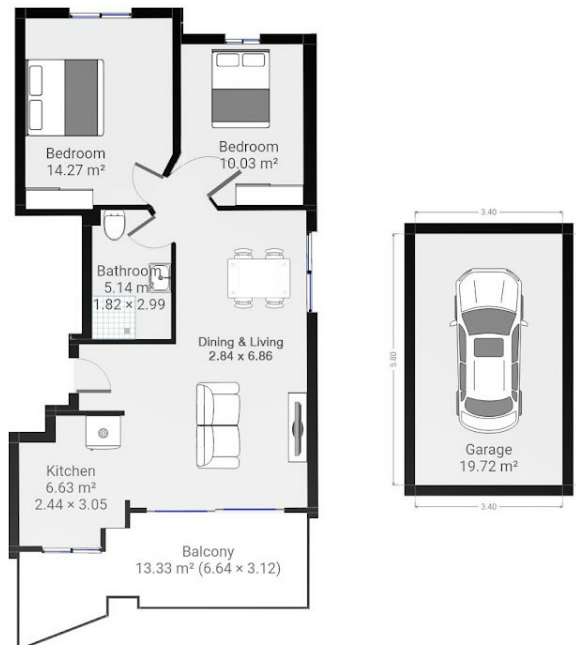
2 BED | 1 BATH | 1 CAR

PRICE:
\$450,000

OPEN FOR INSPECTION:
N/A



Adrian Matthews
0403171644
adrianmatthews@atrealty.com.au
www.atrealty.com.au



Internal approx 77m.sq
External approx 33m.sq
Total approx 110m.sq

*Artist Impression, Indicative only. Size and dimensions are approximate. All information contained herein is gathered from sources we believe to be reliable. However, we cannot guarantee its accuracy and interested persons should rely on their own enquiries.

Disclaimer: Please note this floor plan is for marketing purposes and is to be used as a guide only. All dimensions are estimates only and may not be exact measurements.