



NorthShore Coastal @realty

SOLD

RELAXED COASTAL LIVING

Noble Lakeside Park is a prestigious 'Pet Friendly'* over 50's lifestyle village. Spanning over 25 acres of well-maintained landscaped gardens surrounding a beautiful lake that has an extremely vibrant natural landscape, teeming with water birds, swans, and every variety of duck. Facilities include a fully licensed Lakeside Club hosting many social occasions enjoyed by residents, friends, and family. A great library, pool table, TV screen and a full kitchen plus a workshop. Choice of two swimming pools, three BBQ areas beside each of the club houses. Full tennis court, caravan parking area (if available)*. This community is active and enjoys a full social calendar of events including choir, arts & crafts, board games, bowling green and exercise classes and so much more. Friday's Happy Hour is always popular with the residents, especially on the deck by the lake.

Kingscliff is a prime beachside location, from the park it's approximately 12 minutes' walk to shops, cafes, restaurants and one of the best beaches in Australia. So, are you ready to downsize, forget about endless cleaning, and want affordable living? Then this well-maintained home may be just what you are looking for. Aside from living in this beautifully presented home, you will discover friendly residents, a welcoming community with a real village atmosphere, amenities, and social activities.

The Residence

- Ready to just move-in, refurbished throughout and freshly painted, new carpets, and professionally cleaned internally and externally including the roof, gutters and solar panels.
- The kitchen is well appointed, bright and fresh with ample cupboards, bench-space, corner pantry, breakfast bar, built-in fan forced oven/grill, ceramic cooktop and a double sink.
- The master and guest bedrooms are spacious; both have built-in robes, large windows and ceiling fans.
- Combined dining and lounge, generous in size and a great space to entertain.
- The added benefit is an additional room to the side that has the laundry facilities. This space is large enough to accommodate a home office, sewing or utility room.
- Bathroom has a large vanity with under-bench cupboards and there is a separate toilet.
- Front verandah to enjoy your morning coffee and read a book.
- Rear paved courtyard, partially fenced, established garden, a great place for your pet to also enjoy.
- Tandem car park for depending on the size of your cars with stencil-crete flooring.
- Other features include, freshly painted throughout, new carpets, refurbished kitchen, reverse

2 BED | 1 BATH | 2 CAR

PRICE:
\$480,000

OPEN FOR INSPECTION:
N/A



Gaylia Griffiths
0419879037
 gayliagriffiths@atrealty.com.au
www.atrealty.com.au

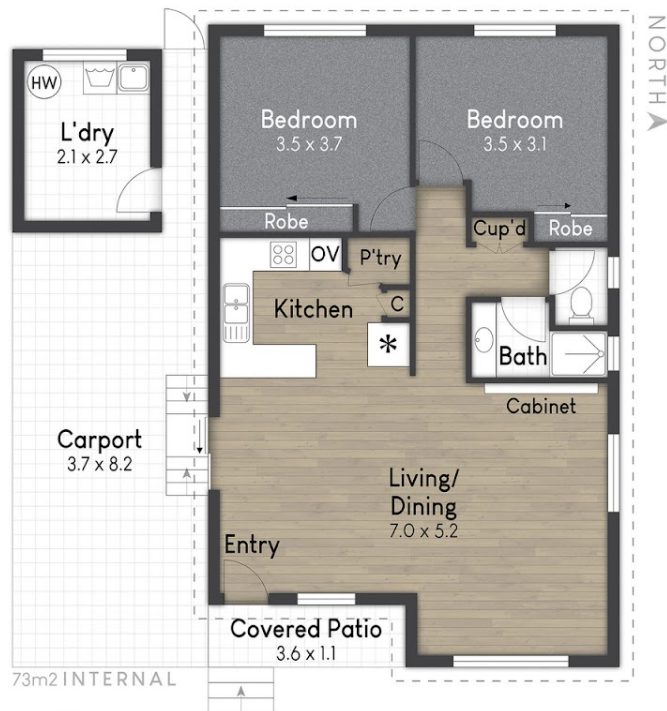
Gaylia Griffiths

0419 879 037

GayliaGriffiths@atrealty.com.au

NorthShore
Coastal

@realty



187/34 Monarch Drive, Kingscliff

Internal: 73 m² | External: 4 m² | Carport: 28 m² | Approx Total: 105 m²

While every endeavor has been made to verify the correct detail in this brochure, neither the Agent nor Seller or Contracted Illustrator accept liability for any error or omissions. Prospective buyers should make their own enquires and form their own judgement on this property.

Disclaimer: Please note this floor plan is for marketing purposes and is to be used as a guide only. All dimensions are estimates only and may not be exact measurements.

Gaylia Griffiths

0419879037

gayliagriffiths@atrealty.com.au

www.atrealty.com.au

@realty