



SOLD

THE GOOD LIFE

Ready to enjoy the good life on a few acres on the edge of Mt Gambier? This beautifully presented home sits on a slightly elevated allotment giving lovely views over the Compton countryside. This could be just what you are looking for.

Positioned perfectly on 1.68 hectares or 4.15 acres the home has a commanding appeal with its character timber entrance and tree lined bitumen driveway.

The home is immaculate and is a credit to its owners. Step in the front door and the home gives you a relaxed feel. A feature of the home is its large open meals area, complemented by a modern kitchen, breakfast bar, step in pantry and well appointed appliances. There are plenty of cupboards, large bench space and feature windows. Ducted reverse cycle air conditioning keeps the home at the right temperature all year round and ducted vacuuming runs through the entire house.

There are four bedrooms, with the main having an en-suite bathroom and walk in robe. There are built in robes in the other two bedrooms. The fourth bedroom or office is positioned adjacent to the main living area.

A rumpus room is positioned adjacent to the two rear bedrooms and is perfect as a theatre room or games room. Also at the rear of the house is an enclosed patio sunroom, just the perfect spot to sit and relax.

A covered alfresco area runs along the north side of the house, a great place to entertain family and friends and connects to the living area through glass sliding doors.

A double garage under the main roof has automatic roller doors plus direct access to the house. Outside you are spoiled with a 3 bay Colourbond garage, 2 bays for vehicles, plus an insulated workshop area. A further garage is currently used as a garden shed.

The house block is well maintained, with easy care lawns and gardens and has pet friendly fencing. A further paddock is ideal for livestock or horses.

When you add up all the extras such as a petrol generator wired to the house in case of power failure, easy care raised garden beds, orchard, reticulated sprinklers to house block, concrete cricket pitch, 25,000 litres of rainwater, plus bore, you can see this perfect country home ticks all the boxes.

Inspection invited.

RLA 269823

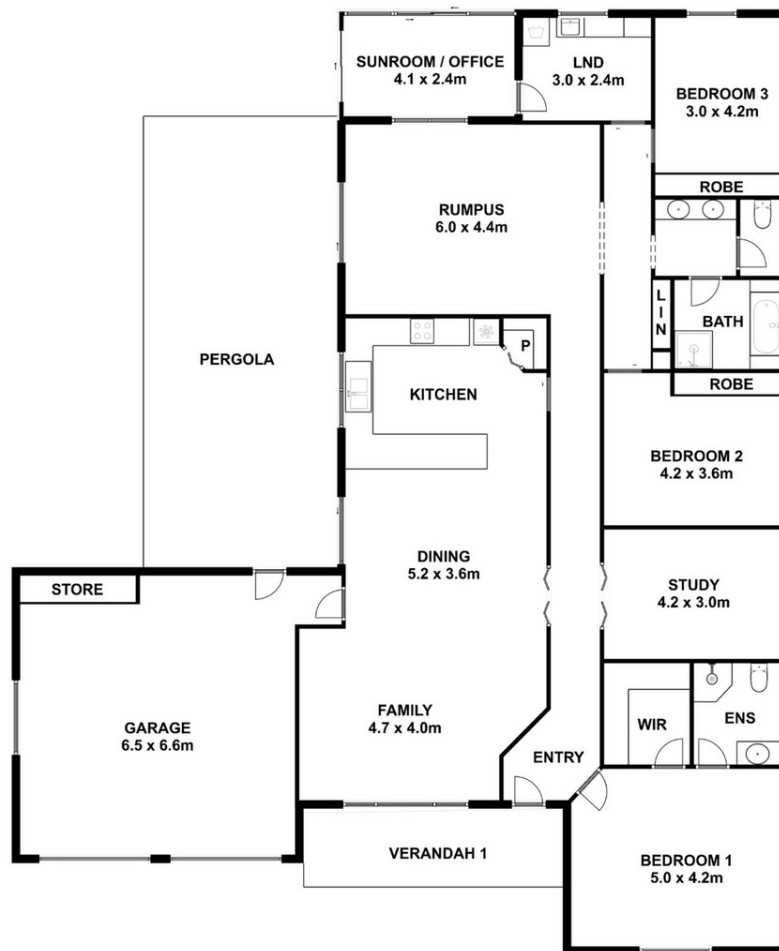
4 BED | 2 BATH | 5 CAR

PRICE:
\$705,000

OPEN FOR INSPECTION:
N/A



Peter Dempsey
0418854393
peterdempsey@atrealty.com.au
peterdempseyatrealty.com
RLA: 269823



This drawing is for illustration purpose only. All measurements are approximate only and information intended to be relied upon should be independently verified.

Disclaimer: Please note this floor plan is for marketing purposes and is to be used as a guide only. All dimensions are estimates only and may not be exact measurements.