

204A/27-29 GEORGE STREET, NORTH STRATHFIELD, NSW, 2137



# FOR SALE

## PROPOSED AUCTION IF NOT SOLD BEFORE OFFER FROM \$729000 TO \$750000

Luxe two room Apartment in Convenient location!!

Look no further for that perfect place for a young family or a smart investment.

This modern 2-bedroom home is perfectly Positioned within walking distance to local private and public schools, a Childcare centre, Concord West and North Strathfield train stations, very close to McDonald College and the bustling, trendy restaurants, cafes and shops of Bakehouse Quarter.

Also allowing fast access to M4 motorway

### Main Features:

- \* Open plan spacious tiled living and dining area.
- \* Modern gas kitchen, granite benchtop, stainless steel applications
- \* Generous 2 bedroom both with built-in wardrobes
- \* Floor to ceiling tiled bathrooms with bathtub and separate shower.
- \* Separated Internal laundry
- \* Ducted air conditioning
- \* Intercom and Secure parking space

Internal 110 sq. m approx.

Parking 15 sq. m approx.

Total 125 sq. m approx.

Council \$301 per quarter

Water \$167 per quarter

Strata \$1133 per quarter

Jeremy 0412 406 039

2 BED | 2 BATH | 1 CAR

### PRICE:

Expression of Interest

### OPEN FOR INSPECTION:

N/A



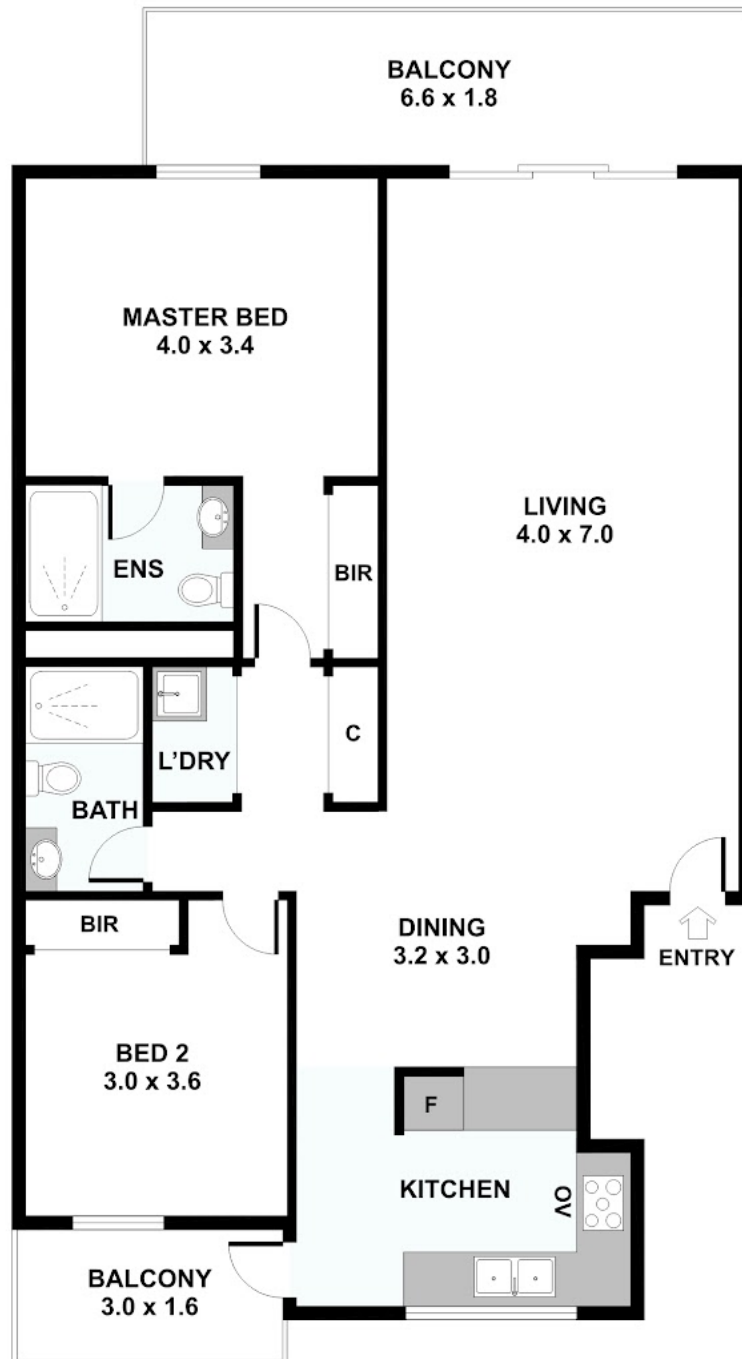
**Jeremy Yuen**

**0412406039**

[jeremy@atrealty.com.au](mailto:jeremy@atrealty.com.au)

[www.atrealty.com.au](http://www.atrealty.com.au)

# 204A/22 George Street, North Strathfield



Disclaimer: Please note this floor plan is for marketing purposes and is to be used as a guide only. All dimensions are estimates only and may not be exact measurements.

Please note: All stated dimensions are approximate only. Particulars given are for general information only and do not constitute any representation on the part of the vendor or agent.