



**SOLD**

**INVESTOR, SMALL FAMILY AND THOSE  
LOOKING TO DOWNSIZE THIS HOME IS A MUST  
SEE.**

This 3 bedroom, 2 bathroom house will pleasantly surprise you when you walk through the front door. You will see it opens up to an open plan kitchen/dining/lounge area that is bathed in natural sunlight and cooling afternoon breezes. Don't be deceived by the frontage, its bigger than you think!

This home boasts 8 solar panels, a sitting room with a skylight, double gate side access, a low maintenance yard with a garden shed.

Located on a corner block in the precinct of Woodside, this home is close to public transport, schools, child care centre, Westfield shopping centre, Cinemas, IKEA, Bunnings, Costco, North Lakes resort Golf Club, the new North Lakes Sports Club and a nearby dog park.

Property features include:-

- \* 3 Bedrooms with master ensuite with double shower heads and walk in robe
- \* 2 living areas, one with a skylight
- \* Open plan kitchen/dining/lounge flowing out to a covered entertainment area
- \* Split system air conditioning
- \* Separate Laundry
- \* Solar powered
- \* Double gate side access
- \* Low maintenance yard with a garden shed
- \* Fully fenced

An ideal purchase for the Investor, small family and those looking to downsize. Don't miss an opportunity to view this property as soon as you can. To arrange a private viewing please contact TROY today.

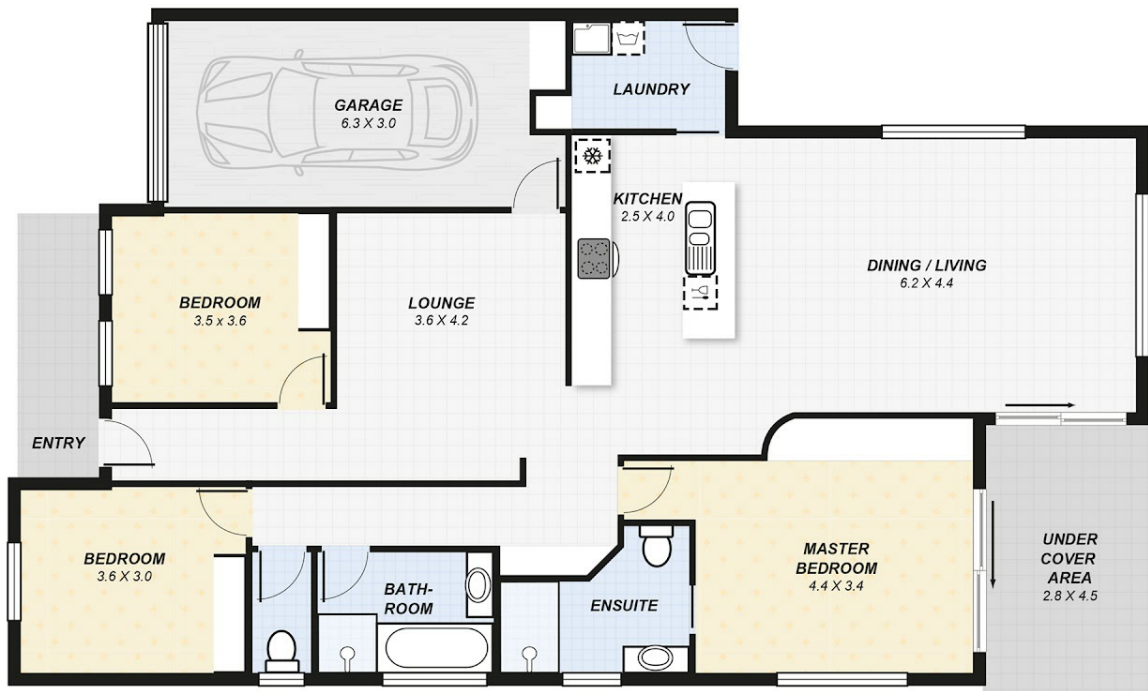
**3 BED | 2 BATH | 1 CAR**

**PRICE:**  
**\$610,000**

**OPEN FOR INSPECTION:**  
**N/A**



**Troy Merker**  
**0488749937**  
troy@atrealty.com.au  
[www.atrealty.com.au](http://www.atrealty.com.au)



Area	m <sup>2</sup>
Living:	122
Garage:	18
Under cover:	13
Total floor area:	153m <sup>2</sup> (approx)
Land	m <sup>2</sup> 385

**DISCLAIMER:** This drawing is for illustration purposes only. All measurements are approximate and details intended to be relied upon should be independently verified.

Disclaimer: Please note this floor plan is for marketing purposes and is to be used as a guide only. All dimensions are estimates only and may not be exact measurements.