



SOLD

SPACIOUS 2 BEDROOM APARTMENT - IDEAL FOR OWNER OCCUPY OR POTENTIAL TO EARN \$\$ HOLIDAY LETTING

This lovely apartment is a must see for those who would like to live in their very own Patch of Paradise. Nestled within the heart of The Lakes Resort and surrounded by Tropical Greenery, this property will impress.

Spacious and fully airconditioned, this apartment is located on the second floor of the Dalrymple Building, this particular building is highly sought after as it has access via a lift. The lift runs from the secure garage to the apartment level ensuring safety and easy access for its residents.

The apartment boasts two large bedrooms both with built-in robes, the master bedroom has its own private entrance onto the balcony.

Cooking will be a delight in this well-appointed kitchen, with gas cook top, beautiful stone benchtops, ample storage space and a servery out to the balcony. Stainless steel appliances including dishwasher, electric oven and rangehood.

A spacious and elegant bathroom with his and her vanities, stone benchtops, shower, and bath plus a large linen cupboard.

Open plan living with loads of natural light, tiled floors to the living areas, fully airconditioned, fly screens and fans throughout the apartment, plus building intercom.

Entertain on your spacious private balcony, while enjoy the gentle breeze and swaying palms in the background, or simply close the bifold doors for complete privacy.

This apartment also contains an internal laundry with an extra storage cupboard.

The resort offers its residents 4 magnificent swimming pools each with their own BBQ facilities, tennis courts, kiddies' playground, a cafe/restaurant and a small convenience store. Situated on 11 acres beside the Botanic Gardens, which, by taking any one of a variety of walking trails you can enjoy the beauty and tranquillity of the tropical surrounds.

2 BED | 1 BATH | 1 CAR

PRICE:
\$315,000

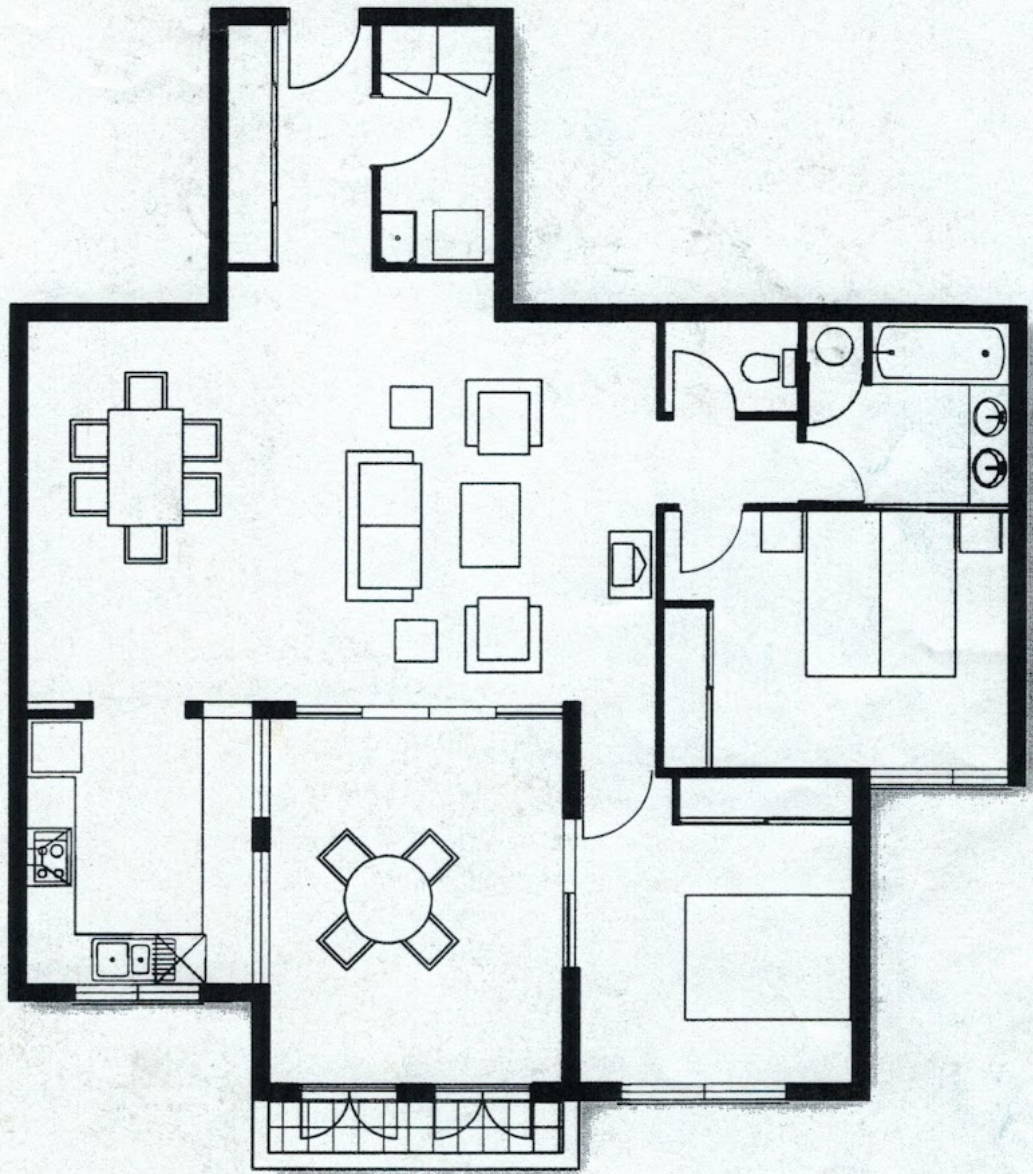
OPEN FOR INSPECTION:
N/A



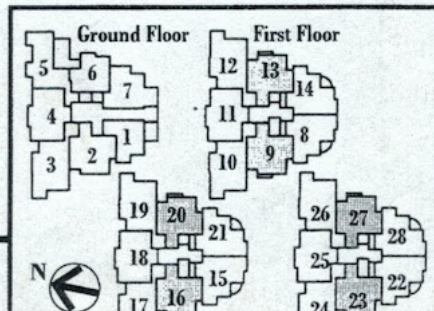
Sandy Knott
0402458532
sandyk@atrealty.com.au
www.atrealty.com.au

DALRYMPLE

A P A R T M E N T S



Units 9,16 & 23.
Units 13,20 & 27 (mirrored)
 LIVING97 m²
 LANAI17 m²



Disclaimer: Please note this floor plan is for marketing purposes and is to be used as a guide only. All dimensions are estimates only and may not be exact measurements.