

SOLD

BIG HOME, BIG BLOCK AND THAT BIG SHED!!!

Located at the end of a cul de sac with no through traffic is this beautifully renovated 3-bedroom, 2-bathroom highest home. There is something for everyone in the family!

Stunning home with a brand-new, well-appointed kitchen with gas cooktop to suit the chef of the house. A large fully fenced back yard for the kids to explore, shaded by a mango tree, banana trees and paw paw trees. And not to forget the 12m X 4m fully enclosed lockable shed complete with electricity for the tradie of the family.

The house has been pampered with highly polished timber floors, bright fresh paint and the new ensuite to the main bedroom. The main bedroom has a cute bay window which opens up offering storage space.

The home has a classic touch of tongue and groove throughout the house and the beautiful casement windows to capture the cool breezes. You will feel at home as soon as you enter this 3-bedroom stunner.

The house is fully air conditioned with remote controlled fans and all bedrooms have built in closets. It is located in the Pimlico catchment area and is close to all amenities, public transport and just 5 mins to the city.

Underneath the house is a secure concreted area, with a separate laundry. Could be used for storage or perhaps an entertaining area which leads into the backyard with mature gardens.

The large 1,012m² block offers an endless array of opportunities. This is the perfect spot to suit any young family, first home buyer or an investor. The rental return with this home could attract a return of \$470 to \$490 per week.

- Classic 1950's style Queenslander
- Roof replaced 3 years ago
- Current termite barrier in place
- Big block with a potential for subdivision (STCA)
- Potential to raise the home and enclose it underneath
- Big Shed could be utilised in many ways, for Dad's toys, or converted into a granny flat for the Grandparents!

A full information pack can be provided consisting of rates and a building and pest inspection report.

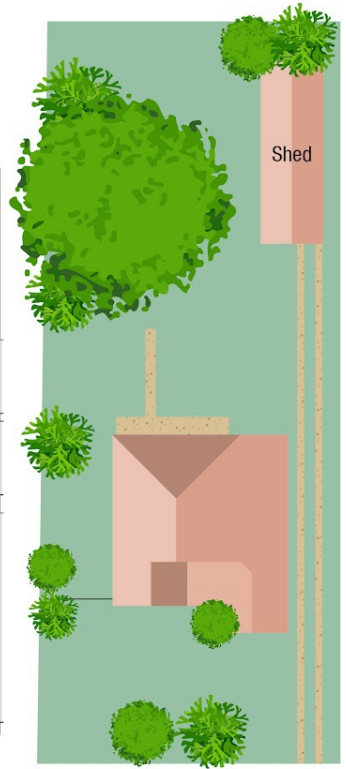
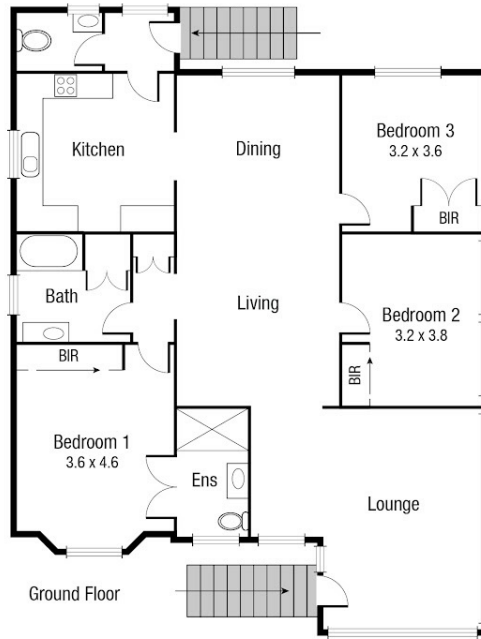
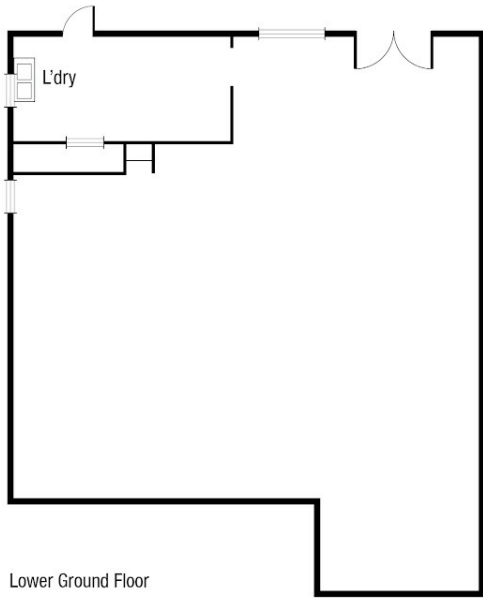
3 BED | 2 BATH | 2 CAR

PRICE:
\$480,000

OPEN FOR INSPECTION:
N/A



Kay Valkenburg
0418910338
kayv@atrealty.com.au
www.atrealty.com.au



Scale in metres. Indicative only. Dimensions are approximate. All information contained herein is gathered from sources we believe to be reliable. However we cannot guarantee its accuracy and interested persons should rely on their own enquiries.

TOTAL AREA : 236.1 sq.m

25 Haig St, Pimlico

Disclaimer: Please note this floor plan is for marketing purposes and is to be used as a guide only. All dimensions are estimates only and may not be exact measurements.