



SOLD

CHARMING COMFORTABLE AND CONVENIENT

This proudly maintained circa 1940s property is a timeless masterpiece where building pride and craftsmanship were truly an art form. Set on a level 1,012 square metre block this property has been in the same family for over 60 years and is ready for the proud new owners to create some memories of their own.

This home has an openness and a real sense of space, with 4 large bedrooms, not seen in newer properties; wide hallways leading to a generous open plan design with free-flowing formal and dining living areas. Well-appointed kitchen, equipped with new reverse cycle air-con, and electric cooking, with ample benchtop and storage space.

You'll love the traditional period details that add to the character of the property, with high ceilings, ornate cornices, timber finishes, and custom decorative timber lining up to the chair rail is reminiscent of the character and charm of the era.

The modern bathroom features a large walk-in shower, stylish vanity & bathtub with a separate toilet all in easy access to the bedrooms. Outside the home is a large backyard perfect for the kids & family pets to play, with plenty of space for veggie gardens, fruit trees or potential for a second dwelling (STCA). Car accommodation is provided by two single lockup garages, one with remote lock up and loads of storage space & custom built cool room at the rear of the garage.

With loads of potential to add your personal touches. This is a fantastic opportunity to purchase a great home in a family-friendly neighborhood, close to town, schools, local shops, transport, and only a few minutes from the CBD, this one won't last long. For more information or to arrange an inspection please call Chris Williams on 0428 333 447

4 BED | 1 BATH | 2 CAR

PRICE:
\$585,000

OPEN FOR INSPECTION:
N/A

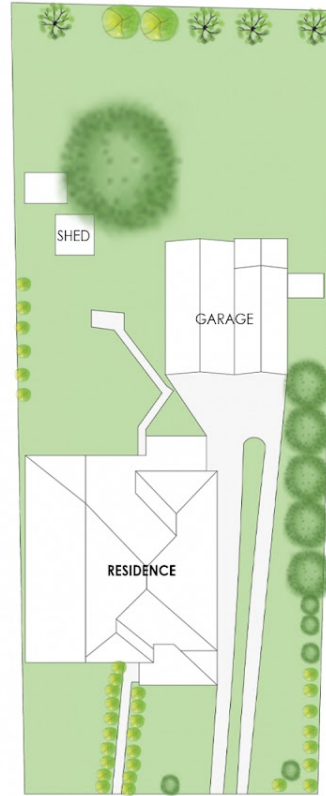
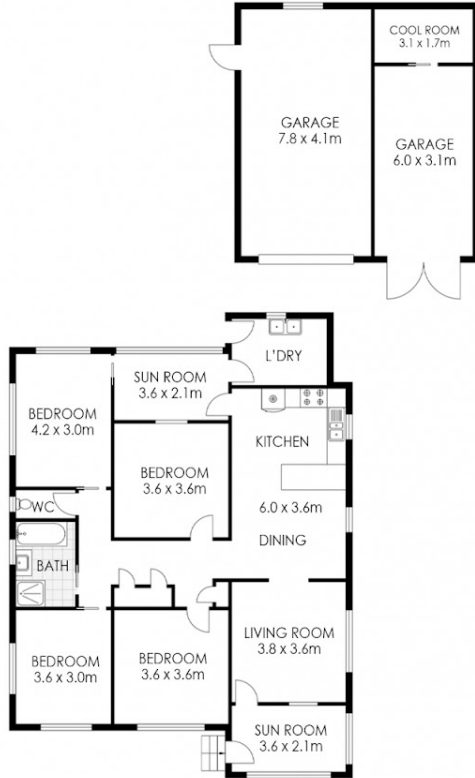
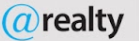


Chris Williams
0428333447
chrisw@atrealty.com.au
www.atrealty.com.au

10 Taylor Avenue, Goonellabah



APPROXIMATE AREAS
INTERNAL: 179m²
EXTERNAL: 0m²



SITE PLAN NOT TO SCALE

Disclaimer: Please note this floor plan is for marketing purposes and is to be used as a guide only. All dimensions are estimates only and may not be exact measurements.