



SOLD

EXCEPTIONAL FAMILY LIVING IN SUPERB LOCATION

This much loved and well-maintained family home set on a level 800m² (approx) allotment is primely located within minutes of both Mount Martha and Mornington townships, Bentons Square Shopping Precinct, local schools and stunning beaches.

Offering four generous robed bedrooms including master with full ensuite and walk-in robe, large central hostess kitchen with stainless steel appliances including dishwasher, spacious multiple formal and informal living and dining zones and generous family bathroom.

Extensive undercover outdoor Alfresco area, perfect for entertaining family and friends which flows on a huge fully fenced and secure backyard.

Additional features include; gas ducted heating, evaporative cooling, double remote garage with internal entry, separate caravan/ boat parking, ample off-street parking, new carpets, LED downlights throughout and much more that only an inspection can reveal.

CALL BILL NOW ON 0419514276 FOR INSPECTION TIMES

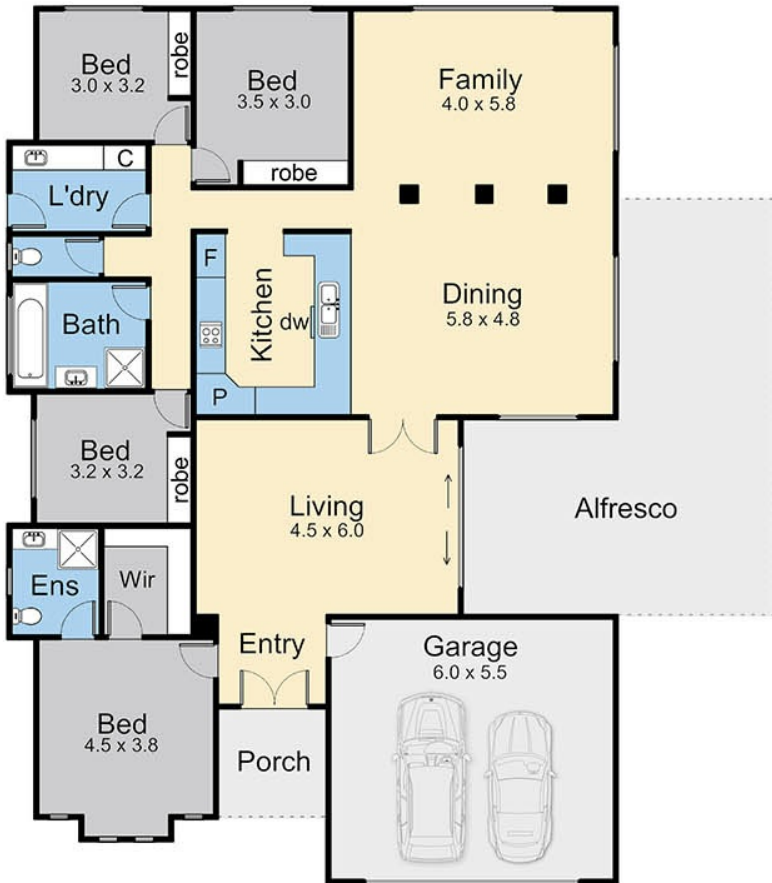
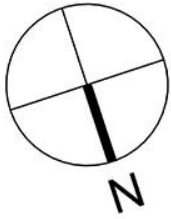
4 BED | 2 BATH | 2 CAR

PRICE:
\$1,060,000

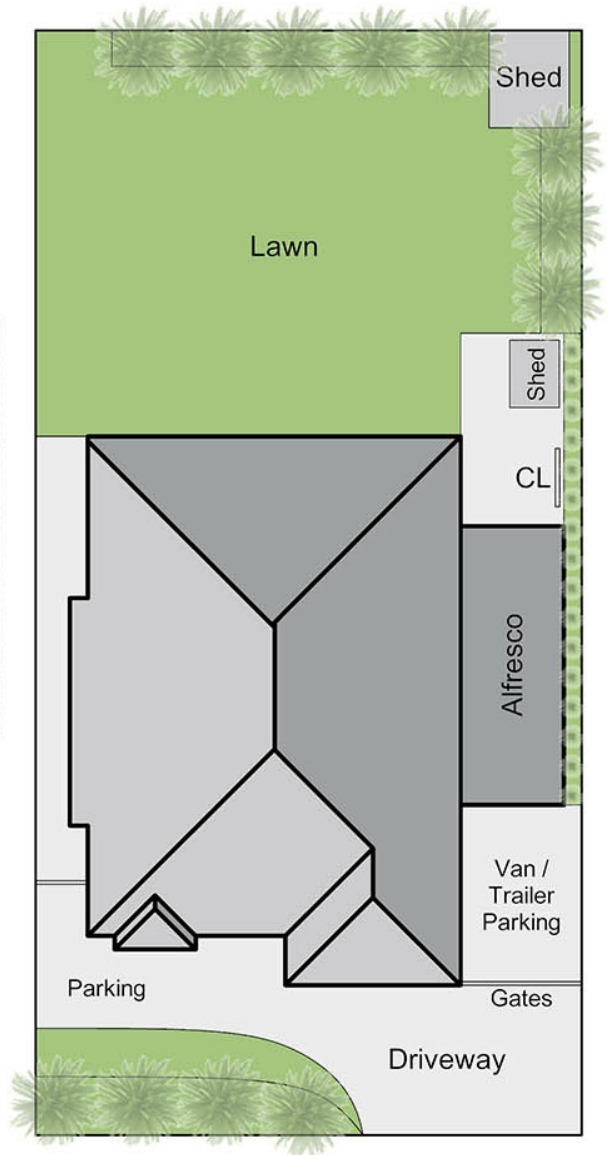
OPEN FOR INSPECTION:
N/A



Bill Katsoulis
0419514276
billkatsoulis@atrealty.com.au
www.atrealty.com.au



Floor Plan



Site Plan

Disclaimer: Please note this floor plan is for marketing purposes and is to be used as a guide only. All dimensions are estimates only and may not be exact measurements.

This floorplan is for illustration purposes only and no warranty is given to its accuracy. Purchasers are advised to carry out their own investigations. Produced by realtywriters (03) 5970 2222