

**SOLD**

## LARGE & LOW MAINTENANCE WITH A WORKSHOP

FIRST HOME OPEN SATURDAY 4TH FEB. 11.00am

Perfect for FIRST HOME BUYERS, INVESTORS OR THOSE WANTING TO ENJOY THE COASTAL LIFESTYLE.

BUILT BY The Rural Building Co. in 2002. Land size 638m<sup>2</sup> House 224m<sup>2</sup>

Located in a quiet culdesac next to the Nature Reserve, this large family home is sure to impress. There is a sense of openness in the huge main living area, with high vaulted ceilings and a wall of windows with double sliding doors overlooking the large gabled patio.

Offering a unique floor plan, upon entry to the right you will find the master suite complete with roller shutters, generous ensuite with separate WC and walk in robe. To the left is a large floor to ceiling shelved storage area. The home opens up to a large family, dining and kitchen area. There is a bedroom with double robe off the family area and a study which is large enough to be a 5th bedroom also with robe recess. The family area also has an inbuilt Bar with plenty of room for shaking cocktails.

The well designed kitchen is built to cater for a family, the large island with ample storage, dishwasher recess and dual sinks keeps you included while prepping for meals. Featuring stainless steel oven with separate grill, large 5 burner gas cooktop with range. There is no issue with storage, from kitchen drawers, under bench and overhead cupboards as well as a double pantry and double fridge recess.

The rear wing of the house has 2 queen sized bedrooms with in built robe recesses, a large activity/theatre room gives a second living area. There is a well set out bathroom area with separate bath/shower room, separate W/C and a separate vanity enabling multiple family members to use at the same time. The laundry has a workbench and a wall full of storage shelves.

The large gabled patio is accessible through the double sliding doors and offers plenty of space for entertaining all year round. There is also a roller door to give entry through the garage. To the rear of the home is the large workshop, out of sight with access through the patio. There are low

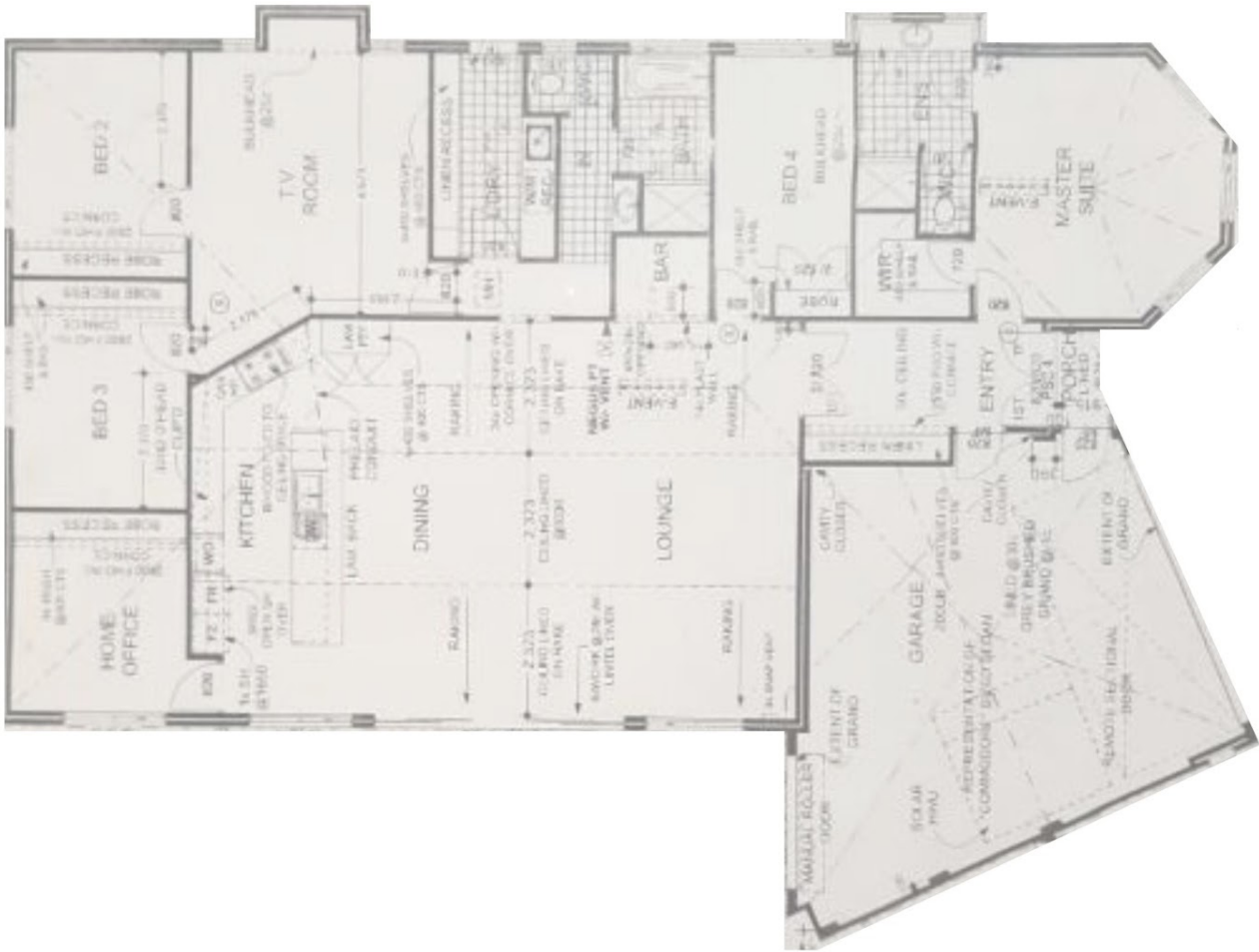
4 BED | 2 BATH | 4 CAR

PRICE:  
\$568,000

OPEN FOR INSPECTION:  
N/A



**Liz Smith**  
**0431926144**  
lizsmith@atrealty.com.au  
[www.atrealty.com.au](http://www.atrealty.com.au)



Disclaimer: Please note this floor plan is for marketing purposes and is to be used as a guide only. All dimensions are estimates only and may not be exact measurements.