



SOLD

EXPRESSIONS OF INTEREST CLOSING MONDAY 31ST OCTOBER

A Contemporary Cul De Sac Lifestyle Awaits!

Inspiring design, custom features and a coveted cul de sac address are just a few of the essential elements of this impeccably presented five-bedroom family home offering contemporary luxury and zoned family living.

From the most private entries in the bowl of a family-friendly court, be inspired by spacious, light-filled interiors encapsulating single-level living without compromise. Featuring a flexible floorplan that works effortlessly for the modern-day family, the children's wing of the home offers three generous bedrooms set around an expansive rumpus/breakout space, and family sized bathroom with a separate bath, shower and WC. A well-designed master suite provides privacy and luxury with a generous walk-in robe and dual vanity ensuite, with a further bedroom offering the flexibility of guest accommodation/home office capabilities.

Multiple indoor and outdoor living areas offer refined formal and informal spaces, including a separate living space perfect for formal entertaining or as a media/theatre room for the whole family. A bright, open-plan living and meals area invites family and friends to relax and stay a while, with an effortless integration with the expansive outdoor alfresco living space provided by the wall of sliding glass doors, transforming the space in an instant. An entertainer's kitchen ensures this family home is well supported with a suite of quality appliances, plenty of storage and a dedicated butler's pantry.

Surrounded by landscaped gardens on a delightful 823m² (approx.) garden allotment and overflowing with features including a powder room, mud room, air conditioning and ceiling fans for year-round comfort. With a considered approach to sustainability, the home features both wall and roof insulation combined with a Colorbond roof and 22 panels/5.8 kW solar electricity to provide excellent energy efficiency, and both under and above-ground water tanks with pumps. Other notable features include an oversized two-car garage with internal access and plenty of off-street parking for your boat/trailer/caravan.

FEATURES...

- Thoughtfully designed family residence

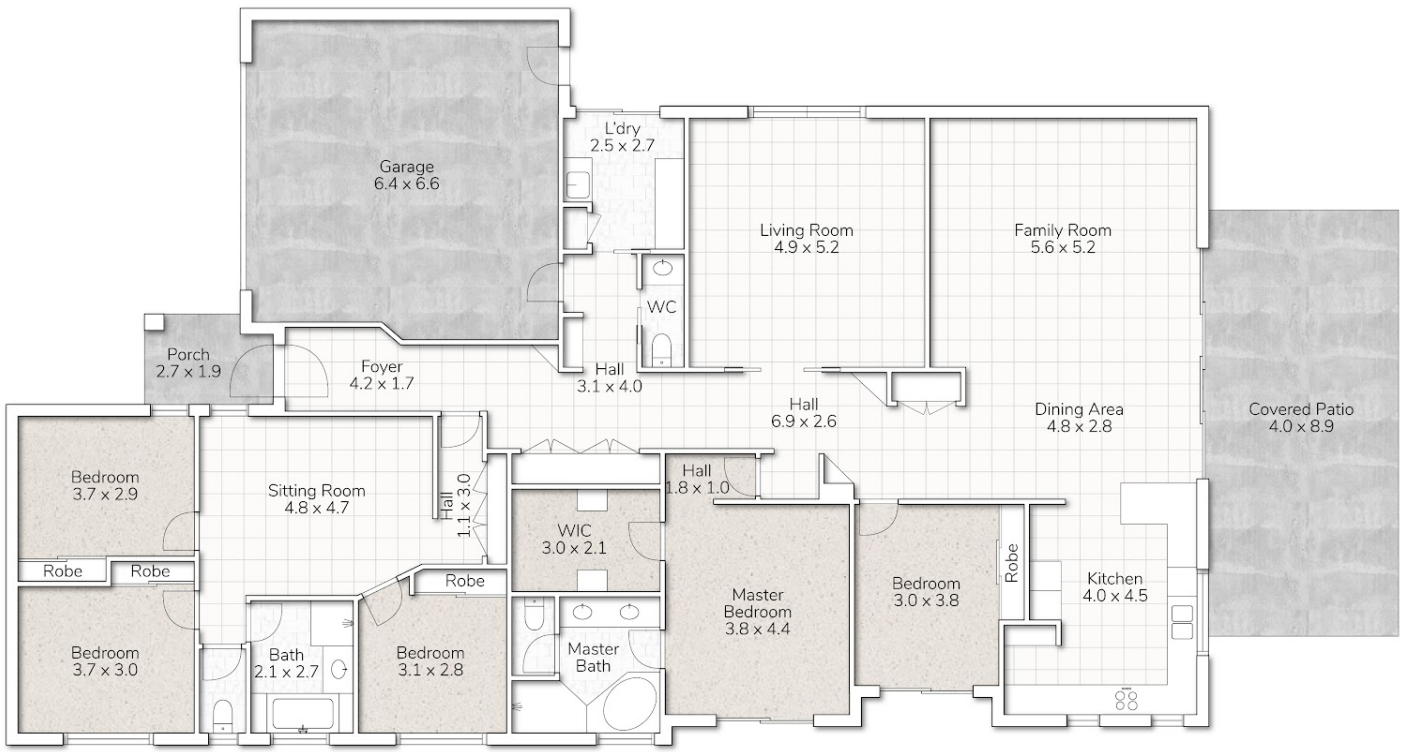
5 BED | 2 BATH | 2 CAR

PRICE:
\$1,107,000

OPEN FOR INSPECTION:
N/A



Andrew Botwright
0402784250
andrewbotwright@atrealty.com.au
www.atrealty.com.au



15 DARLINGTON CLOSE, CARSELDINE

This floor plan is for marketing purposes only. Dimensions and layout are approximate. Mountfort Media gives no guarantee or warranty over the accuracy of this plan.

INTERNAL AREA:	289M ²
EXTERNAL AREA:	40M ²
TOTAL AREA:	329M ²
	5
	2
	2

Disclaimer: Please note this floor plan is for marketing purposes and is to be used as a guide only. All dimensions are estimates only and may not be exact measurements.