



SOLD

DON'T MISS THIS ONE!

Welcome to 10 High Street, West Tamworth. Cottage garden, period features, ornate ceilings need I say more? These are just a few of the features that will greet you upon entry to this gorgeous home in Central West. With much of the work already done but still a little room to put your own stamp on this property, 10 High Street has been a much loved family home, and this outstanding opportunity for prospective purchasers has only arisen due to a need to upsize.

Features include:

- * Dual access - corner block of 677m2 (approx.)
- * Three large bedrooms - all with ceiling fans
- * Main living/dining area complete with slow combustion wood fire & split system
- * 2nd living area/dining room/home office or workspace
- * Two bathrooms with the 2nd being combined with the laundry
- * Ducted evaporative cooling + split systems
- * Raised vegetable garden beds
- * Two bay shed with power
- * Rear deck - perfect for the Summer BBQ
- * Large yard - the perfect space for the kids to enjoy, or furry members of the family to run around

Quality listings in the Central West area are few and far between at present, as are listings in this price range.

Don't miss out! Contact Dee Plowman @realty on 0488 696 563 to arrange your inspection.

Disclaimer:

All information contained in this advertisement & all marketing material for 10 High Street, West Tamworth is gathered from sources we consider to be reliable however, we cannot guarantee or give any warranty about any information contained herein.

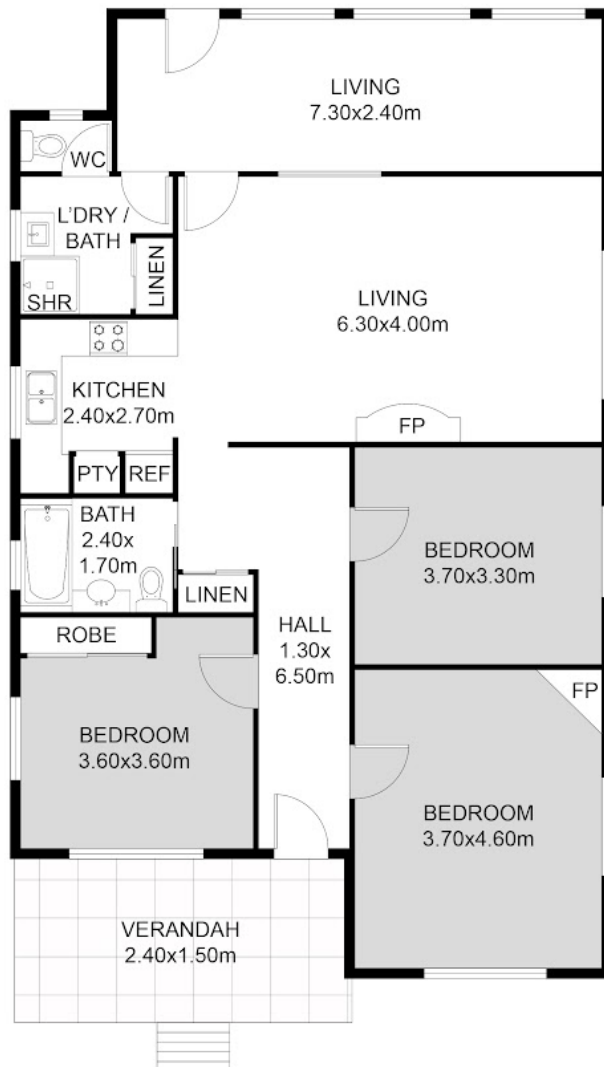
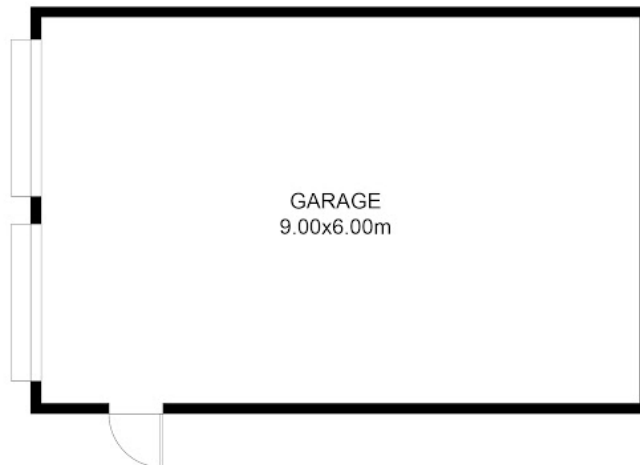
3 BED | 2 BATH | 2 CAR

PRICE:
\$510,000

OPEN FOR INSPECTION:
N/A



Deneille Plowman
0488696563
dee@atrealty.com.au
www.atrealty.com.au



FLOOR PLAN

Disclaimer: Please note this floor plan is for marketing purposes and is to be used as a guide only. All dimensions are estimates only and may not be exact measurements.

This floor plan including furniture, fixture measurements and dimensions are approximate and for illustrative purposes only.
@Realty gives no guarantee, warranty or representation as to the accuracy and layout.
All enquiries must be directed to the agent, vendor or party representing this floor plan.