

22 CLAREVILLE CLOSE, WOODBINE, NSW, 2560



SOLD

GRAND FAMILY HOME ON 901SQM BLOCK OF LAND WITH GRANNY FLAT

This much loved family home is remarkable on a grand scale, elevated on a large parcel of land and surrounded by magnificent views of the district, it is timelessly elegant and contains a wealth of charm and sophistication. Having only ever had one family, it has been a home filled with love & many memories.

The multiple living areas have been cleverly designed to make any guest immediately feel at home. Space is in abundance and will accommodate the growing family.

The kitchen is stunning, besides having plenty of space to move around in, there are quality features and modern inclusions that will leave you feeling envious.

The accommodation of this home includes four generous sized bedrooms upstairs all with built in robes and a balcony off the master room and two well proportioned bedrooms in the granny flat directly downstairs, having it's own living areas, separate space to install a kitchenette and it's own entry way from outside makes it perfect for inlaw accommodation, teenagers retreat or extra income.

These rooms are serviced by four brilliantly designed bathrooms, one being the ensuite to the master, you will find the second one in the granny flat, the third cleverly tucked away in the laundry and the last being the main bathroom which is a fantastic feature on it's own.

Moving outside will leave you amazed, the low maintenance backyard is a dream and the paved half enclosed undercover entertaining area has been built for the entertainer which means rain, hail or shine the party will go on!

Extra features include a double lock up garage with internal access, Under house storage, a cleverly designed workshed or man cave adjoining the garage, a huge verandah to the front of the home, dishwasher and air conditioning for all year round comfort all on a huge 901sqm parcel of land.

This magnificent family home is complimented by it's superb setting, sitting proudly in the family friendly suburb of Woodbine, it is conveniently located only a short distance to local shops, local

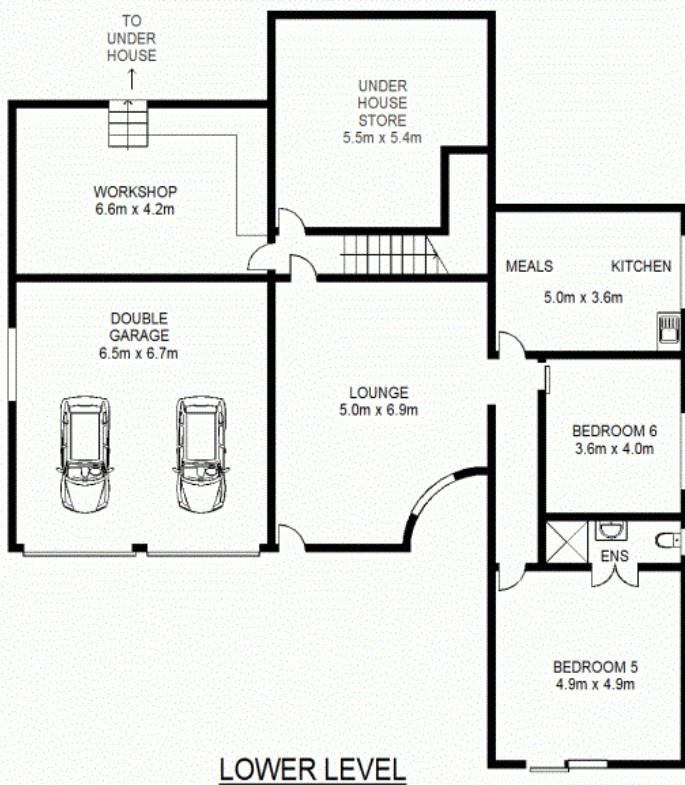
6 BED | 4 BATH | 2 CAR

PRICE:
\$1,220,000

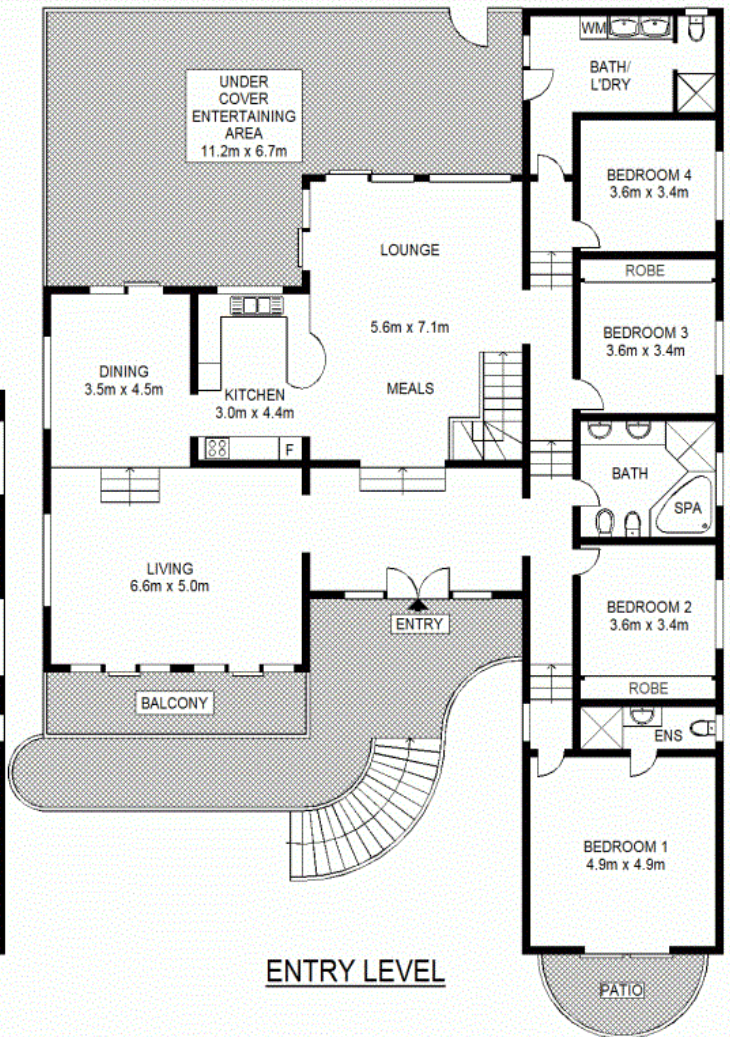
OPEN FOR INSPECTION:
N/A



Huss Al Salemi
0411699419
huss@atrealty.com.au
www.agencycentral.com.au



LOWER LEVEL



ENTRY LEVEL



Disclaimer: Please note this floor plan is for marketing purposes and is to be used as a guide only. All dimensions are estimates only and may not be exact measurements.

floor plans, interested parties should rely on their own enquiries. Floor Plans by Indus Media | indusmedia.tv

22 Claireville Close, Woodbine

Huss Al Salemi

0411699419

huss@atrealty.com.au

www.agencycentral.com.au

