



**PRECINCT**  
REALTORS



# SOLD

## MASSIVE SHED, POOL, POTENTIAL DUAL LIVING!!

This stunning 2 acre property is perfectly located in the sought after suburb of Elimbah and comes with all the bells and whistle just 7 minutes to NEW BUNNINGS, McDonalds, shopping, and highway access.

Boasting Cathedral timber ceilings and open living this home invites you in and takes your breath away. Comfortable and stylish the home itself has 3x good sized bedrooms plus an office or 4th bedroom with 2 modern bathrooms. The open plan layout draws you onto the back patio overlooking HUGE inground pool with massive Bali hut perfect for relaxing and entertaining all throughout summer. Take a wonder to the near by shed perfectly set up for teenage retreat or potential dual living with kitchen, bathroom, HUGE lounge area and 3 offices/utility rooms, and if all that isn't enough the home also boast dual access to a MASSIVE 3x bay extended height shed and workshop bay with 3 phase power already installed!!

### Features:

- 6.6KW solae system with inverter
- 18x10m Shed with 18x10m Concrete slab out front
- Shed council approved for extra Height!!
- 3 x Good sized bedrooms with ceiling fans and robes
- 4th bedroom or office
- Open plan kitchen living and dining
- Aircon and ceiling fans throughout
- Stunning timber cathedral ceiling
- Modernised kitchen with stone benchtops
- Renovated main bathroom with bath
- Modern ensuite with loads of room
- HUGE back patio leading onto pool area
- MASSIVE inground pool with Oversized Bali hut
- HUGE built in shed with 3 utility rooms, bathroom, kitchen, and rumpus!
- MASSIVE industrial style shed with 3 oversized bays and workshop
- 3 Phase powder and HUGE concrete pad to shed as well as separate access
- 3 different entry point of the road

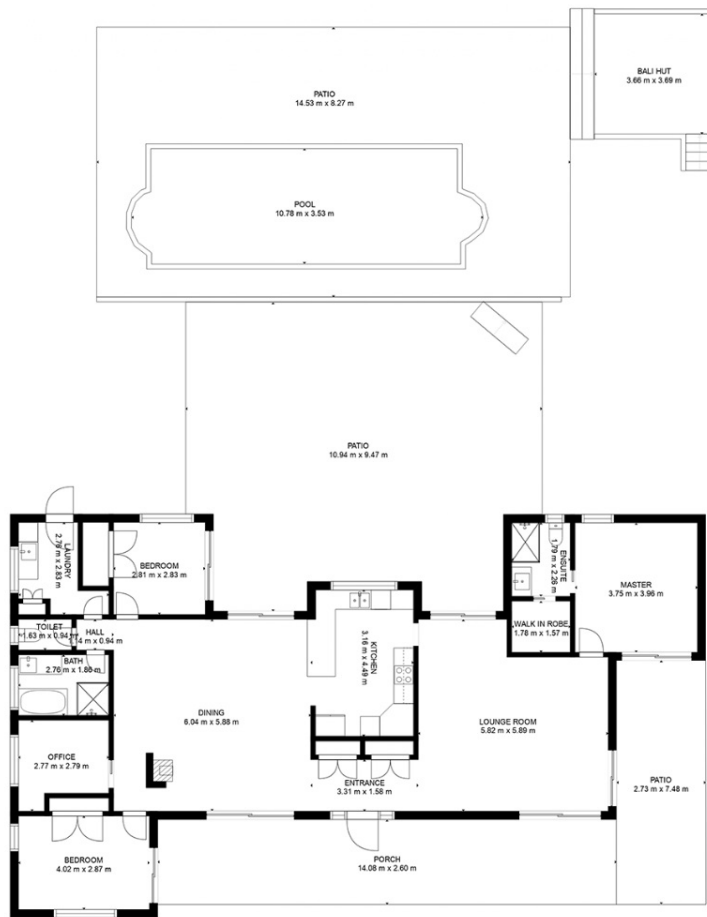
4 BED | 3 BATH | 6 CAR

PRICE:  
\$1,260,000

OPEN FOR INSPECTION:  
N/A



**Paige Crendon**  
**0413402110**  
Crendonpropertygroup@gmail.com  
[www.atrealty.com.au](http://www.atrealty.com.au)



GROSS INTERNAL AREA  
 FLOOR 1: 207 m<sup>2</sup>, FLOOR 2: 95 m<sup>2</sup>  
 EXCLUDED AREAS: , PATIO: 235 m<sup>2</sup>  
 PORCH: 51 m<sup>2</sup>  
 TOTAL: 302 m<sup>2</sup>  
 SIZES AND DIMENSIONS ARE APPROXIMATE, ACTUAL MAY VARY.

Disclaimer: Please note this floor plan is for marketing purposes and is to be used as a guide only. All dimensions are estimates only and may not be exact measurements.