



## FOR SALE

### CALLING FIRST HOME BUYERS OR INVESTORS!

Perfectly positioned in a quiet cul-de-sac and neighborhood, is this low maintenance open plan brick veneer home with lovely views of the Blackall Ranges. You will have your very own natural parkland backdrop for privacy, or a playground for the kids. Plenty of room for that extra car, boat or campervan. Low maintenance home both inside and out.

The covered outdoor alfresco entertaining area facing northeast can be enjoyed all year round and flows with ease from the modern kitchen and large open plan dining and lounge.

With three bedrooms, a bathroom, air conditioning and just a short stroll to Nambour CBD, shops and schools, this home could be just what you are looking for.

Enjoy views of the mountains and city views from the front verandah and peace and tranquility at the back patio with your own lush rainforest setting.

Nambour is in the heart of the Sunshine Coast. It is the gateway to the Sunshine Coast hinterland and is emerging as Sunshine Coast's attractive growth area.

At a glance:

- 3 Bed 1 Bath on a large block of 1041m<sup>2</sup>
- Undercover BBQ / Entertainment area
- Single lock up garage
- Spacious Lounge
- Split System Air Con
- Currently tenanted - tenant would like to stay on.
- Side Access for Trailer or Boat
- Walking distance to Nambour Township

### 3 BED | 1 BATH | 2 CAR

PRICE:

Offers Over \$549,000

OPEN FOR INSPECTION:

N/A

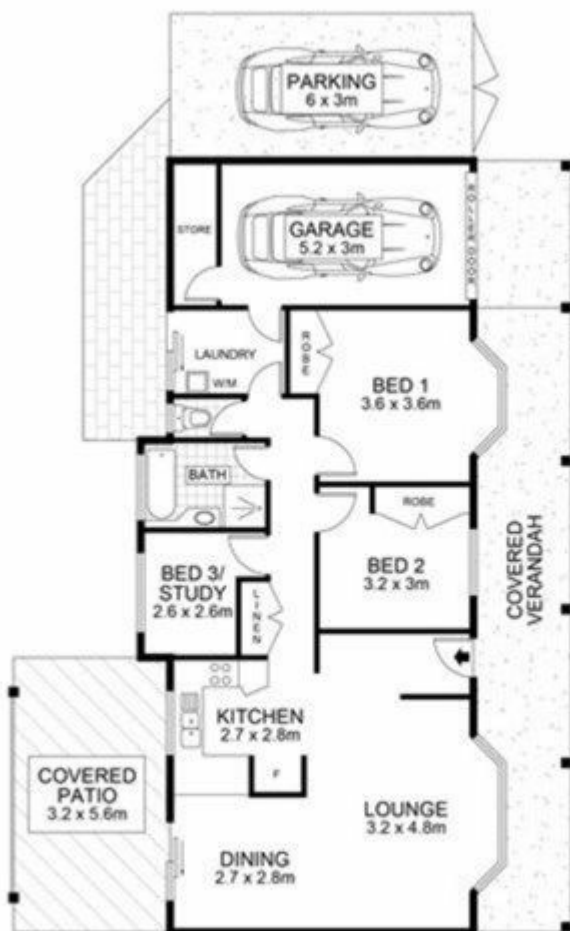


**Tony Bennett**

**0424855224**

[tonybennett@bennettandcorealty.com.au](mailto:tonybennett@bennettandcorealty.com.au)

[bennettandcorealty.com.au](http://bennettandcorealty.com.au)



12 MCKAY STREET

NAMBOUR

INTERNAL AREA - 90 SQM  
GARAGE AREA - 34 SQM  
EXTERNAL AREA - 49 SQM  
TOTAL AREA - 173 SQM

This floor plan is conceptual only. It is provided for illustrative purposes only and should not be relied upon. We make no guarantee as to the accuracy of this plan. All interested parties should make and rely on their own enquiries in determining the accuracy of the information contained in this floor plan.

Disclaimer: Please note this floor plan is for marketing purposes and is to be used as a guide only. All dimensions are estimates only and may not be exact measurements.