

# SOLD

## BRICK, LOCATION AND READY TO MOVE IN....

This beautifully presented 3 bedroom brick home on a 1002m2 block is the one you have been waiting for. The town of Pittsworth is situated in the heart of the Darling Downs in a rural community, surrounded by various agricultural industries, including grain, cotton, cattle and dairy farms. It is approximately 40km west of Toowoomba, with a daily bus run that travels to schools and shopping centres. The town is within a 2-3 hour scenic drive to Brisbane, the Sunshine Coast and the Gold Coast.

This modern and well-maintained home offers three bedrooms, with the main bedroom situated at the front with built-in cupboards, an ensuite, a walk-in robe, ceiling fans and a reverse cycle air conditioner. The other two bedrooms are on the opposite side of the house, with built-in robes, ceiling fans and a reverse-cycle air conditioner. There is a sunken lounge room with a reverse cycle air conditioner, a gas heater and two brick feature walls. The main bathroom has ample room with a separate shower and bathtub. The kitchen will not disappoint with plenty of cupboards and bench space, a servery with a bench that faces the dining room, a dishwasher, an electric cooktop and an oven. As you step outside, there is a pergola area for entertaining with drop-down blinds and a built-in brick barbecue. An open garage is adjoining the house with space for two cars and a cement driveway. This home has established gardens with plenty of trees, ample opportunity to add your touch and a lock-up garden shed in the backyard.

Property Features include:

- . Water tanks
- . Garden shed
- . Fully-screened
- . Venetian blinds
- . Cement driveway
- . Electric Cooktop and Oven
- . Spacious kitchen with dishwasher
- . 5 x Reverse Cycle Air Conditioners
- . Main bedroom with ensuite and walk-in robe

This home is ready to be lived in with no work. If you are looking for a modern brick home or an excellent low-maintenance investment property, don't hesitate to call Robert Cox at 0422 841 777 for a personal inspection, as this property will not last long.

3 BED | 2 BATH | 2 CAR

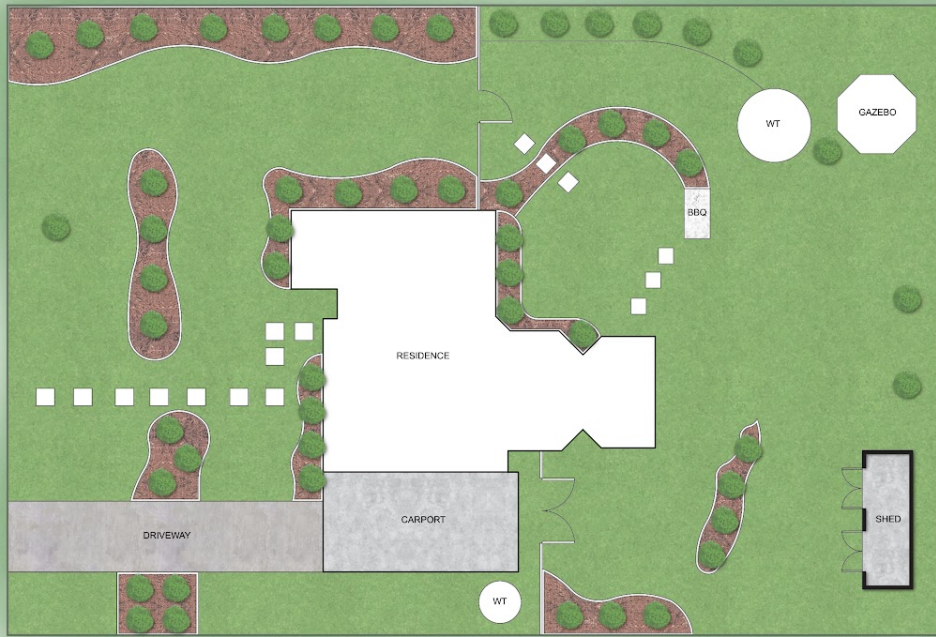
PRICE:  
\$430,000

OPEN FOR INSPECTION:  
N/A



**Robert Cox**  
**0422841777**

robertcox@atrealty.com.au  
Tyme Real Estate



**SITE PLAN**



**FLOOR PLAN**

This floor plan including furniture, fixture measurements and dimensions are approximate and for illustrative purposes only. BoxBrownie.com gives no guarantee, warranty or representation as to the accuracy and layout. All enquiries must be directed to the agent, vendor or party representing this floor plan.

**Total Areas**  
Total Floor Area: 331 Sqm  
Total Area: 981 Sqm

**16-18 Beresford Street, Pittsworth**

Disclaimer: Please note this floor plan is for marketing purposes and is to be used as a guide only. All dimensions are estimates only and may not be exact measurements.