



SOLD

BRAND NEW ARCHITECTURALLY DESIGNED HOME - READY TO MOVE INTO!

Brand new home - Individual design - centrally located in popular Geilston Bay - Low maintenance living at its best!
Recently completed by South East Building - HIA award winning builders for exceptional craftsmanship.
Surrounded by new homes, this impeccably built home is one of two on an 805m2 strata offering above average land size.
Offering level access, 3 bedrooms, master with walk in robe and generous ensuite, an internally accessed garage, sunny north facing timber sundeck and well landscaped gardens this home promises to impress.
The strata of two is a "non-active" strata with no active body corporate or fees.
The home has been constructed with an emphasis on detail and customised design. Double glazed windows throughout, stunning kitchen with stone benchtops and matt black tap ware and fittings, roomy ensuite with double basin and quality flooring throughout.
Cost effective LED lights feature throughout the living areas and heating costs will be minimal with insulated ceilings, walls and double glazed windows working in unison with the inverter heatpump to provide a comfortable environment year around at minimal cost.

- Brand New Home
- Individual Design
- Double glazed windows throughout
- Level access
- LED Lighting
- Low Maintenance living
- Garage +1 off street park
- 6.9 Star energy rating

Quality custom built homes are hard to come by, please contact Ben Palmer using the links on this page for any further information or to arrange an inspection.

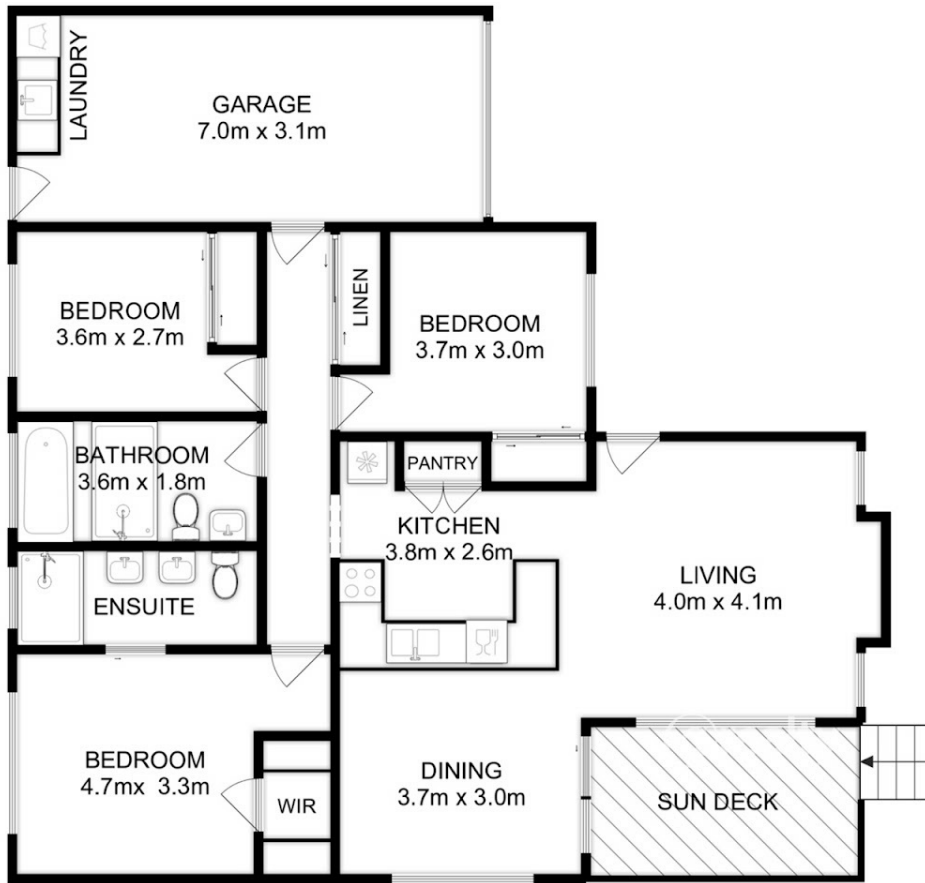
3 BED | 2 BATH | 1 CAR

PRICE:
\$650,000

OPEN FOR INSPECTION:
N/A



Ben Palmer
0417556731
benpalmer@atrealty.com.au
hobarthomes.com.au



Total Approx. Floor Area (inc. Garage) : 130 sqm

All measurements are internal and approximate.
This plan is a sketch for illustration, not valuation.
Produced by Open2view.com

Disclaimer: Please note this floor plan is for marketing purposes and is to be used as a guide only. All dimensions are estimates only and may not be exact measurements.