

FOR SALE

UNRIVALLED FAMILY LUXURY

SOLD AGAIN IN 1 HOME OPEN BY NANCY BIRD @realty !

Please contact Nancy Bird on 041 555 8594 anytime for any further information or to book your free appraisal today

Nancy Bird is proud to present this stunning, 5-bedroom residence, boasting state-of-the-art appointments, indulgent finishes and picturesque lake views that define the contemporary splendour. Custom built to the highest standard by Don Russell Homes, the inspired spacious approximately 350 sqm building layout, represents the creation of a sublime balance between life, work and leisure in an impeccable home environment, all situated in a prime location on a generous 642 sqm corner block surrounded by two stunning lakes with unrivalled breath taking views .

With its display home presentation, the property showcases only the best finishes, with high ceilings and spotted gum hardwood timber flooring throughout, flowing through five spacious bedrooms and two bathrooms, including a gorgeous double King sized master suite featuring a built-in dressing area with custom built dressing table, chest of draws and wardrobe fixtures and fittings, lavish Ensuite, complete with an indulgent wet room, luxury spa bath tub, shower, separate toilet and endless vanity bench top.

Moreover, there are numerous living areas to match any and all lifestyle needs, including a light-filled open-plan family area, a separate theatre room, an upstairs sitting room and two inspiring outdoor areas, including an expansive covered balcony, both offering the most magnificent lakeside views. And for the master chef at heart, the striking kitchen with a brand new induction stove top and range hood, under bench oven, stone benchtops, and a walk-in pantry offers plenty of space and every requirement to entertain guests whilst you cook up a storm.

There is secure garage parking for two plus storage, a large laundry, a vast wine cellar/storage room, a Tesla Battery you can use for your electric car as well as electricity power back up for the house, zoned and ducted reverse-cycle air conditioning, a massive 28 solar panel system to save thousands on your regular Electricity bills, powered workshop with a spacious under cover work area, an array of fruit trees, including mango, fig, banana and citrus, and a designated vegetable garden, bore reticulation and a stunning ornamental Koi fish pond

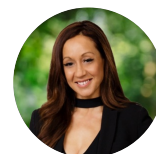
5 BED | 2 BATH | 2 CAR

PRICE:

SOLD IN 1 HOME OPEN AGAIN BY NANCY BIRD @realty

OPEN FOR INSPECTION:

N/A



Nancy Bird
0415558594

nancybird@atrealty.com.au

www.atrealty.com.au



42 Freycinet Circuit, Aubin Grove

AREAS	
GROUND	168.55m ²
GARAGE	37.72m ²
PORCH	2.98m ²
ALFRESCO	18.69m ²
UPPER	101.18m ²
BALCONY	18.69m ²
TOTAL	347.82m²



PLAN IS APPROXIMATE AND REPRESENTATIONAL ONLY

TATU/FLOORPLANS.COM.AU

Disclaimer: Please note this floor plan is for marketing purposes and is to be used as a guide only. All dimensions are estimates only and may not be exact measurements.