



# FOR SALE

## THE ESTATE ON THE PALMS

Sanctuary Cove is a gated community you will need to arrange access prior to gaining access to the estate. Please contact David Druce on 0414 404 050

The owner of this stunning property wants it sold!

This superbly appointed single level home features three generously sized bedrooms, separate media room, gourmet kitchen with stone bench tops and a secure double car garage with golf buggy space. Ideally configured for family living, this luxury home incorporates impressively large ceiling spaces and impeccable interior design and finishes.

- \* Direct golf frontage overlooking The Palms championship golf course
- \* Three generous bedrooms
- \* Media room
- \* Master bedroom with ensuite featuring a free-standing bath and walk-in robe
- \* Covered rear patio with natural gas point
- \* Fully ducted air-conditioning
- \* Streamlined, gourmet kitchen fitted with the best of Miele appliances
- \* Double garage with golf buggy space
- \* Premier location within the secure, gated grounds of Sanctuary Cove
- \* High ceilings and expansive use of glass maximising light and views
- \* Pet friendly
- \* 24 hour security land and sea

The home enjoys an enviable position just a short buggy ride away from the Marine Village with harbourside restaurants and cafés, art galleries, fascinating shopping and village movie theatre. The exclusive Country Club is in close proximity and two premier golf courses are on your doorstep.

The famous white sand beaches and glittering surrounds of the Gold Coast are only 20 minutes by car, while direct access to the M1 freeway puts the culture and commerce of Brisbane, Queensland's capital, and its major airports just 40 minutes away.

This stunning home will not be available for long. Contact us today to secure a relaxing lifestyle at Sanctuary Cove Resort.

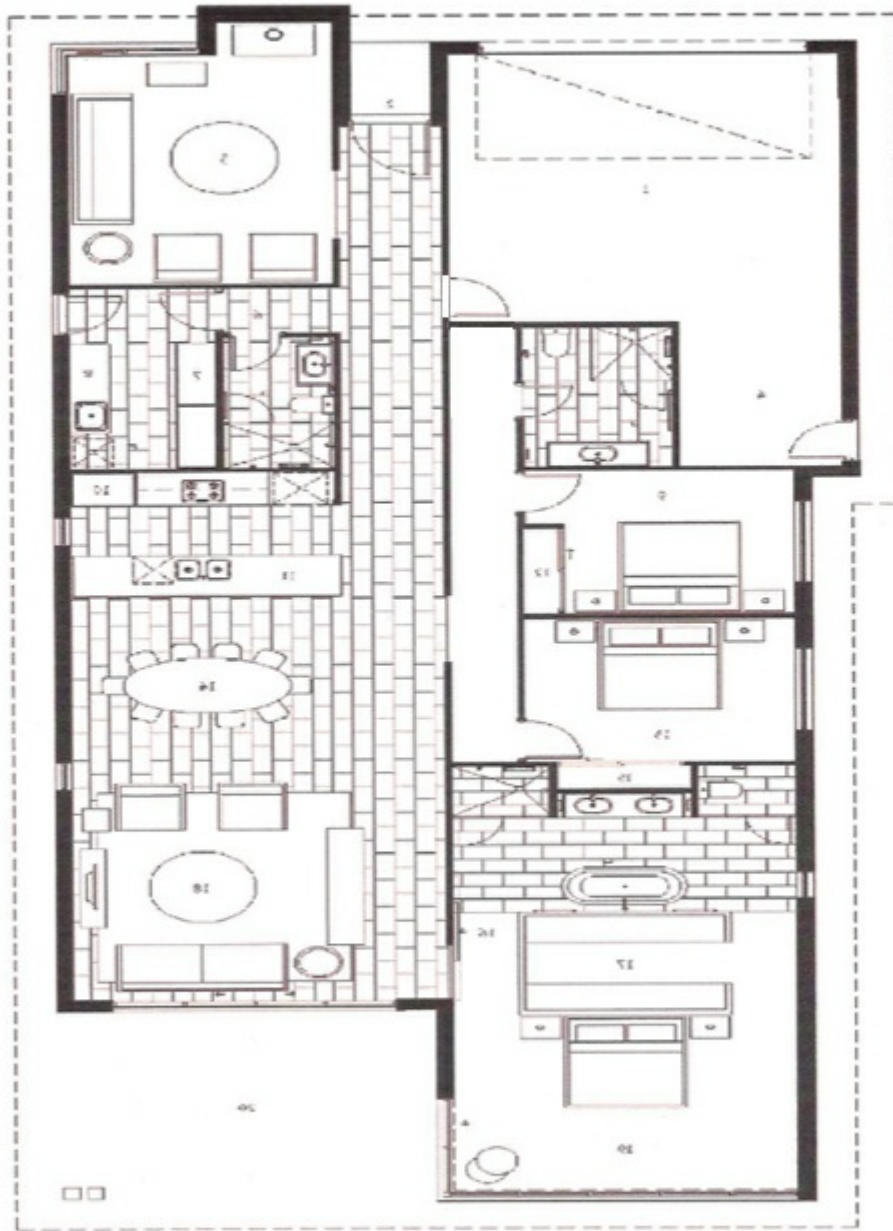
**3 BED | 3 BATH | 2 CAR**

**PRICE:**  
\$1,249,000

**OPEN FOR INSPECTION:**  
N/A



**David Druce**  
**0414404050**  
druce@atrealty.com.au  
[www.atrealty.com.au](http://www.atrealty.com.au)



David Druce | 0414 404 050 | druce@atrealty.com.au | www.druce.com.au

Disclaimer: Please note this floor plan is for marketing purposes and is to be used as a guide only. All dimensions are estimates only and may not be exact measurements.