




8 INGLETON COURT, NARRE WARREN,
VIC, 3805



FOR SALE

SUPERB FAMILY LIVING IN THE HEART OF MARAMBA!

4  | 2  | 2 

Situated in the popular Maramba Estate, located north of the highway, this is a perfect four bedroom family home or investment for the growing family.

As soon as you enter the home, you are greeted with a large entry way welcoming you into the large formal lounge perfect for winding down after a big day with the entire family. The practical and spacious floorplan showcases a well appointed kitchen is the heart of the home, with quality appliances, plenty of overhead cupboards and ample bench space, this is the perfect space for the chef of the home. Leading off the kitchen overlooking, a large separate dining or study area and living area providing open plan living at its finest.

Comprising of four bedrooms, the master with walk in robe and ensuite with a large bay window. The remaining three bedrooms with built in robes.

The fully enclosed entertainment area, is a sensational area for those who love to entertain all seasons. Head outside to the back yard you will find a garden shed, fully enclosed backyard with 2 separate outside areas, great to have somewhere for the kids and the dogs to play.


PRICE: \$720,000 - \$780,000

OPEN FOR INSPECTION: N/A .


Emily Grainger | 0421929013 | emily@grealestate.com.au | www.grealestate.com.au

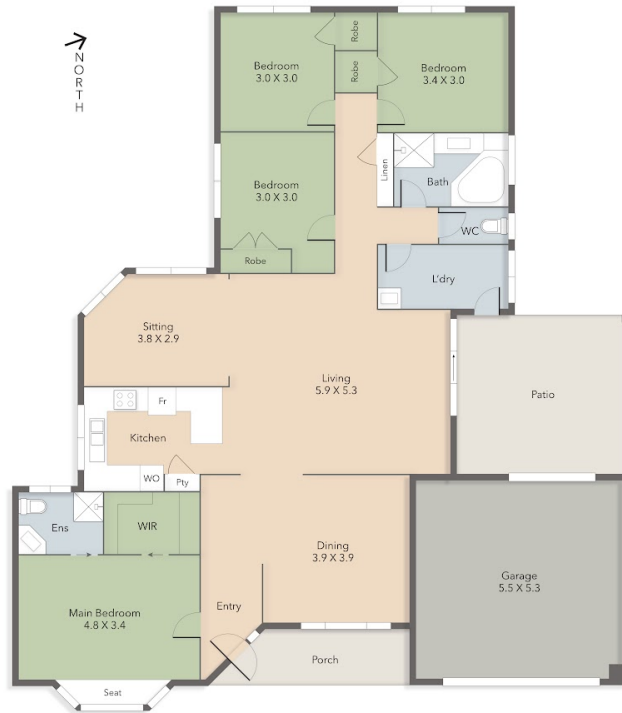
8 INGLETON COURT, NARRE WARREN, VIC, 3805

8 Ingleton Court NARRE WARREN

 4 Bedrooms

 2 Bathrooms

 2 Car Garage



Disclaimer: Whilst every effort has been made to ensure the accuracy of these particulars, no warranty is given by the vendor or the agent as to their accuracy. Interested parties should not rely on these particulars as representations of fact but must instead satisfy themselves by inspection or otherwise.

Emily Grainger | 0421929013 | emily@grealestate.com.au | www.grealestate.com.au