



**SOLD**

## OUTSTANDING VALUE, BRICK HOME WITH VIEWS!

Large Block with Private, Leafy Valley Outlook

Nestled in a private, leafy setting with sensational valley views this 857m2 property has something for everyone. The solid three bedroom, single storey, brick and tile residence is low maintenance and enjoys a fabulous sunroom addition that creates a light-filled second living space, hobby room or games room.

Open plan living, reverse cycle air-conditioning, ceiling fans, internal garage access and a separate toilet are all welcome features and make this a comfortable home to be enjoyed by owner occupiers or tenants alike.

The backyard is absolutely gorgeous and is enhanced by established citrus trees and veggie beds, terracing and a secure fenced yard of complete privacy framed by foliage. Abundant birdlife can often be seen as you relax and take in the leafy uninterrupted view across to the valley beyond. And yes, the grass really is as green as it is in the photos!

Centrally located this great property is handy to shops, schools, sports facilities and so much more and still an easy drive to the coastal delights. There is even a great kids playground just one door away if you'd prefer not to have a swing set in your backyard!

This one won't last at this price - contact exclusive selling agent, Robyn Hunt, today on 0448 448 758 to book your inspection!

\*\*\* Disclaimer: Whilst every effort has been made to ensure the accuracy of these particulars, no warranty is given by the vendor or the agent as to their accuracy. Interested parties should not rely on these particulars as representations of fact but must instead satisfy themselves by inspection or otherwise.

**3 BED | 1 BATH | 1 CAR**

**PRICE:**  
\$567,500

**OPEN FOR INSPECTION:**  
N/A

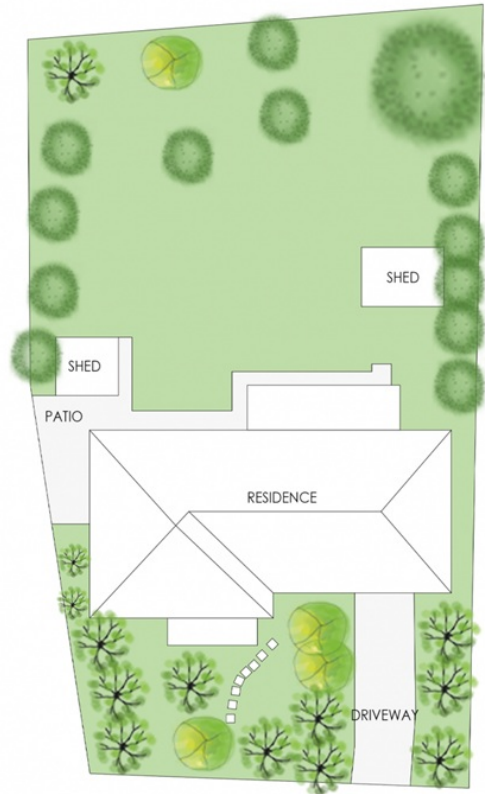
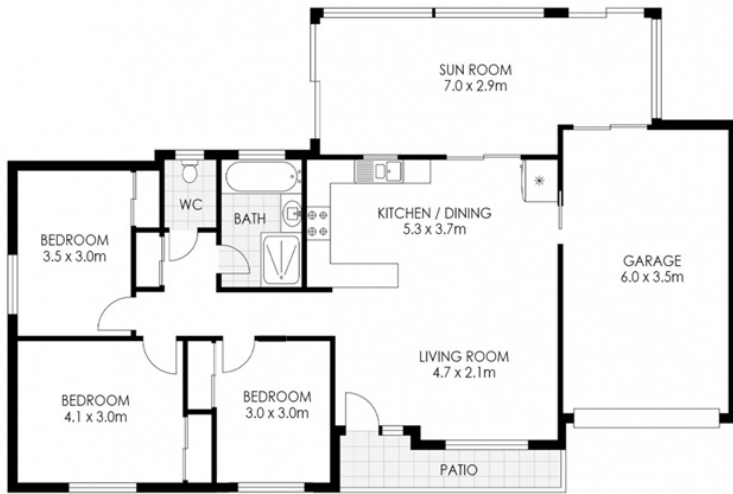
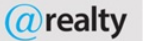


**Robyn Hunt**  
**0448448758**  
robyn@atrealty.com.au  
[www.atrealty.com.au](http://www.atrealty.com.au)

66 Fischer Street, Goonellabah



APPROXIMATE  
AREAS  
INTERNAL: 109m<sup>2</sup>  
EXTERNAL: 4m<sup>2</sup>



SITE PLAN NOT TO SCALE

Disclaimer: Please note this floor plan is for marketing purposes and is to be used as a guide only. All dimensions are estimates only and may not be exact measurements.