

SOLD

HUGE 1290M2 LOT SIZE, ELEVATED HOUSE, SPA & HUGE SHED!!!

This renovated 3 bedroom, 1 bathroom elevated house is has beautiful timber floors & a renovated bathroom but if you have been also looking for a great sized block then this one has that!. A fully fenced in ground spa, the a huge 54m2 shed overlooking parkland. Full high level perimeter fencing great for keeping pets inside. There are 2 balconies and plenty of high clearance under the house. Excellent for building in that extra bathroom or bedroom. Lots of shade under the house perfect for the kids to play. Watch the amazing sunsets on the rear verandah and entertain with a BBQ and friends.

Features Include:

- 3 bedrooms, 1 bathroom elevated home
- 2 balconies, front and rear
- beautiful timber floorboards throughout
- All bedrooms with built in robes & air conditioning
- A renovated Bathroom
- Kitchen with gas cook top
- Split system air conditioning in living area
- Sensational 54m2 shed hidden in rear corner
- Double gates to rear parkland
- huge 1,290m2 block
- fully fenced in ground spa
- Under cover for 2 cars
- Space for a boat, trailer or caravan

Palmerston Council Rates : Approx \$1865 per year

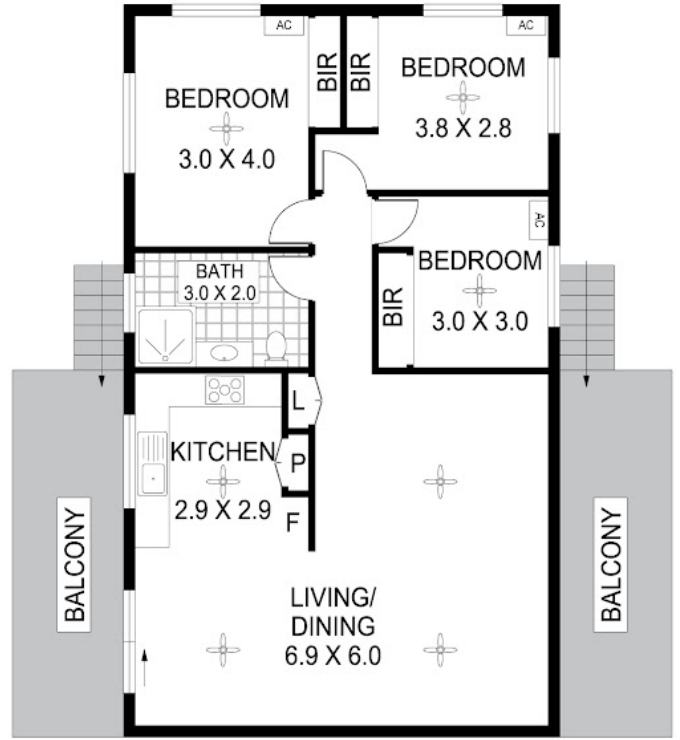
3 BED | 1 BATH | 2 CAR

PRICE:
\$540,000

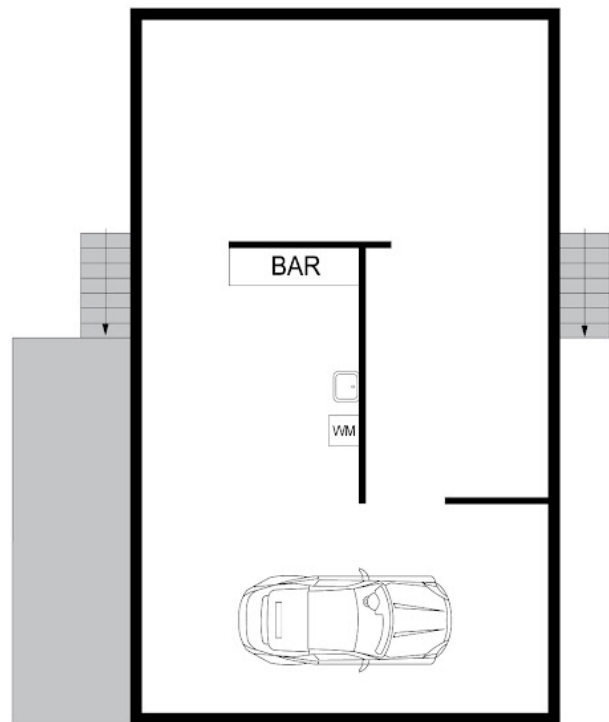
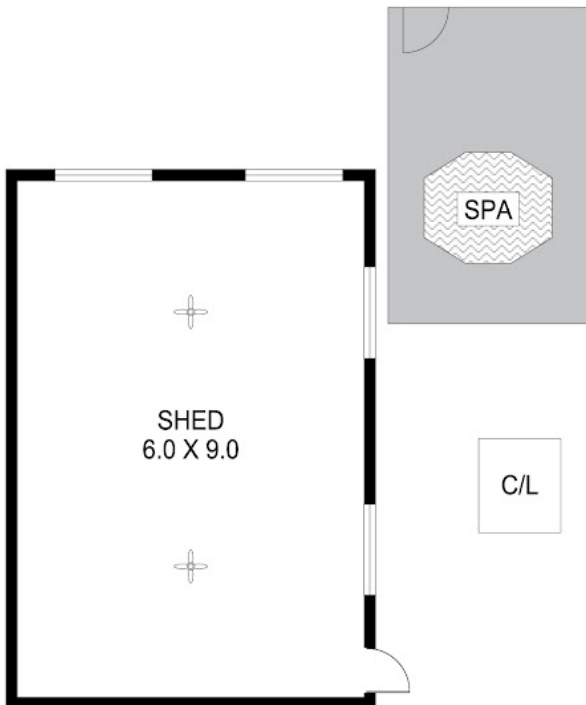
OPEN FOR INSPECTION:
N/A



Nicole Wheeler
0417508800
nicolewheeler@atrealty.com.au
www.atrealty.com.au



FIRST FLOOR



GROUND FLOOR

Disclaimer: Please note this floor plan is for marketing purposes and is to be used as a guide only. All dimensions are estimates only and may not be exact measurements.

Scale in metres. Indicative only. Dimensions are approximate. All information contained herein is gathered from sources we believe to be reliable. However we cannot guarantee its accuracy and interested persons should rely on their own enquiries

26 Fletcher Circuit Driver NT 0830

0417508800

nicolewheeler@atrealty.com.au

www.atrealty.com.au

