

SOLD

ANOTHER ONE SOLD BY JOCELYN MARRIAN THE FIRST OPEN HOME!

This Large family friendly Duplex offers 4 generous sized Bedroom, 2.5 bathrooms with superb finishes and a real touch of class, awaits your inspection. The luxury home is an entertainer's delight with open plan living areas throughout. A fresh, modern design home is only a few years old and ready to move in with nothing to be done, situated on a corner block.

Features:

- * Generous master bedroom with walk in robe and stylish en-suite with twin basins.
- * 3 other spacious bedrooms with built in wardrobes.
- * Contemporary modern kitchen with stone bench tops, 3 seater breakfast bar, 900mm stainless-steel gas cooking and walk in pantry with plenty of storage.
- * Bright neutral interiors with spacious layout includes open plan kitchen, dining and living room that overlooks the outdoor entertaining alfresco area.
- * Ultra-Modern bathrooms, main upstairs, en-suite to master and powder room down stairs.
- * Great-sized internal laundry accessing the private court yard with large clothes line, water tank and grey water system.
- * Linen storage upstairs and downstairs with extra storage in the garage.
- * 2 zoned Ducted air conditioning.
- * Alfresco and low maintenance yard for outdoor entertainment.
- * Double remote-control lock-up garage with internal access and extra storage space.
- * Water tank, grey water system, solar for main power for the environmentally conscience and savvy buyer looking to lower your everyday living costs.
- * internet and phone lines, external power and Gas points.
- * Close to all Amenities:
local primary school 2.5km away, 200m to the Bus stop with the 783 bus route.

Call Jocelyn Marrian today on; 040 516 4446 to discuss this Large Family Home further and to arrange for an inspection.

Disclaimer: We have been furnished with the above information, however, @realty gives no guarantees or undertakings concerning the accuracy, completeness or up-to-date nature of the information provided. All interested parties are responsible for their own enquiries.

Note: All boundary lines shown are indicative only.

4 BED | 3 BATH | 2 CAR

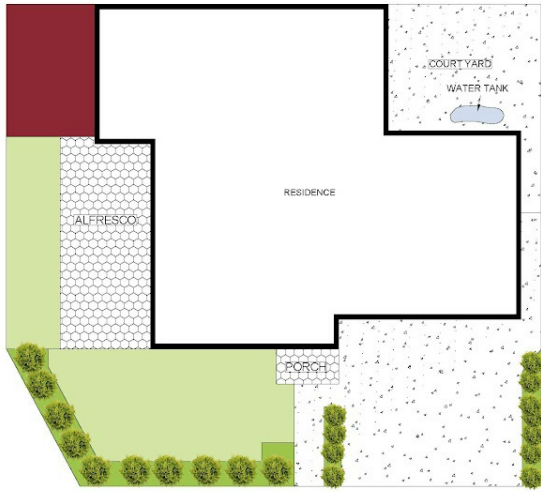
PRICE:
\$870,000

OPEN FOR INSPECTION:
N/A

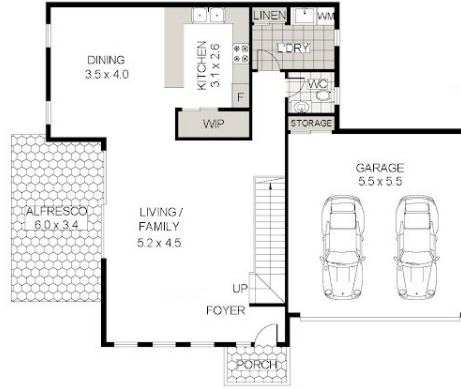


Jocelyn Marrian
0405164446

jocelynmarran@atrealty.com.au
Jocelyn Realty



SITE PLAN



GROUND FLOOR



FIRST FLOOR



15 ASHGROVE CLOSE, JORDAN SPRINGS



Disclaimer - This plan has been drafted from supplied information and is provided as an indicative representation only. No liability is accepted by the agency or the vendor on its accuracy. Interested parties should make their own enquiries. Not to scale.

Disclaimer: Please note this floor plan is for marketing purposes and is to be used as a guide only. All dimensions are estimates only and may not be exact measurements.