



## FOR LEASE

### FAMILY HOME! OPEN CANCELLED

With 4 bedrooms and 2 bathrooms and 2 car garage

Upon first look, the front of the property boasts neat landscaping and a long driveway leading up to the double garage. Once inside, the master suite is immediate to the left and features a spacious bedroom accompanied by a practical walk-in robe and a 3-piece ensuite.

Further in, you will find the spacious open-plan living, dining and kitchen area. The U-shaped kitchen is well-equipped with plenty of storage space in its cabinets and a peninsular island.

Easy-to-clean tiles and air-conditioning features in this space, and there are glass sliding doors that open up to the alfresco area. Here you will find plenty of space for entertaining and dining outdoors while enjoying the fresh air and low-maintenance gardens.

Back inside, the 3 secondary bedrooms each have built-in wardrobes and they are serviced by the main bathroom and separate WC.

Other attractive features include a storage shed, water tank and a linen cupboard in the main hall.

Situated amongst plenty of beautiful parks and nature reserves, this property is also located just a short drive from the centenary highway which will connect you to Brisbane CBD in just over half an hour. Closer to home, Orion Springfield Central is only 8 minutes away for all of your shopping needs.

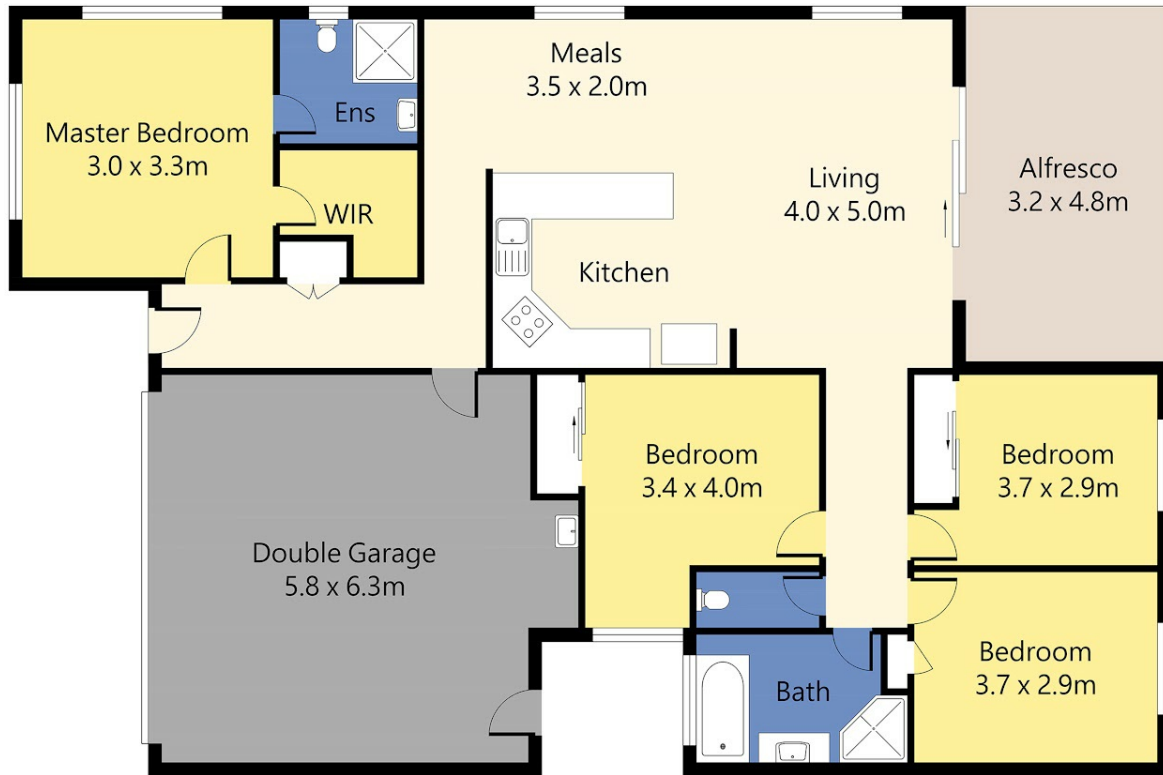
4 BED | 2 BATH | 2 CAR

PRICE:  
\$550 per week

OPEN FOR INSPECTION:  
N/A



**Mark Perera**  
**0417199875**  
markperera@atrealty.com.au  
[www.atrealty.com.au](http://www.atrealty.com.au)



Floor plan is for illustrative purposes only, subject to variations and not to exact scale.  
 Areas are approximate only and are subject to change.  
 Buyers should make their own enquiries and consult the identification plan in the disclosure documents for further details. Floor Plan drawn by iPhotorealstate.



## 28 Canterbury Bells Circuit, Springfield Lakes

Disclaimer: Please note this floor plan is for marketing purposes and is to be used as a guide only. All dimensions are estimates only and may not be exact measurements.