



SOLD

POSITION PERFECT RENOVATE, REBUILD OR DEVELOP.

INSPECTION BY APPOINTMENT - Contact Agent to book.

Located in the growing suburb of Cardiff. This 2 bedroom brick home offers ample opportunity. Set on a flat 698m² flat parcel of land with two street frontages. Close to shops, parks, sports grounds and transport.

The home has a neat easy flow floor plan consisting of two bedrooms both with built-ins. Separate dining room or potential 3rd bedroom. Kitchen with plenty of storage leading onto a large laundry and screened utility entertainment room at the back of the house. Plenty of room for the kids and pets to enjoy and a huge lockup garage with potential teenage retreat or work shed for the car enthusiast or gardener.

Features:

- Six minutes' drive to Cardiff Station for direct train service to Newcastle and Sydney.
- Five minutes' drive to Cardiff's many shops, services, major supermarkets, eateries and amenities, to Cardiff RSL and Wests Cardiff.
- Ten minutes' drive to Warners Bay for lakeside walks, dining and on-lake activities.
- Ten minutes' drive to Stockland Glendale Shops.
- Perfect investment project potential in a wonderfully convenient location
- Renovate to reveal full potential or rebuild to create your dream home or build 2-3 townhouses STCA.
- Level parcel with R3 zoning.
- Two bedrooms both with built-in robes.
- Freestanding single garage with integrated lockup work shed or teenage retreat.

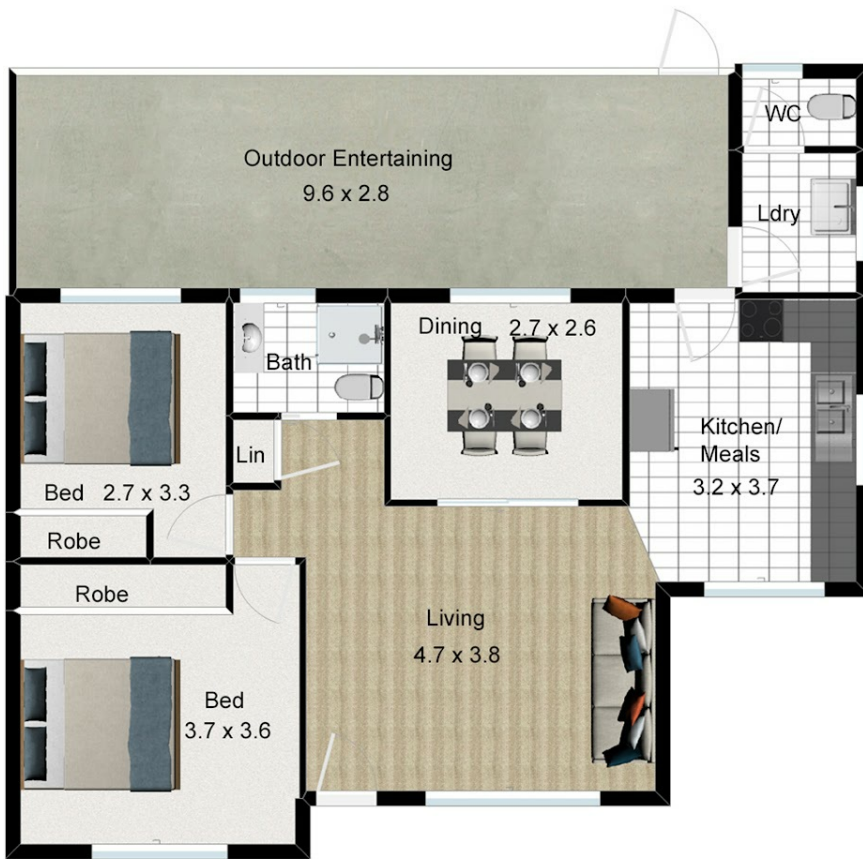
2 BED | 1 BATH | 1 CAR

PRICE:
\$650,000

OPEN FOR INSPECTION:
N/A



Vicky Lozano
0402051180
vicky@atrealty.com.au
www.atrealty.com.au



1 Cypress St Cardiff

Scale in metres. Indicative only. Dimensions are approximate. All information contained herein is gathered from sources we believe to be reliable. However we cannot guarantee its accuracy and interested persons should rely on their own enquiries

Disclaimer: Please note this floor plan is for marketing purposes and is to be used as a guide only. All dimensions are estimates only and may not be exact measurements.