



1-2 SERENITY COURT, PEARCEDALE, VIC, 3912



SOLD

WELCOME TO SERENITY!

4  | 2  | 4 

Flaunting a sophisticated contemporary design with a fusion of Hampton's inspired luxury and high-end appointments, this remarkable, newly renovated home set on a sprawling 1.65-acre (approx.) corner allotment in the idyllic Manna Gum Waters Estate overlooking the lake offers the complete lifestyle package, no matter what stage of life you're at!

Highlighted by contemporary new flooring, high ceilings and a wide entry/hallway adjoins the formal lounge and seamlessly flows on into the expansive main family-living and dining zones incorporating a gourmet kitchen with Caesarstone waterfall benchtops, Bosch appliances, integrated dishwasher, a huge butler's pantry, laundry and a separate study and/or home office.

Sleep quarters have been cleverly zoned with the master suite complemented by a chic ensuite & WIR positioned toward the front of the home, and located at the rear wing for privacy and enjoyment, consists of three remaining guest bedrooms all with mirrored BIR's, and a modern family bathroom with a large shower, stone vanity and freestanding deep bathtub.

If you enjoy entertaining, simply look no further than this remarkable entertainer's dream, as this property comes feature packed with a solar-heated swimming pool and spa with extensive covered alfresco dining/BBQ area and a brilliant servery kitchen window effortlessly

PRICE: \$2,410,000

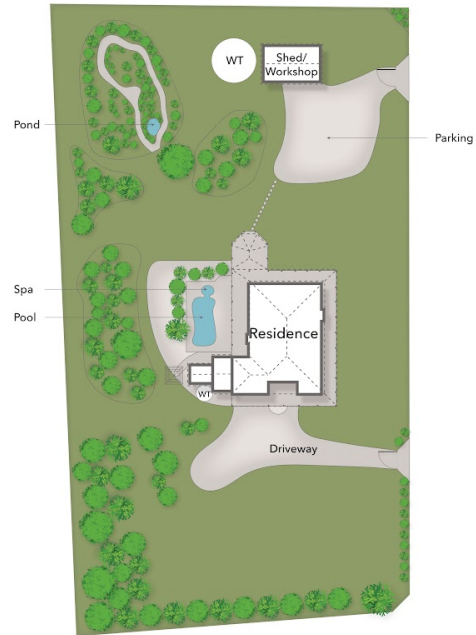
OPEN FOR INSPECTION: N/A .

Emily Grainger | 0421929013 | emily@grealestate.com.au | www.grealestate.com.au

1-2 SERENITY COURT, PEARCEDEALE, VIC, 3912

1-2 Serenity Court PEARCEDEALE

4 Bedroom 2 Bathroom 2 Car Garage + 2 Car Shed



Disclaimer: Whilst every effort has been made to ensure the accuracy of these particulars, no warranty is given by the vendor or the agent as to their accuracy. Interested parties should not rely on these particulars as representations of fact but must instead satisfy themselves by inspection or otherwise.