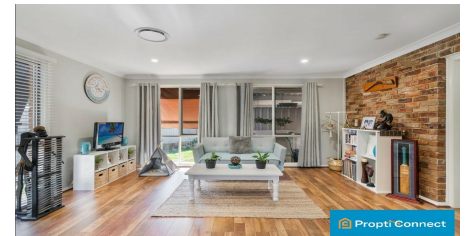


30 HINCHINBROOK DRIVE,
HINCHINBROOK



FOR LEASE

LIGHT FILLED HOME - OASIS OF REST AND RELAXATION

Flawlessly presented in a highly sought-after location, this spacious family home offers both indoor and outdoor living for all the family to enjoy. Boasting a stunning alfresco entertainer's yard with a BBQ area. This is a rare opportunity you won't want to miss out to call home.

FEATURES:

- Four generous sized bedrooms, with built in wardrobes
- Vast undercover terrace caters to all-weather entertaining
- Multiple living & dining areas, extra wide picture windows allow abundant natural light
- Chef's kitchen with quality appliances, gas cooking, dishwasher & walk in pantry
- Ducted air conditioning, security alarm system, downlights
- Carport will be installed (Garage not included)
- Wrapped in gardens featuring stunning alfresco entertainment and relaxation
- x2 Solar systems 1st 6.6kw's & 2nd 3.6 kw's - 31 solar panels

Prime location:

- Walking distance to Hinchinbrook Public School (Approx- 400m)
- Hoxton Park High School (Approx- 600m)
- The Valley Plaza, cafes, restaurants (Approx- 1500m)
- Parks and local amenities

Please contact Nayeem on 0434 970 836 for inspection

ONLINE enquiry policy -

All email & online enquiries received from this website will not be attended to if contact number & email address are not provided.

To be able to view the property we require you to register. We also encourage you to complete a T-app application prior to viewing.

4  | 2  | 1 

PRICE:
Deposit Taken



Rentals Propti Connect
0280752525

rentals@propticonnect.com.au
propticonnect.com.au